



[Go to Product page](#)

Datasheet for ABIN6138276  
**anti-CDCP1 antibody (AA 30-343)**

2 Images

Overview

Quantity:	100 µL
Target:	CDCP1
Binding Specificity:	AA 30-343
Reactivity:	Human
Host:	Rabbit
Clonality:	Polyclonal
Conjugate:	This CDCP1 antibody is un-conjugated
Application:	Western Blotting (WB)

Product Details

Immunogen:	Recombinant fusion protein containing a sequence corresponding to amino acids 30-343 of human CDCP1 (NP_835488.1).
Sequence:	FEIALPRESN ITVLIKLGTP TLLAKPCYIV ISKRHITMLS IKSGERIVFT FSCQSPENHF VIEIQKNIDC MSGPCPFGEV QLQPSTSLLP TLNRTFIWDV KAHKSIGLEL QFSIPRLRQI GPGESCPDGV THSISGRIDA TVVRIGTFCS NGTVSRIKMV EGVKMALHLP WFHPRNVSGF SIANRSSIKR LCIIESVFEG EGSATLMSAN YPEGFPEDEL MTWQFVVPAAH LRASVSFLNF NLSNCERKEE RVEYYIPGST TNPEVFKLED KQPGNMAGNF NLSLQGCDDQ AQSPGILRLQ FQVLVQHPQN ESSE
Isotype:	IgG
Cross-Reactivity:	Human, Mouse
Characteristics:	Polyclonal Antibodies
Purification:	Affinity purification

## Target Details

---

Target:	CDCP1
Alternative Name:	CDCP1 ( <a href="#">CDCP1 Products</a> )
Background:	This gene encodes a transmembrane protein which contains three extracellular CUB domains and acts as a substrate for Src family kinases. The protein plays a role in the tyrosine phosphorylation-dependent regulation of cellular events that are involved in tumor invasion and metastasis. Alternative splicing results in multiple transcript variants of this gene.,CDCP1,CD318,SIMA135,TRASK,Cancer,Tumor biomarkers,Invasion and Metastasis,Cell Biology & Developmental Biology,Extracellular Matrix,Immunology & Inflammation,CD markers,Stem Cells,Hematopoietic Progenitors,CDCP1
Molecular Weight:	37 kDa/72 kDa/92 kDa
Gene ID:	64866
UniProt:	<a href="#">Q9H5V8</a>

## Application Details

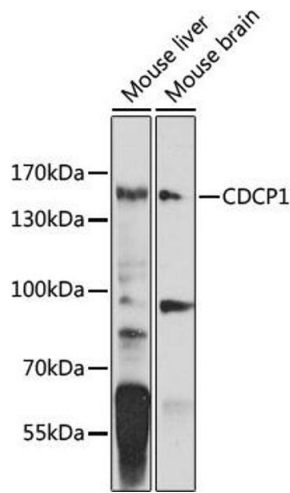
---

Application Notes:	WB,1:500 - 1:2000
Comment:	HIGH QUALITY
Restrictions:	For Research Use only

## Handling

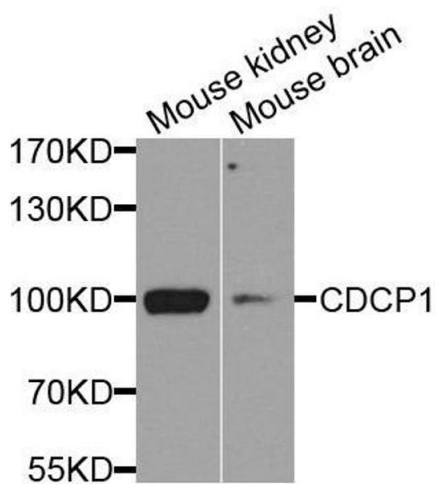
---

Format:	Liquid
Buffer:	PBS with 0.02 % sodium azide,50 % glycerol, pH 7.3.
Preservative:	Sodium azide
Precaution of Use:	This product contains Sodium azide: a POISONOUS AND HAZARDOUS SUBSTANCE which should be handled by trained staff only.
Storage:	-20 °C
Storage Comment:	Store at -20°C. Avoid freeze / thaw cycles.



### Western Blotting

**Image 1.** Western blot analysis of extracts of various cell lines, using CDCP1 antibody (ABIN6129363, ABIN6138276, ABIN6138278 and ABIN6224269) at 1:1000 dilution. Secondary antibody: HRP Goat Anti-Rabbit IgG (H+L) (ABIN1684268 and ABIN3020597) at 1:10000 dilution. Lysates/proteins: 25 µg per lane. Blocking buffer: 3 % nonfat dry milk in TBST. Detection: ECL Basic Kit (RM00020). Exposure time: 30s.



### Western Blotting

**Image 2.** Western blot analysis of extracts of various cell lines, using CDCP1 antibody.