

Datasheet for ABIN6138279
anti-E-cadherin antibody (AA 700-800)



[Go to Product page](#)

5 Images

Overview

Quantity:	100 µL
Target:	E-cadherin (CDH1)
Binding Specificity:	AA 700-800
Reactivity:	Human
Host:	Rabbit
Clonality:	Polyclonal
Conjugate:	This E-cadherin antibody is un-conjugated
Application:	Western Blotting (WB), Immunohistochemistry (IHC), Immunofluorescence (IF)

Product Details

Immunogen:	A synthetic peptide corresponding to a sequence within amino acids 700-800 of human E-Cadherin (NP_004351.1).
Sequence:	PVEAGLQIPA ILGILGGILA LLILLLLLL FLRRRAVVKE PLLPPEDDTR DNVYYYDEEG GGEEEDQDFDL SQLHRGLDAR PEVTRNDVAP TLMSVPRYLP R
Isotype:	IgG
Cross-Reactivity:	Human, Mouse, Rat
Characteristics:	Polyclonal Antibodies
Purification:	Affinity purification

Target Details

Target:	E-cadherin (CDH1)
Alternative Name:	CDH1 (CDH1 Products)
Background:	<p>This gene encodes a classical cadherin of the cadherin superfamily. Alternative splicing results in multiple transcript variants, at least one of which encodes a preproprotein that is proteolytically processed to generate the mature glycoprotein. This calcium-dependent cell-cell adhesion protein is comprised of five extracellular cadherin repeats, a transmembrane region and a highly conserved cytoplasmic tail. Mutations in this gene are correlated with gastric, breast, colorectal, thyroid and ovarian cancer. Loss of function of this gene is thought to contribute to cancer progression by increasing proliferation, invasion, and/or metastasis. The ectodomain of this protein mediates bacterial adhesion to mammalian cells and the cytoplasmic domain is required for internalization. This gene is present in a gene cluster with other members of the cadherin family on chromosome 16.,Arc-1,CD324,CDHE,ECAD,LCAM,UVO,CDH1,E-Cadherin,Cancer,Invasion and Metastasis,Signal Transduction,ErbB-HER Signaling Pathway,Cell Biology & Developmental Biology,Apoptosis,Cell Cycle,Centrosome,Cell Adhesion,Cadherins,Tight Junctions,Cytoskeleton,Wnt/β-Catenin Signaling Pathway,Immunology & Inflammation,CD markers,Neuroscience,Calcium Signaling,CDH1</p>
Molecular Weight:	90 kDa/97 kDa
Gene ID:	999
UniProt:	P12830
Pathways:	WNT Signaling , Sensory Perception of Sound , Cell-Cell Junction Organization , Tube Formation

Application Details

Application Notes:	WB,1:500 - 1:1000,IHC,1:50 - 1:200,IF,1:50 - 1:200
Comment:	HIGH QUALITY
Restrictions:	For Research Use only

Handling

Format:	Liquid
Buffer:	PBS with 0.02 % sodium azide,50 % glycerol, pH 7.3.
Preservative:	Sodium azide

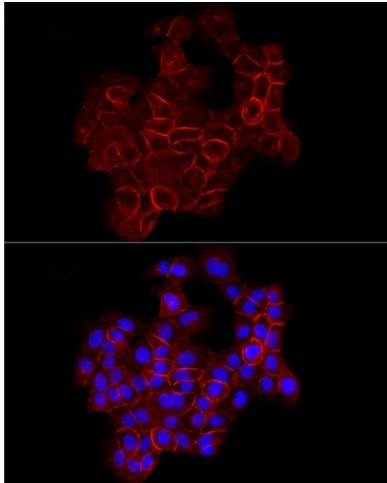
Handling

Precaution of Use: This product contains Sodium azide: a POISONOUS AND HAZARDOUS SUBSTANCE which should be handled by trained staff only.

Storage: -20 °C

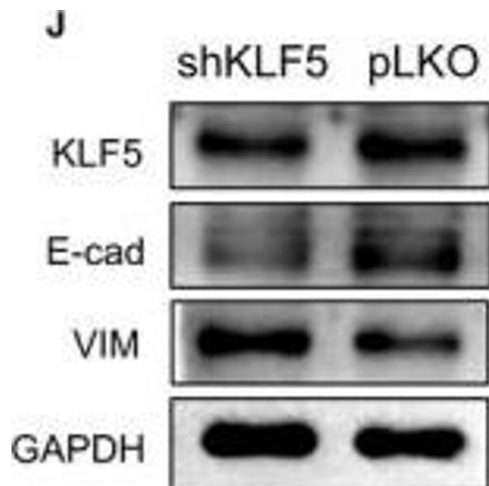
Storage Comment: Store at -20°C. Avoid freeze / thaw cycles.

Images



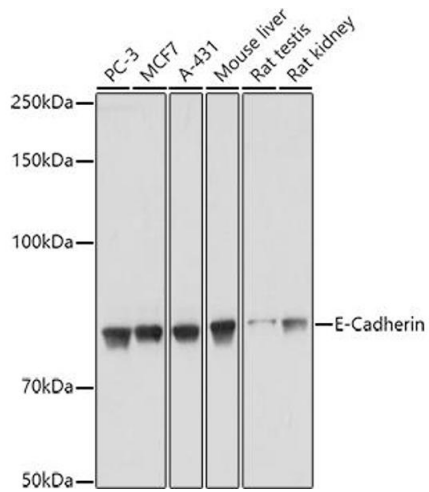
Immunofluorescence

Image 1. Immunofluorescence analysis of A-431 cells using E-Cadherin Rabbit pAb at dilution of 1:100 (40x lens). Blue: DAPI for nuclear staining.



Western Blotting

Image 2. Potential biological pathways affected by KLFs. (A) The DEGs between the KLF-F and KLF-P groups, (B) top 10 increased and decreased genes among the KLF-F and KLF-P groups. Highly expressed ARHGDI1 from the KLF-P group predicted a poor prognosis (C) and its expression was negatively associated with KLF5 (F). Highly expressed LCN2 and CD38 from the KLF-F group was linked with a favourable prognosis (D,E) and their expressions were positively associated with KLF5 (G,H). (I) The GSEA results showed that KEGG_ADHERENS_JUNCTION is activated in the KLF-P group, (J) the EMT pathway is activated after knockdown of KLF5 - figure provided by CiteAb. Source: PMID32281273



Western Blotting

Image 3. Western blot analysis of extracts of various cell lines, using E-Cadherin antibody at 1:1000 dilution. Secondary antibody: HRP Goat Anti-Rabbit IgG (H+L) (ABIN1684268 and ABIN3020597) at 1:10000 dilution. Lysates/proteins: 25 µg per lane. Blocking buffer: 3 % nonfat dry milk in TBST. Detection: ECL Basic Kit (RM00020). Exposure time: 10s.

Please check the [product details page](#) for more images. Overall 5 images are available for ABIN6138279.