

Datasheet for ABIN6138291
anti-Cadherin-16 antibody (AA 19-230)

6 Images

[Go to Product page](#)

Overview

Quantity:	100 µL
Target:	Cadherin-16 (CDH16)
Binding Specificity:	AA 19-230
Reactivity:	Human
Host:	Rabbit
Clonality:	Polyclonal
Conjugate:	This Cadherin-16 antibody is un-conjugated
Application:	Immunofluorescence (IF), Western Blotting (WB), Immunohistochemistry (IHC)

Product Details

Immunogen:	Recombinant fusion protein containing a sequence corresponding to amino acids 19-230 of human Cadherin 16 (NP_004053.1).
Sequence:	KAQPAELSVE VPENYGGNFP LYLTKLPLPR EGAEGQIVLS GDSGKATEGP FAMDPDSGFL LVTRALDREE QAEYQLQVTL EMQDGHVLWG PQPVLVHVVD ENDQVPHFSQ AIYRARLSRG TRPGIPFLFL EASDRDEPGT ANSDLRFHIL SQAPAQPSPD MFQLEPRLGA LALSPKGSTS LDHALERTYQ LLVQVKDMGD QASGHQATAT VE
Isotype:	IgG
Cross-Reactivity:	Human, Mouse, Rat
Characteristics:	Polyclonal Antibodies
Purification:	Affinity purification

Target Details

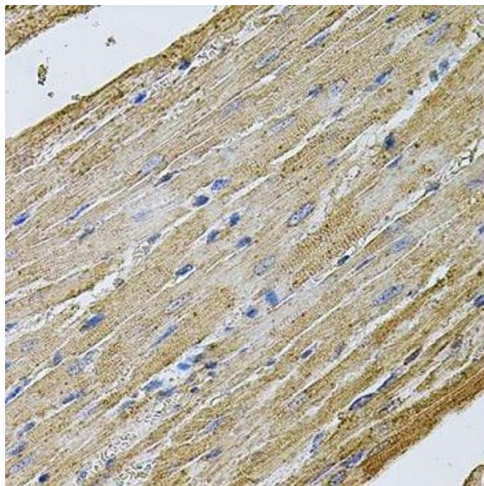
Target:	Cadherin-16 (CDH16)
Alternative Name:	CDH16 (CDH16 Products)
Background:	<p>This gene is a member of the cadherin superfamily, genes encoding calcium-dependent, membrane-associated glycoproteins. Mapped to a previously identified cluster of cadherin genes on chromosome 16q22.1, the gene localizes with superfamily members CDH1, CDH3, CDH5, CDH8 and CDH11. The protein consists of an extracellular domain containing 6 cadherin domains, a transmembrane region and a truncated cytoplasmic domain but lacks the prosequence and tripeptide HAV adhesion recognition sequence typical of most classical cadherins. Expression is exclusively in kidney, where the protein functions as the principal mediator of homotypic cellular recognition, playing a role in the morphogenic direction of tissue development. Alternatively spliced transcript variants encoding distinct isoforms have been identified.,CDH16,Signal Transduction,Cell Biology & Developmental Biology,Cell Adhesion,Cadherins,Cytoskeleton,CDH16</p>
Molecular Weight:	79 kDa/85 kDa/87 kDa/89 kDa
Gene ID:	1014
UniProt:	O75309

Application Details

Application Notes:	WB,1:500 - 1:2000,IHC,1:50 - 1:100,IF,1:50 - 1:100
Comment:	HIGH QUALITY
Restrictions:	For Research Use only

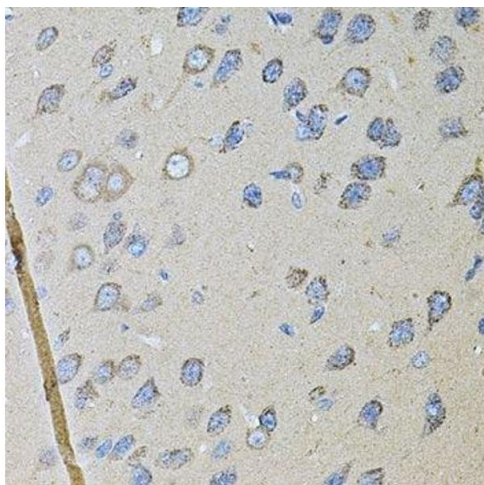
Handling

Format:	Liquid
Buffer:	PBS with 0.02 % sodium azide,50 % glycerol, pH 7.3.
Preservative:	Sodium azide
Precaution of Use:	This product contains Sodium azide: a POISONOUS AND HAZARDOUS SUBSTANCE which should be handled by trained staff only.
Storage:	-20 °C
Storage Comment:	Store at -20°C. Avoid freeze / thaw cycles.



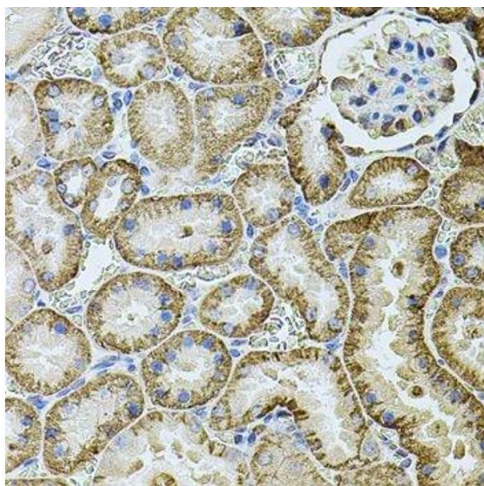
Immunohistochemistry (Paraffin-embedded Sections)

Image 1. Immunohistochemistry of paraffin-embedded rat heart using CDH16 antibody.



Immunohistochemistry (Paraffin-embedded Sections)

Image 2. Immunohistochemistry of paraffin-embedded rat brain using CDH16 antibody.



Immunohistochemistry (Paraffin-embedded Sections)

Image 3. Immunohistochemistry of paraffin-embedded rat kidney using CDH16 antibody.

Please check the [product details page](#) for more images. Overall 6 images are available for ABIN6138291.