

Datasheet for ABIN6138376  
**anti-CEACAM6 antibody (AA 200-320)**



[Go to Product page](#)

1 Image

## Overview

Quantity:	100 µL
Target:	CEACAM6
Binding Specificity:	AA 200-320
Reactivity:	Human
Host:	Rabbit
Clonality:	Polyclonal
Conjugate:	This CEACAM6 antibody is un-conjugated
Application:	Western Blotting (WB)

## Product Details

Immunogen:	Recombinant fusion protein containing a sequence corresponding to amino acids 200-320 of human CEACAM6 (NP_002474.4).
Sequence:	LTLHSVSRND AGSYECEIQN PASANRSDPV TLNVLYGPDV PTISPSKANY RPPENLNLSC HAASNPPAQY SWFINGTFQQ STQELFIPNI TVNNSGSYMC QAHNSATGLN RTTVTMITVS G
Isotype:	IgG
Cross-Reactivity:	Human, Mouse
Characteristics:	Polyclonal Antibodies
Purification:	Affinity purification

## Target Details

---

Target:	CEACAM6
Alternative Name:	CEACAM6 ( <a href="#">CEACAM6 Products</a> )
Background:	<p>This gene encodes a protein that belongs to the carcinoembryonic antigen (CEA) family whose members are glycosyl phosphatidyl inositol (GPI) anchored cell surface glycoproteins. Members of this family play a role in cell adhesion and are widely used as tumor markers in serum immunoassay determinations of carcinoma. This gene affects the sensitivity of tumor cells to adenovirus infection. The protein encoded by this gene acts as a receptor for adherent-invasive E. coli adhesion to the surface of ileal epithelial cells in patients with Crohn's disease. This gene is clustered with genes and pseudogenes of the cell adhesion molecules subgroup of the CEA family on chromosome 19.,CEACAM6,CD66c,CEAL,NCA,Immunology &amp; Inflammation,CD markers,CEACAM6</p>
Molecular Weight:	37 kDa
Gene ID:	4680
UniProt:	<a href="#">P40199</a>

## Application Details

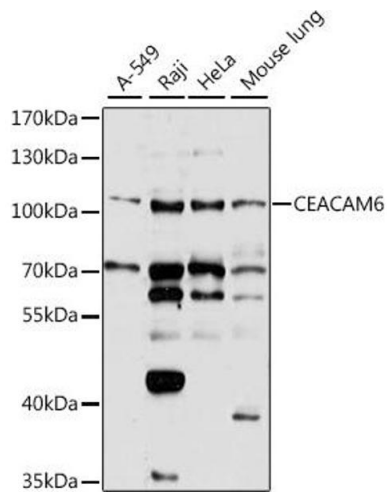
---

Application Notes:	WB,1:500 - 1:2000
Restrictions:	For Research Use only

## Handling

---

Format:	Liquid
Buffer:	PBS with 0.02 % sodium azide,50 % glycerol, pH 7.3.
Preservative:	Sodium azide
Precaution of Use:	This product contains Sodium azide: a POISONOUS AND HAZARDOUS SUBSTANCE which should be handled by trained staff only.
Storage:	-20 °C
Storage Comment:	Store at -20°C. Avoid freeze / thaw cycles.



### Western Blotting

**Image 1.** Western blot analysis of extracts of various cell lines, using CE antibody at 1:1000 dilution. Secondary antibody: HRP Goat Anti-Rabbit IgG (H+L) (ABIN1684268 and ABIN3020597) at 1:10000 dilution. Lysates/proteins: 25 µg per lane. Blocking buffer: 3% nonfat dry milk in TBST. Detection: ECL Basic Kit (RM00020). Exposure time: 10s.