

Datasheet for ABIN6138385  
**anti-CEBPE antibody (AA 1-190)**[Go to Product page](#)

## 1 Image

## Overview

Quantity:	100 µL
Target:	CEBPE
Binding Specificity:	AA 1-190
Reactivity:	Human
Host:	Rabbit
Clonality:	Polyclonal
Conjugate:	This CEBPE antibody is un-conjugated
Application:	Western Blotting (WB)

## Product Details

Immunogen:	Recombinant fusion protein containing a sequence corresponding to amino acids 1-190 of human CEBPE (NP_001796.2).
Sequence:	MSHGTYECE PRGGQQPLEF SGGRAGPGEL GDMCEHEASI DLSAYIESGE EQLLSDLFAV KPAPEARGLK GPGTPAFPHY LPPDPRPFAY PPHTFGPDRK ALGPGIYSSP GSYDPRAVAV KEEPRGPEGS RAASRGSYNP LQYQVAHCGQ TAMHLPPTLA APGQPLRVLK APLATAAPPC SPLLKAPSPA
Isotype:	IgG
Cross-Reactivity:	Human, Mouse
Characteristics:	Polyclonal Antibodies
Purification:	Affinity purification

## Target Details

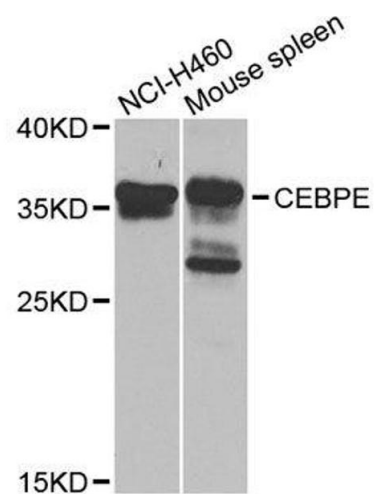
Target:	CEBPE
Alternative Name:	CEBPE ( <a href="#">CEBPE Products</a> )
Background:	The protein encoded by this gene is a bZIP transcription factor which can bind as a homodimer to certain DNA regulatory regions. It can also form heterodimers with the related protein CEBP-delta. The encoded protein may be essential for terminal differentiation and functional maturation of committed granulocyte progenitor cells. Mutations in this gene have been associated with Specific Granule Deficiency, a rare congenital disorder. Multiple variants of this gene have been described, but the full-length nature of only one has been determined.,CEBPE,C/EBP-epsilon,CRP1,Epigenetics & Nuclear Signaling,Transcription Factors,CEBPE
Molecular Weight:	30 kDa
Gene ID:	1053
UniProt:	<a href="#">Q15744</a>
Pathways:	<a href="#">Cellular Response to Molecule of Bacterial Origin</a>

## Application Details

Application Notes:	WB,1:500 - 1:2000
Comment:	HIGH QUALITY
Restrictions:	For Research Use only

## Handling

Format:	Liquid
Buffer:	PBS with 0.02 % sodium azide,50 % glycerol, pH 7.3.
Preservative:	Sodium azide
Precaution of Use:	This product contains Sodium azide: a POISONOUS AND HAZARDOUS SUBSTANCE which should be handled by trained staff only.
Storage:	-20 °C
Storage Comment:	Store at -20°C. Avoid freeze / thaw cycles.



Western Blotting

**Image 1.** Western blot analysis of extracts of various cell lines, using CEBPE antibody.