

Datasheet for ABIN6138405

anti-Centromere Protein C Pseudogene 1 (CENPCP1) (AA 1-300) antibody



[Go to Product page](#)

3 Images

Overview

Quantity:	100 µL
Target:	Centromere Protein C Pseudogene 1 (CENPCP1)
Binding Specificity:	AA 1-300
Reactivity:	Human
Host:	Rabbit
Clonality:	Polyclonal
Conjugate:	Un-conjugated
Application:	Western Blotting (WB)

Product Details

Immunogen:	Recombinant fusion protein containing a sequence corresponding to amino acids 1-300 of human CENPC (NP_001803.2).
Sequence:	MAASGLDHLK NGYRRRFCRP SRARDINTEQ GQNVLEILQD CFEEKSLAND FSTNSTKSVP NSTRKIKDTC IQSPSKECQK SHPKSVPVSS KKKEASLQFV VEPSEATNRS VQAHEVHQKI LATDVSSKNT PDSKKISSRN INDHHSEADE EFYLSVGSPS VLLDAKTSVS QNVIPSSAQK RETYTFENSV NMLPSSTEVS VKTKKRLNFD DKVMLKKIEI DNKVSDEEDK TSEGQERKPS GSSQNRIRDS EYEIQRQAKK SFSTLFLETV KRKSESSPIV RHAATAPPHS CPPDDTKLIE
Isotype:	IgG
Cross-Reactivity:	Human, Mouse, Rat
Characteristics:	Polyclonal Antibodies
Purification:	Affinity purification

Target Details

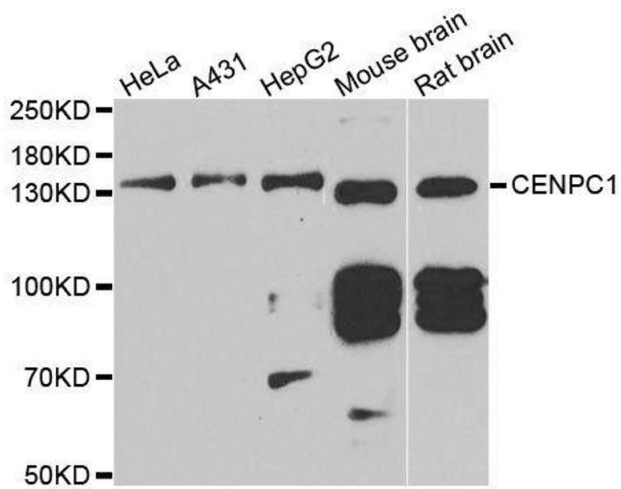
Target:	Centromere Protein C Pseudogene 1 (CENPCP1)
Alternative Name:	CENPC (CENPCP1 Products)
Background:	Centromere protein C 1 is a centromere autoantigen and a component of the inner kinetochore plate. The protein is required for maintaining proper kinetochore size and a timely transition to anaphase. A putative pseudogene exists on chromosome 12.,CENPC,CENP-C,CENPC1,MIF2,hcp-4,Epigenetics & Nuclear Signaling,Cell Biology & Developmental Biology,Cell Cycle,Centromere,CENPC
Molecular Weight:	61 kDa/106 kDa
Gene ID:	1060
UniProt:	Q03188

Application Details

Application Notes:	WB,1:500 - 1:2000
Comment:	HIGH QUALITY
Restrictions:	For Research Use only

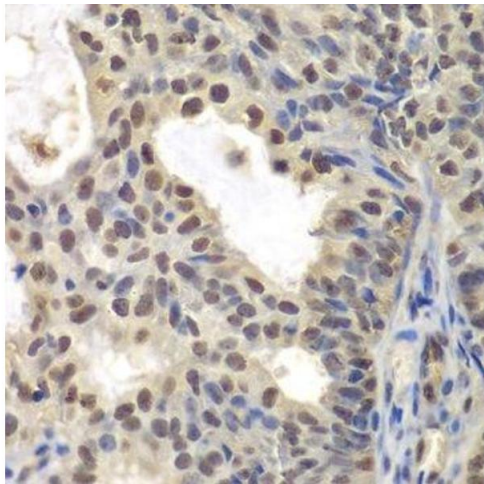
Handling

Format:	Liquid
Buffer:	PBS with 0.02 % sodium azide,50 % glycerol, pH 7.3.
Preservative:	Sodium azide
Precaution of Use:	This product contains Sodium azide: a POISONOUS AND HAZARDOUS SUBSTANCE which should be handled by trained staff only.
Storage:	-20 °C
Storage Comment:	Store at -20°C. Avoid freeze / thaw cycles.



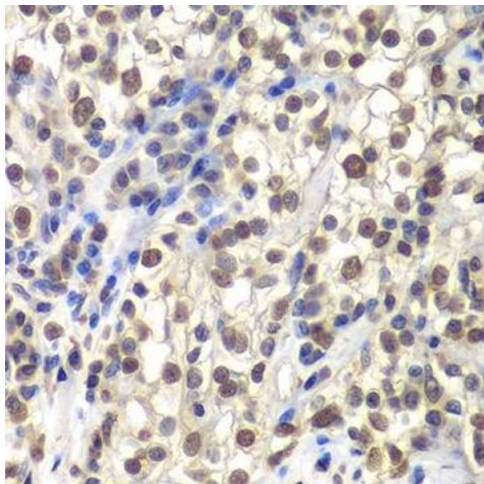
Western Blotting

Image 1. Western blot analysis of extracts of various cell lines, using CENPC antibody.



Immunohistochemistry (Paraffin-embedded Sections)

Image 2. Immunohistochemistry of paraffin-embedded human oophoroma using CENPC antibody.



Immunohistochemistry (Paraffin-embedded Sections)

Image 3. Immunohistochemistry of paraffin-embedded human kidney cancer using CENPC antibody.