

Datasheet for ABIN6138415
anti-CEP120 antibody (AA 1-270)



[Go to Product page](#)

1 Image

Overview

Quantity:	100 µL
Target:	CEP120
Binding Specificity:	AA 1-270
Reactivity:	Human
Host:	Rabbit
Clonality:	Polyclonal
Conjugate:	This CEP120 antibody is un-conjugated
Application:	Western Blotting (WB), Immunohistochemistry (IHC)

Product Details

Immunogen:	Recombinant fusion protein containing a sequence corresponding to amino acids 1-270 of human CEP120 (NP_694955.2).
Sequence:	MVSKSDQLLI VVSILEGRHF PKRPKHMLVV EAKFDGEQLA TDPVDHTDQP EFATELAWEI DRKALHQHRL QRTPIKLQCF ALDPVTSAKE TIGYIVL DLR TAQETKQAPK WYQLLSNKYT KFKSEIQISI ALETDTKPPV DSKAKGAPP RDGKVPAILA GLDPRDIVAV LNEEGGYHQI GPAEYCTDSF IMSVTIAFAT QLEQLIPCTM KLPERQPEFF FYSSLGNDV TNEPFNDLIN PNFEPERASV RIRSSVEILR VYLALQSKLQ
Isotype:	IgG
Cross-Reactivity:	Human, Mouse, Rat
Characteristics:	Polyclonal Antibodies
Purification:	Affinity purification

Target Details

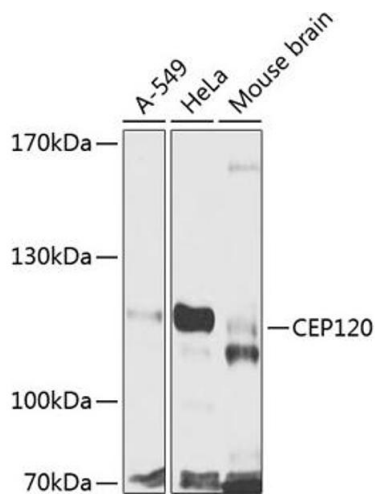
Target:	CEP120
Alternative Name:	CEP120 (CEP120 Products)
Background:	<p>This gene encodes a protein that functions in the microtubule-dependent coupling of the nucleus and the centrosome. A similar protein in mouse plays a role in both interkinetic nuclear migration, which is a characteristic pattern of nuclear movement in neural progenitors, and in neural progenitor self-renewal. Mutations in this gene are predicted to result in neurogenic defects. Alternative splicing results in multiple transcript variants.,CEP120,CCDC100,SRTD13,Signal Transduction,Cell Biology & Developmental Biology,Cell Cycle,Centrosome,CEP120</p>
Molecular Weight:	42 kDa/109 kDa/112 kDa
Gene ID:	153241
UniProt:	Q8N960

Application Details

Application Notes:	WB,1:500 - 1:2000,IHC,1:50 - 1:200
Restrictions:	For Research Use only

Handling

Format:	Liquid
Buffer:	PBS with 0.02 % sodium azide,50 % glycerol, pH 7.3.
Preservative:	Sodium azide
Precaution of Use:	This product contains Sodium azide: a POISONOUS AND HAZARDOUS SUBSTANCE which should be handled by trained staff only.
Storage:	-20 °C
Storage Comment:	Store at -20°C. Avoid freeze / thaw cycles.



Western Blotting

Image 1. Western blot analysis of extracts of various cell lines, using CEP120 antibody (ABIN6133305, ABIN6138415, ABIN6138416 and ABIN6224025) at 1:1000 dilution. Secondary antibody: HRP Goat Anti-Rabbit IgG (H+L) (ABIN1684268 and ABIN3020597) at 1:10000 dilution. Lysates/proteins: 25 µg per lane. Blocking buffer: 3 % nonfat dry milk in TBST. Detection: ECL Basic Kit (RM00020). Exposure time: 90s.