

Datasheet for ABIN6138448
anti-Adipsin antibody (AA 26-253)

3 Images

[Go to Product page](#)

Overview

Quantity:	100 µL
Target:	Adipsin (CFD)
Binding Specificity:	AA 26-253
Reactivity:	Human
Host:	Rabbit
Clonality:	Polyclonal
Conjugate:	This Adipsin antibody is un-conjugated
Application:	Western Blotting (WB)

Product Details

Immunogen:	Recombinant fusion protein containing a sequence corresponding to amino acids 26-253 of human CFD (NP_001919.2).
Sequence:	ILGGREAEAH ARPYMASVQL NGAHLCCGGVL VAEQWVLSAA HCLEDAADGK VQVLLGAHSL SQPEPSKRLY DVLRAVPHPD SQPDTIDHDL LLLQLSEKAT LGPAVRPLPW QRVDRDVAPG TLCDVAGWGI VNHAGRRPDS LQHVLPLVLD RATCNRRTHH DGAITERLMC AESNRRDSCK GDSGGPLVCG GVLEGVVTSG SRVCGNRKKP GIYTRVASYA AWIDSVLA
Isotype:	IgG
Cross-Reactivity:	Human, Mouse
Characteristics:	Polyclonal Antibodies
Purification:	Affinity purification

Target Details

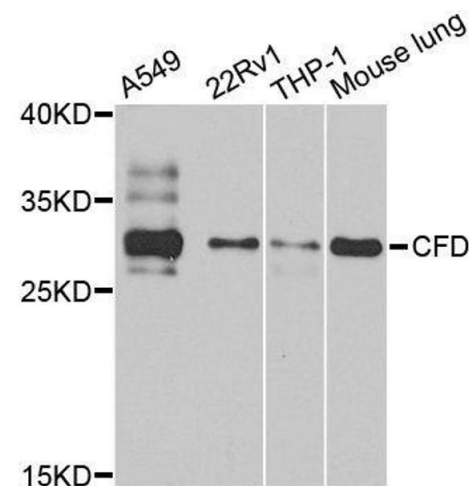
Target:	Adipsin (CFD)
Alternative Name:	CFD (CFD Products)
Background:	<p>This gene encodes a member of the S1, or chymotrypsin, family of serine peptidases. This protease catalyzes the cleavage of factor B, the rate-limiting step of the alternative pathway of complement activation. This protein also functions as an adipokine, a cell signaling protein secreted by adipocytes, which regulates insulin secretion in mice. Mutations in this gene underlie complement factor D deficiency, which is associated with recurrent bacterial meningitis infections in human patients. Alternative splicing of this gene results in multiple transcript variants. At least one of these variants encodes a preproprotein that is proteolytically processed to generate the mature protease.,CFD,ADIPSIN,ADN,DF,PFD,Immunology & Inflammation,Cell Intrinsic Innate Immunity Signaling Pathway,CFD</p>
Molecular Weight:	27 kDa
Gene ID:	1675
UniProt:	P00746
Pathways:	Complement System

Application Details

Application Notes:	WB,1:500 - 1:2000
Comment:	HIGH QUALITY
Restrictions:	For Research Use only

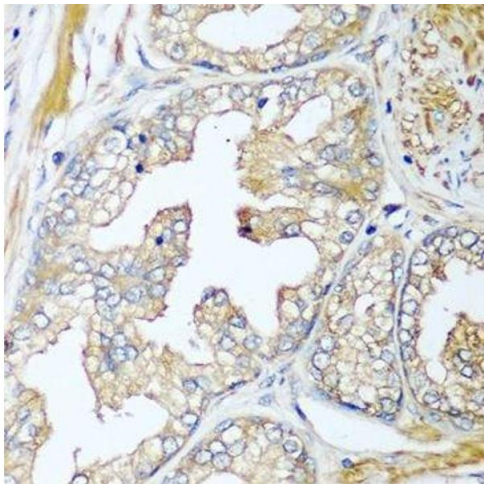
Handling

Format:	Liquid
Buffer:	PBS with 0.02 % sodium azide,50 % glycerol, pH 7.3.
Preservative:	Sodium azide
Precaution of Use:	This product contains Sodium azide: a POISONOUS AND HAZARDOUS SUBSTANCE which should be handled by trained staff only.
Storage:	-20 °C
Storage Comment:	Store at -20°C. Avoid freeze / thaw cycles.



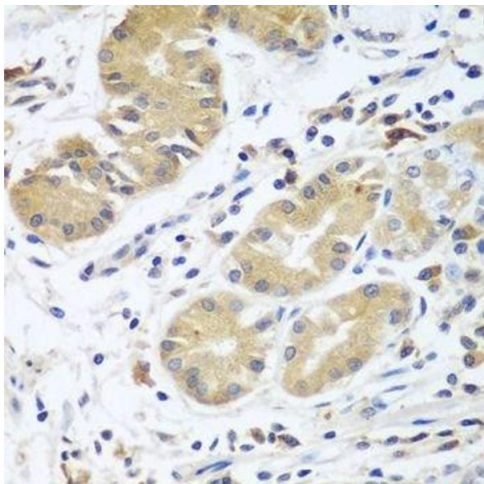
Western Blotting

Image 1. Western blot analysis of extracts of various cell lines, using CFD antibody.



Immunohistochemistry (Paraffin-embedded Sections)

Image 2. Immunohistochemistry of paraffin-embedded human prostate using CFD antibody.



Immunohistochemistry (Paraffin-embedded Sections)

Image 3. Immunohistochemistry of paraffin-embedded human stomach using CFD antibody.