



[Go to Product page](#)

Datasheet for ABIN6138450  
**anti-CFDP1 antibody (AA 1-299)**

1 Image

Overview

Quantity:	100 µL
Target:	CFDP1
Binding Specificity:	AA 1-299
Reactivity:	Human
Host:	Rabbit
Clonality:	Polyclonal
Conjugate:	This CFDP1 antibody is un-conjugated
Application:	Western Blotting (WB)

Product Details

Immunogen:	Recombinant fusion protein containing a sequence corresponding to amino acids 1-299 of human CFDP1 (NP_006315.1).
Sequence:	MEEFDSEDFS TSEEDDYVP SGGEYSEDDV NELVKEDEV D GEEQTQKTQG KKRKAQSIPA RKRRQGGLSL EEEEEEDANS ESEGSSEEE DDAAEQEKGI GSEDARKKKE DELWASFLND VGPKSKVPPS TQVKKGEETE ETSSSKLLVK AEELEKPKET EKVKITKVF D FAGEEVRVTK EVDATSKEAK SFFKQNEKEK PQANVPSALP SLPAGSGLKR SSGMSSLLGK IGAKKQKMST LEKSKLDWES FKEEEGIGEE LAIHNRGKEG YIERKAFLDR VDHRQFEIER DLRLSKMKP
Isotype:	IgG
Cross-Reactivity:	Human, Mouse, Rat
Characteristics:	Polyclonal Antibodies
Purification:	Affinity purification

## Target Details

---

Target:	CFDP1
Alternative Name:	CFDP1 ( <a href="#">CFDP1 Products</a> )
Background:	May play a role during embryogenesis.,CFDP1,BCNT,BUCENTAUR,CENP-29,CP27,SWC5,Yeti,p97,Cell Biology & Developmental Biology,Apoptosis,Stem Cells,Mesenchymal Stem Cells,CFDP1
Molecular Weight:	24 kDa/33 kDa
Gene ID:	10428
UniProt:	<a href="#">Q9UEE9</a>

## Application Details

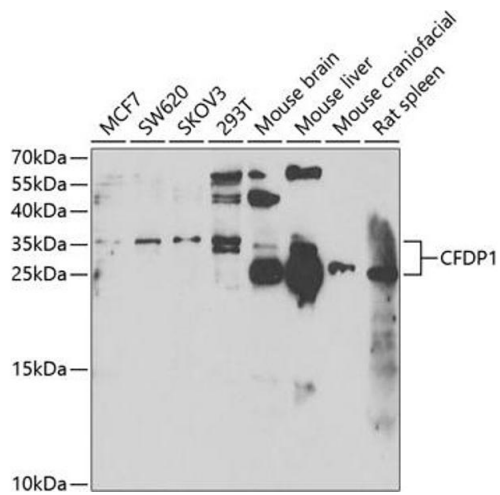
---

Application Notes:	WB,1:500 - 1:2000
Comment:	HIGH QUALITY
Restrictions:	For Research Use only

## Handling

---

Format:	Liquid
Buffer:	PBS with 0.02 % sodium azide,50 % glycerol, pH 7.3.
Preservative:	Sodium azide
Precaution of Use:	This product contains Sodium azide: a POISONOUS AND HAZARDOUS SUBSTANCE which should be handled by trained staff only.
Storage:	-20 °C
Storage Comment:	Store at -20°C. Avoid freeze / thaw cycles.



### Western Blotting

**Image 1.** Western blot analysis of extracts of various cell lines, using CFDP1 antibody at 1:1000 dilution. Secondary antibody: HRP Goat Anti-Rabbit IgG (H+L) (ABIN1684268 and ABIN3020597) at 1:10000 dilution. Lysates/proteins: 25 µg per lane. Blocking buffer: 3% nonfat dry milk in TBST. Detection: ECL Enhanced Kit (RM00021). Exposure time: 90s.