

Datasheet for ABIN6138463
anti-Cofilin antibody (AA 1-100)[Go to Product page](#)

4 Images

Overview

| | |
|----------------------|--|
| Quantity: | 100 µL |
| Target: | Cofilin (CFL1) |
| Binding Specificity: | AA 1-100 |
| Reactivity: | Human |
| Host: | Rabbit |
| Clonality: | Polyclonal |
| Conjugate: | This Cofilin antibody is un-conjugated |
| Application: | Western Blotting (WB) |

Product Details

| | |
|-------------------|--|
| Immunogen: | A synthetic peptide corresponding to a sequence within amino acids 1-100 of human CFL1 (NP_005498.1). |
| Sequence: | MASGVAVSDG VIKVFNDMKV RKSSTPEEVK KRKKAVLFCL SEDKKNIILE EGKEILVGDV GQTVDDPYAT FVKMLPDKDC RYALYDATYE TKESKKEDLV |
| Isotype: | IgG |
| Cross-Reactivity: | Human, Mouse, Rat |
| Characteristics: | Polyclonal Antibodies |
| Purification: | Affinity purification |

Target Details

| | |
|-------------------|---|
| Target: | Cofilin (CFL1) |
| Alternative Name: | CFL1 (CFL1 Products) |
| Background: | <p>The protein encoded by this gene can polymerize and depolymerize F-actin and G-actin in a pH - dependent manner. Increased phosphorylation of this protein by LIM kinase aids in Rho- induced reorganization of the actin cytoskeleton. Cofilin is a widely distributed intracellular actin-modulating protein that binds and depolymerizes filamentous F-actin and inhibits the polymerization of monomeric G-actin in a pH -dependent manner. It is involved in the translocation of actin-cofilin complex from cytoplasm to nucleus.[supplied by OMIM, Apr 2004],CFL1,CFL,HEL-S-15,cofilin,cofilin-1,Cancer,Invasion and Metastasis,Signal Transduction,Cell Biology & Developmental Biology,Apoptosis,Cell Adhesion,Cytoskeleton,Microfilaments,Microtubules,Actins,TGF-b-Smad Signaling Pathway,Immunology & Inflammation,Neuroscience,Cell Type Marker,Cardiovascular,Heart,Contractility,Neuron marker,Axon marker,CFL1</p> |
| Molecular Weight: | 18 kDa |
| Gene ID: | 1072 |
| UniProt: | P23528 |
| Pathways: | Regulation of Cell Size , Tube Formation , Protein targeting to Nucleus , CXCR4-mediated Signaling Events |

Application Details

| | |
|--------------------|-----------------------|
| Application Notes: | WB,1:500 - 1:2000 |
| Comment: | HIGH QUALITY |
| Restrictions: | For Research Use only |

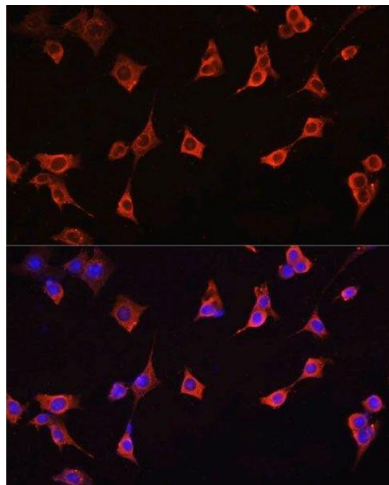
Handling

| | |
|--------------------|--|
| Format: | Liquid |
| Buffer: | PBS with 0.02 % sodium azide,50 % glycerol, pH 7.3. |
| Preservative: | Sodium azide |
| Precaution of Use: | This product contains Sodium azide: a POISONOUS AND HAZARDOUS SUBSTANCE which should be handled by trained staff only. |
| Storage: | -20 °C |

Handling

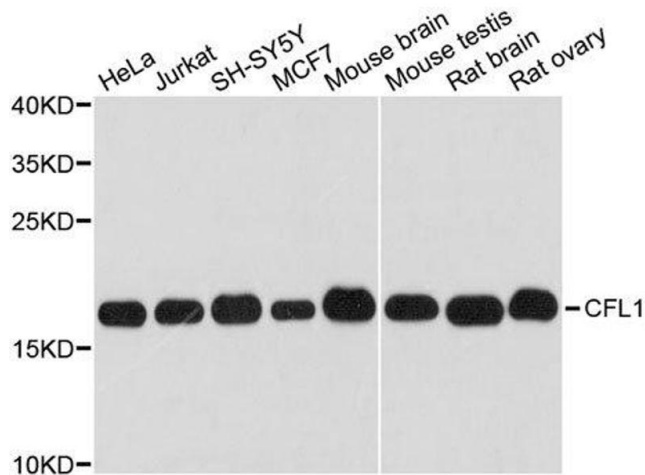
Storage Comment: Store at -20°C. Avoid freeze / thaw cycles.

Images



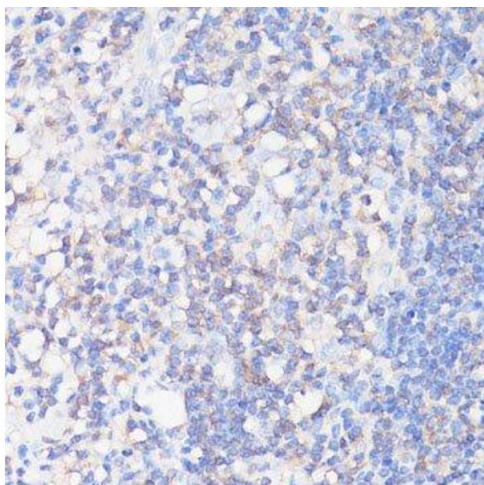
Immunofluorescence

Image 1. Immunofluorescence analysis of NIH/3T3 cells using CFL1 antibody.



Western Blotting

Image 2. Western blot analysis of extracts of various cell lines, using CFL1 antibody.



Immunohistochemistry (Paraffin-embedded Sections)

Image 3. Immunohistochemistry of paraffin-embedded human appendix using CFL1 antibody.

Please check the [product details page](#) for more images. Overall 4 images are available for ABIN6138463.