

Datasheet for ABIN6138467  
**anti-CFP antibody (AA 190-469)**



[Go to Product page](#)

5 Images

## Overview

Quantity:	100 µL
Target:	CFP
Binding Specificity:	AA 190-469
Reactivity:	Human
Host:	Rabbit
Clonality:	Polyclonal
Conjugate:	This CFP antibody is un-conjugated
Application:	Western Blotting (WB), Immunohistochemistry (IHC), Immunofluorescence (IF)

## Product Details

Immunogen:	Recombinant fusion protein containing a sequence corresponding to amino acids 190-469 of human CFP (NP_001138724.1).
Sequence:	CPTHGAWATW GPWTPCSASC HGGPHEPKET RSRKCSAPEP SQKPPGKPCP GLAYEQRRCT GLPPCPVAGG WGPWGPVSPC PVTGCLGQTM EQRTCNHPVP QHGGPFCAGD ATRTHICNTA VPCPVDGEWD SWGEWSPCIR RNMKSISCQE IPGQQSRGRT CRGRKFDGHR CAGQQDIRH CYSIQHCPLK GSWSEWSTWG LCMPPCGPNP TRARQLCTP LLPKYPPTVS MVEGQGEKNV TFWGRPLPRC EELQGQKLVV EEKRPLHVP ACKDPEEEEL
Isotype:	IgG
Cross-Reactivity:	Human, Mouse, Rat
Characteristics:	Polyclonal Antibodies
Purification:	Affinity purification

## Target Details

---

Target:	CFP
Alternative Name:	CFP ( <a href="#">CFP Products</a> )
Background:	<p>This gene encodes a plasma glycoprotein that positively regulates the alternative complement pathway of the innate immune system. This protein binds to many microbial surfaces and apoptotic cells and stabilizes the C3- and C5-convertase enzyme complexes in a feedback loop that ultimately leads to formation of the membrane attack complex and lysis of the target cell. Mutations in this gene result in two forms of properdin deficiency, which results in high susceptibility to meningococcal infections. Multiple alternatively spliced variants, encoding the same protein, have been identified.,CFP,BFD,PFC,PFD,PROPERDIN,properdin,Immunology &amp; Inflammation,Cell Intrinsic Innate Immunity Signaling Pathway,CFP</p>
Molecular Weight:	51 kDa
Gene ID:	5199
UniProt:	<a href="#">P27918</a>
Pathways:	<a href="#">Complement System</a>

## Application Details

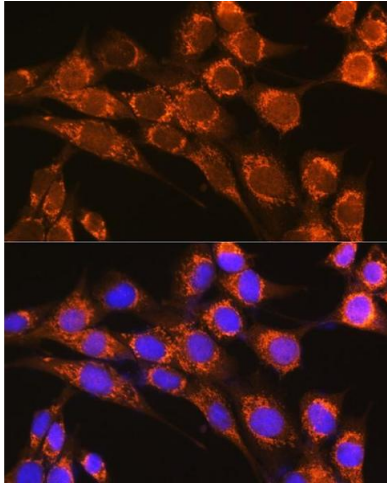
---

Application Notes:	WB,1:500 - 1:2000,IHC,1:50 - 1:200,IF,1:50 - 1:200
Restrictions:	For Research Use only

## Handling

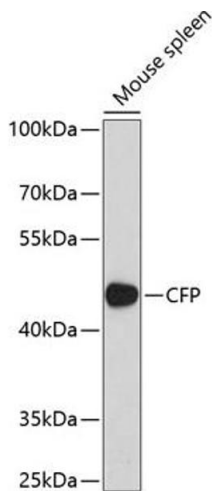
---

Format:	Liquid
Buffer:	PBS with 0.02 % sodium azide,50 % glycerol, pH 7.3.
Preservative:	Sodium azide
Precaution of Use:	This product contains Sodium azide: a POISONOUS AND HAZARDOUS SUBSTANCE which should be handled by trained staff only.
Storage:	-20 °C
Storage Comment:	Store at -20°C. Avoid freeze / thaw cycles.



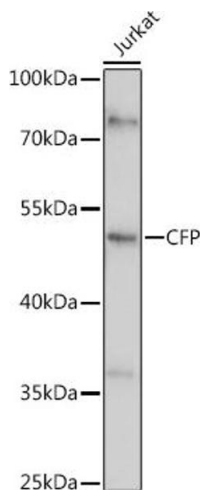
### Immunofluorescence

**Image 1.** Immunofluorescence analysis of NIH-3T3 cells using CFP Rabbit pAb (ABIN6127651, ABIN6138467, ABIN6138468 and ABIN6221045) at dilution of 1:100 (40x lens). Blue: DAPI for nuclear staining.



### Western Blotting

**Image 2.** Western blot analysis of extracts of mouse spleen, using CFP antibody (ABIN6127651, ABIN6138467, ABIN6138468 and ABIN6221045) at 1:1000 dilution. Secondary antibody: HRP Goat Anti-Rabbit IgG (H+L) (ABIN1684268 and ABIN3020597) at 1:10000 dilution. Lysates/proteins: 25 µg per lane. Blocking buffer: 3 % nonfat dry milk in TBST. Detection: ECL Basic Kit (RM00020). Exposure time: 90s.



### Western Blotting

**Image 3.** Western blot analysis of extracts of Jurkat cells, using CFP antibody (ABIN6127651, ABIN6138467, ABIN6138468 and ABIN6221045) at 1:1000 dilution. Secondary antibody: HRP Goat Anti-Rabbit IgG (H+L) (ABIN1684268 and ABIN3020597) at 1:10000 dilution. Lysates/proteins: 25 µg per lane. Blocking buffer: 3 % nonfat dry milk in TBST. Detection: ECL Basic Kit (RM00020). Exposure time: 30s.

Please check the [product details page](#) for more images. Overall 5 images are available for ABIN6138467.