



[Go to Product page](#)

Datasheet for ABIN6138469
anti-CFTR antibody (AA 1161-1480)

3 Images

Overview

Quantity:	100 µL
Target:	CFTR
Binding Specificity:	AA 1161-1480
Reactivity:	Human
Host:	Rabbit
Clonality:	Polyclonal
Conjugate:	This CFTR antibody is un-conjugated
Application:	Immunofluorescence (IF), Western Blotting (WB)

Product Details

Immunogen:	Recombinant fusion protein containing a sequence corresponding to amino acids 1161-1480 of human CFTR (NP_000483.3).
Sequence:	SRVFKFIDMP TEGKPTKSTK PYKNGQLSKV MIIENSHVKK DDIWPSGGQM TVKDLTAKYT EGGNAILANI SFSISPGQRV GLLGRTGSGK STLLSAFLRL LNTEGEIQID GVSWDSITLQ QWRKAFGVIP QKVFIFSGTF RKNLDPYEQW SDQEIWKVAD EVGLRSVIEQ FPGKLDVFLV DGGCVLSHGH KQLMCLARSV LSKAKILLLD EPSAHLDPVT YQIIRRTLKQ AFADCTVILC EHRIEAMLEC QQFLVIEENK VRQYDSIQKL LNERSLFRQA ISPSDRVKLF PHRNSSKCKS KPQIAALKEE TEEEVQDTRL
Isotype:	IgG
Cross-Reactivity:	Human, Mouse, Rat
Characteristics:	Polyclonal Antibodies

Product Details

Purification: Affinity purification

Target Details

Target: CFTR

Alternative Name: CFTR ([CFTR Products](#))

Background: This gene encodes a member of the ATP-binding cassette (ABC) transporter superfamily. ABC proteins transport various molecules across extra- and intra-cellular membranes. ABC genes are divided into seven distinct subfamilies (ABC1, MDR/TAP, MRP, ALD, OABP, GCN20, White). This protein is a member of the MRP subfamily that is involved in multi-drug resistance. The encoded protein functions as a chloride channel and controls the regulation of other transport pathways. Mutations in this gene are associated with the autosomal recessive disorders cystic fibrosis and congenital bilateral aplasia of the vas deferens. Alternatively spliced transcript variants have been described, many of which result from mutations in this gene.,CFTR,ABC35,ABCC7,CF,CFTR/MRP,MRP7,TNR-CFTR,dJ760C5.1,Cancer,Cell Biology & Developmental Biology,Endocrine & Metabolism,CFTR

Molecular Weight: 69 kDa/161 kDa/168 kDa

Gene ID: 1080

UniProt: [P13569](#)

Application Details

Application Notes: WB,1:500 - 1:2000,IF,1:50 - 1:200

Restrictions: For Research Use only

Handling

Format: Liquid

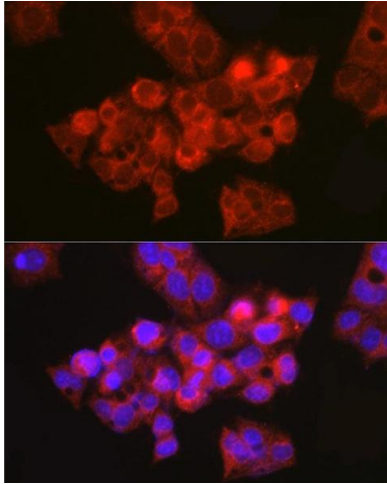
Buffer: PBS with 0.02 % sodium azide,50 % glycerol, pH 7.3.

Preservative: Sodium azide

Precaution of Use: This product contains Sodium azide: a POISONOUS AND HAZARDOUS SUBSTANCE which should be handled by trained staff only.

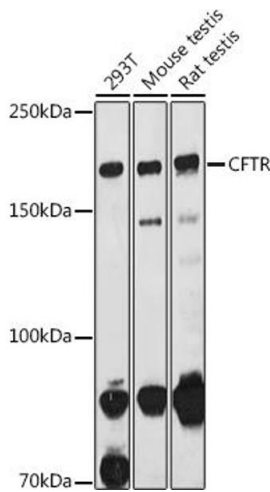
Storage: -20 °C

Storage Comment: Store at -20°C. Avoid freeze / thaw cycles.



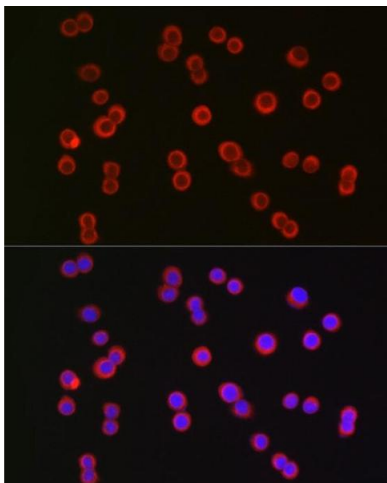
Immunofluorescence

Image 1. Immunofluorescence analysis of HepG2 cells using CFTR Rabbit pAb (ABIN6129855, ABIN6138469, ABIN6138470 and ABIN6224429) at dilution of 1:150 (40x lens). Blue: DAPI for nuclear staining.



Western Blotting

Image 2. Western blot analysis of extracts of various cell lines, using CFTR antibody (ABIN6129855, ABIN6138469, ABIN6138470 and ABIN6224429) at 1:1000 dilution. Secondary antibody: HRP Goat Anti-Rabbit IgG (H+L) (ABIN1684268 and ABIN3020597) at 1:10000 dilution. Lysates/proteins: 25 µg per lane. Blocking buffer: 3 % nonfat dry milk in TBST. Detection: ECL Basic Kit (RM00020). Exposure time: 180s.



Immunofluorescence

Image 3. Immunofluorescence analysis of HT-29 cells using CFTR Rabbit pAb (ABIN6129855, ABIN6138469, ABIN6138470 and ABIN6224429) at dilution of 1:150 (40x lens). Blue: DAPI for nuclear staining.