



[Go to Product page](#)

Datasheet for ABIN6138473
anti-CGB5 antibody (AA 20-165)

1 Image

Overview

Quantity:	100 µL
Target:	CGB5
Binding Specificity:	AA 20-165
Reactivity:	Human
Host:	Rabbit
Clonality:	Polyclonal
Conjugate:	This CGB5 antibody is un-conjugated
Application:	Western Blotting (WB)

Product Details

Immunogen:	Recombinant fusion protein containing a sequence corresponding to amino acids 20-165 of human CGB5 (NP_000728.1).
Sequence:	ASKEPLRPRC RPINATLAVE KEGCPVCITV NTTICAGYCP TMTRVLQGV L PALPQVVCNY RDVRFESIRL PGCPRGVNPV VSYAVALSCQ CALCRRSTTD CGGPKDHPLT CDDPRFQDSS SSKAPPPSLP SPSRLPGPSD TPILPQ
Isotype:	IgG
Cross-Reactivity:	Human
Characteristics:	Polyclonal Antibodies
Purification:	Affinity purification

Target Details

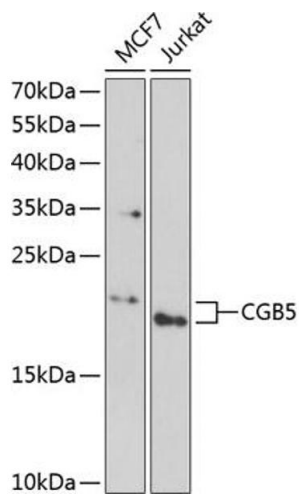
Target:	CGB5
Alternative Name:	CGB5 (CGB5 Products)
Background:	This gene is a member of the glycoprotein hormone beta chain family and encodes the beta 5 subunit of chorionic gonadotropin (CG). Glycoprotein hormones are heterodimers consisting of a common alpha subunit and an unique beta subunit which confers biological specificity. CG is produced by the trophoblastic cells of the placenta and stimulates the ovaries to synthesize the steroids that are essential for the maintenance of pregnancy. The beta subunit of CG is encoded by 6 genes which are arranged in tandem and inverted pairs on chromosome 19q13.3 and contiguous with the luteinizing hormone beta subunit gene.,CGB5,CGB,HCG,hCGB,CGB5
Molecular Weight:	18 kDa
Gene ID:	93659
UniProt:	P0DN86

Application Details

Application Notes:	WB,1:500 - 1:2000
Comment:	HIGH QUALITY
Restrictions:	For Research Use only

Handling

Format:	Liquid
Buffer:	PBS with 0.02 % sodium azide,50 % glycerol, pH 7.3.
Preservative:	Sodium azide
Precaution of Use:	This product contains Sodium azide: a POISONOUS AND HAZARDOUS SUBSTANCE which should be handled by trained staff only.
Storage:	-20 °C
Storage Comment:	Store at -20°C. Avoid freeze / thaw cycles.



Western Blotting

Image 1. Western blot analysis of extracts of various cell lines, using CGB5 antibody (ABIN6132186, ABIN6138473, ABIN6138474 and ABIN6222148) at 1:1000 dilution. Secondary antibody: HRP Goat Anti-Rabbit IgG (H+L) (ABIN1684268 and ABIN3020597) at 1:10000 dilution. Lysates/proteins: 25 µg per lane. Blocking buffer: 3 % nonfat dry milk in TBST. Detection: ECL Enhanced Kit (RM00021). Exposure time: 90s.