

Datasheet for ABIN6138479  
**anti-CGGBP1 antibody (AA 1-167)**



[Go to Product page](#)

1 Image

## Overview

Quantity:	100 µL
Target:	CGGBP1
Binding Specificity:	AA 1-167
Reactivity:	Human
Host:	Rabbit
Clonality:	Polyclonal
Conjugate:	This CGGBP1 antibody is un-conjugated
Application:	Western Blotting (WB)

## Product Details

Immunogen:	Recombinant fusion protein containing a sequence corresponding to amino acids 1-167 of human CGGBP1 (NP_003654.3).
Sequence:	MERFVVTAPP ARNRKTALY VTPLDRVTEF GGELHEDGGK LFCTSCNVVL NHVRKSAISD HLKSKTHTKR KAEFEEQNVR KKQRPLTASL QCNSTAQTEK VSVIQDFVKM CLEANIPLEK ADHPAVRAFL SRHVKNNGSSI PKSDQLRRAY LPDGYENENQ LLNSQDC
Isotype:	IgG
Cross-Reactivity:	Human
Characteristics:	Polyclonal Antibodies
Purification:	Affinity purification

## Target Details

---

Target:	CGGBP1
Alternative Name:	CGGBP1 ( <a href="#">CGGBP1 Products</a> )
Background:	CGGBP1 influences expression of the FMR1 gene (MIM 309550), which is associated with the fragile X mental retardation syndrome (MIM 300624), by specifically interacting with the 5-prime (CGG) <sub>n</sub> -3-prime repeat in its 5-prime UTR.[supplied by OMIM, Mar 2008],CGGBP1,CGGBP,p20-CGGBP,Epigenetics & Nuclear Signaling,CGGBP1
Molecular Weight:	18 kDa
Gene ID:	8545
UniProt:	<a href="#">Q9UFW8</a>

## Application Details

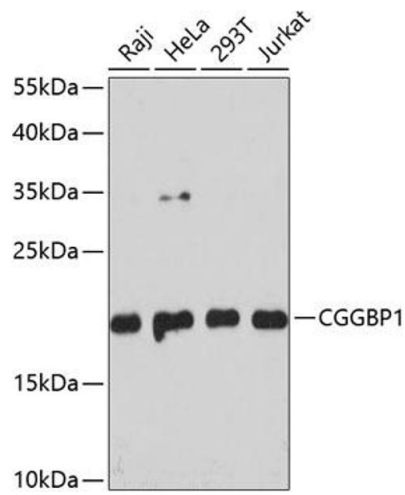
---

Application Notes:	WB,1:500 - 1:2000
Restrictions:	For Research Use only

## Handling

---

Format:	Liquid
Buffer:	PBS with 0.02 % sodium azide,50 % glycerol, pH 7.3.
Preservative:	Sodium azide
Precaution of Use:	This product contains Sodium azide: a POISONOUS AND HAZARDOUS SUBSTANCE which should be handled by trained staff only.
Storage:	-20 °C
Storage Comment:	Store at -20°C. Avoid freeze / thaw cycles.



### Western Blotting

**Image 1.** Western blot analysis of extracts of various cell lines, using CGGBP1 antibody at 1:3000 dilution. Secondary antibody: HRP Goat Anti-Rabbit IgG (H+L) (ABIN1684268 and ABIN3020597) at 1:10000 dilution. Lysates/proteins: 25 µg per lane. Blocking buffer: 3% nonfat dry milk in TBST. Detection: ECL Basic Kit (RM00020). Exposure time: 60s.