

Datasheet for ABIN6138482
anti-CHAF1B antibody (AA 270-559)



[Go to Product page](#)

4 Images

1 Publication

Overview

Quantity:	100 µL
Target:	CHAF1B
Binding Specificity:	AA 270-559
Reactivity:	Human
Host:	Rabbit
Clonality:	Polyclonal
Conjugate:	This CHAF1B antibody is un-conjugated
Application:	Western Blotting (WB), Immunohistochemistry (IHC)

Product Details

Immunogen:	Recombinant fusion protein containing a sequence corresponding to amino acids 270-559 of human p60 CAF1 (NP_005432.1).
Sequence:	SRKNLKRPIA HLPCEPGKATL AVRCCPVYFE LRPVVETGVE LMSLPYRLVF AVASEDSVLL YDTQQSFPPG YVSNIHHTL SDISWSSDGA FLAISSTDGY CSFVTFEKDE LGIPLKEKPV LNMRTPD TAK KTKSQTHRGS SPGPRPVEGT PASRTQDPSS PGTTPPQARQ APAPTVIDP PSITPAVKSP LPGPSEEKTL QPSSQNTKAH PSRRVTLNNTL QAWSKTTPRR INLTPLKTD PPSSVPTSVI STPSTEEIQS ETPGDAQGSP PELKRPRLDE NKGGTESLDP
Isotype:	IgG
Cross-Reactivity:	Human, Mouse, Rat
Characteristics:	Polyclonal Antibodies
Purification:	Affinity purification

Target Details

Target:	CHAF1B
Alternative Name:	CHAF1B (CHAF1B Products)
Background:	<p>Chromatin assembly factor I (CAF-I) is required for the assembly of histone octamers onto newly-replicated DNA. CAF-I is composed of three protein subunits, p50, p60, and p150. The protein encoded by this gene corresponds to the p60 subunit and is required for chromatin assembly after replication. The encoded protein is differentially phosphorylated in a cell cycle-dependent manner. In addition, it is normally found in the nucleus except during mitosis, when it is released into the cytoplasm. This protein is a member of the WD-repeat HIR1 family and may also be involved in DNA repair.,CHAF1B,CAF-1,CAF-IP60,CAF1,CAF1A,CAF1P60,MPHOSPH7,MPP7,Epigenetics & Nuclear Signaling,Chromatin Remodeling,CHAF1B</p>
Molecular Weight:	61 kDa
Gene ID:	8208
UniProt:	Q13112

Application Details

Application Notes:	WB,1:500 - 1:2000,IHC,1:50 - 1:200
Comment:	HIGH QUALITY
Restrictions:	For Research Use only

Handling

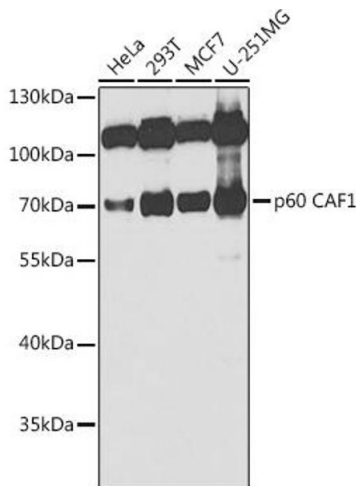
Format:	Liquid
Buffer:	PBS with 0.02 % sodium azide,50 % glycerol, pH 7.3.
Preservative:	Sodium azide
Precaution of Use:	This product contains Sodium azide: a POISONOUS AND HAZARDOUS SUBSTANCE which should be handled by trained staff only.
Storage:	-20 °C
Storage Comment:	Store at -20°C. Avoid freeze / thaw cycles.

Product cited in:

Zaidan, Walker, Brown, Schaffer, Scalf, Shortreed, Iyer, Smith, Sridharan: "

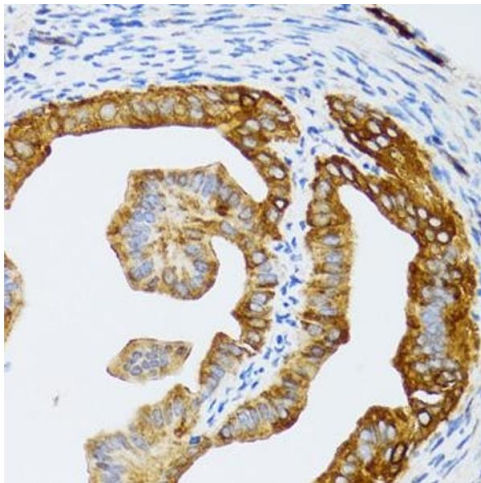
Compartmentalization of HP1 Proteins in Pluripotency Acquisition and Maintenance." in: **Stem cell reports**, Vol. 10, Issue 2, pp. 627-641, (2019) ([PubMed](#)).

Images



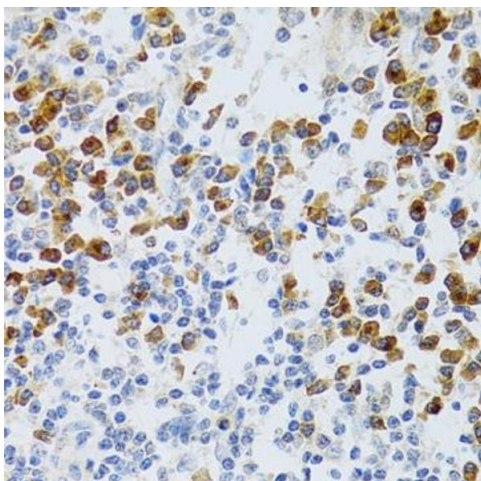
Western Blotting

Image 1. Western blot analysis of extracts of various cell lines, using p60 C antibody at 1:1000 dilution. Secondary antibody: HRP Goat Anti-Rabbit IgG (H+L) (ABIN1684268 and ABIN3020597) at 1:10000 dilution. Lysates/proteins: 25 µg per lane. Blocking buffer: 3 % nonfat dry milk in TBST. Detection: ECL Enhanced Kit (RM00021). Exposure time: 30s.



Immunohistochemistry

Image 2. Immunohistochemistry of paraffin-embedded rat fallopian tube using p60 C antibody at dilution of 1:100 (40x lens). Perform microwave antigen retrieval with 10 mM PBS buffer pH 7.2 before commencing with IHC staining protocol.



Immunohistochemistry

Image 3. Immunohistochemistry of paraffin-embedded human tonsil using p60 C antibody at dilution of 1:100 (40x lens). Perform microwave antigen retrieval with 10 mM PBS buffer pH 7.2 before commencing with IHC staining protocol.

Images

Please check the [product details page](#) for more images. Overall 4 images are available for ABIN6138482.