

Datasheet for ABIN6138492  
**anti-CHCHD3 antibody (AA 1-227)**



[Go to Product page](#)

4 Images

## Overview

Quantity:	100 µL
Target:	CHCHD3
Binding Specificity:	AA 1-227
Reactivity:	Human
Host:	Rabbit
Clonality:	Polyclonal
Conjugate:	This CHCHD3 antibody is un-conjugated
Application:	Western Blotting (WB), Immunofluorescence (IF), Immunoprecipitation (IP)

## Product Details

Immunogen:	Recombinant fusion protein containing a sequence corresponding to amino acids 1-227 of human CHCHD3 (NP_060282.1).
Sequence:	MGGTTSTRRV TFEADENENI TVVKGIRLSE NVIDRMKESS PSGSKSQRYS GAYGASVSDE ELKRRVAEEL ALEQAKKESE DQKRLKQAKE LDRERAAANE QLTRAILRER ICSEEERAKA KHLARQLEEK DRVLKKQDAF YKEQLARLEE RSSEFYRVTT EQYQKAAEEV EAKFKRYESH PVCADLQAKI LQCYRENTHQ TLKCSALATQ YMHCVNHAKQ SMLEKGG
Isotype:	IgG
Cross-Reactivity:	Human, Mouse, Rat
Characteristics:	Polyclonal Antibodies
Purification:	Affinity purification

## Target Details

---

Target:	CHCHD3
Alternative Name:	CHCHD3 ( <a href="#">CHCHD3 Products</a> )
Background:	<p>The protein encoded by this gene is an inner mitochondrial membrane scaffold protein. Absence of the encoded protein affects the structural integrity of mitochondrial cristae and leads to reductions in ATP production, cell growth, and oxygen consumption. This protein is part of the mitochondrial contact site and cristae organizing system (MICOS). Several transcript variants encoding different isoforms have been found for this gene.</p> <p>.,CHCHD3,MINOS3,Mic19,PPP1R22,Cancer,Signal Transduction,Endocrine &amp; Metabolism,Mitochondrial metabolism,Mitochondrial markers,CHCHD3</p>
Molecular Weight:	26 kDa
Gene ID:	54927
UniProt:	<a href="#">Q9NX63</a>

## Application Details

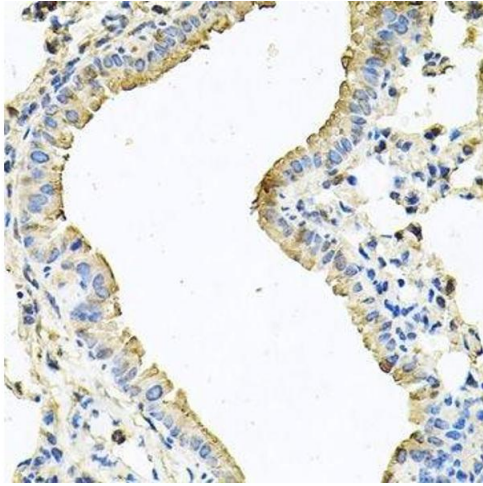
---

Application Notes:	WB,1:500 - 1:2000,IF,1:50 - 1:200,IP,1:50 - 1:200
Comment:	HIGH QUALITY
Restrictions:	For Research Use only

## Handling

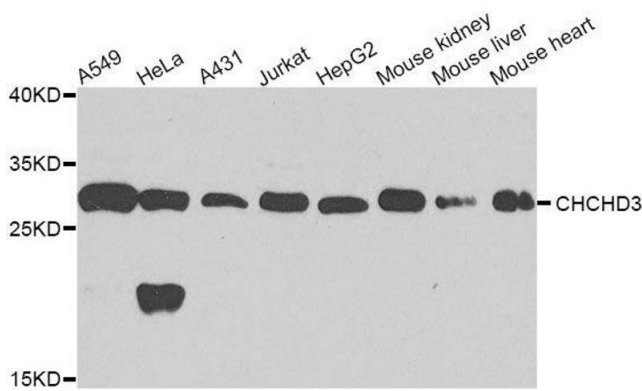
---

Format:	Liquid
Buffer:	PBS with 0.02 % sodium azide,50 % glycerol, pH 7.3.
Preservative:	Sodium azide
Precaution of Use:	This product contains Sodium azide: a POISONOUS AND HAZARDOUS SUBSTANCE which should be handled by trained staff only.
Storage:	-20 °C
Storage Comment:	Store at -20°C. Avoid freeze / thaw cycles.



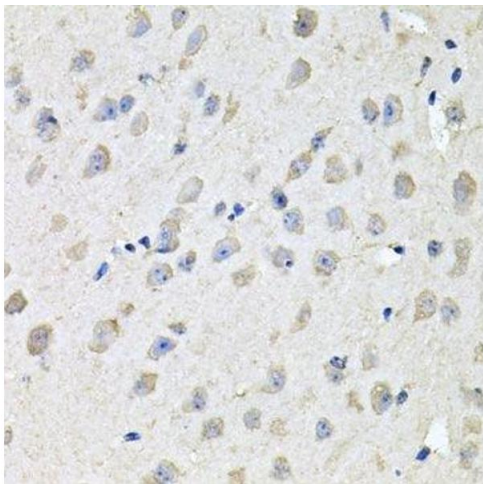
#### Immunohistochemistry (Paraffin-embedded Sections)

**Image 1.** Immunohistochemistry of paraffin-embedded mouse lung using CHCHD3 antibody.



#### Western Blotting

**Image 2.** Western blot analysis of extracts of various cell lines, using CHCHD3 antibody.



#### Immunohistochemistry (Paraffin-embedded Sections)

**Image 3.** Immunohistochemistry of paraffin-embedded mouse brain using CHCHD3 antibody.

Please check the [product details page](#) for more images. Overall 4 images are available for ABIN6138492.