



[Go to Product page](#)

Datasheet for ABIN6138523
anti-CHERP antibody (AA 650-750)

1 Image

Overview

Quantity:	100 µL
Target:	CHERP
Binding Specificity:	AA 650-750
Reactivity:	Human
Host:	Rabbit
Clonality:	Polyclonal
Conjugate:	This CHERP antibody is un-conjugated
Application:	Western Blotting (WB)

Product Details

Immunogen:	A synthetic peptide corresponding to a sequence within amino acids 650-750 of human CHERP (NP_006378.3).
Sequence:	LPAGLMAPLV KLEDHEYKPL DPKDIRLPPP MPPSERLLAA VEFYSPPSH DRPRNSEGWE QNGLYEFFRA KMRARRRKGQ EKRNSGPSRS RSRSKSRGRS S
Isotype:	IgG
Cross-Reactivity:	Human, Mouse, Rat
Characteristics:	Polyclonal Antibodies
Purification:	Affinity purification

Target Details

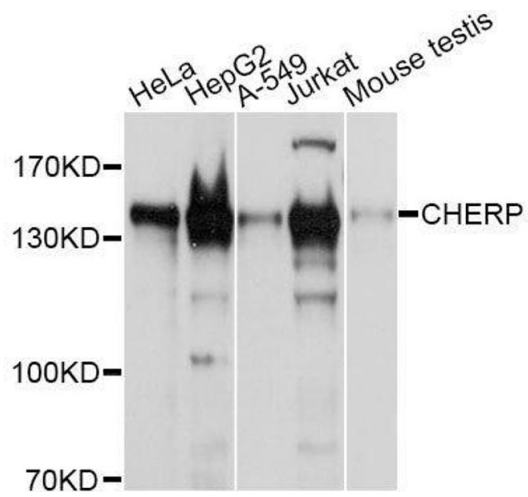
Target:	CHERP
Alternative Name:	CHERP (CHERP Products)
Background:	Involved in calcium homeostasis, growth and proliferation.,CHERP,DAN16,SCAF6,SRA1,Epigenetics & Nuclear Signaling,RNA Binding,Signal Transduction,Neuroscience,Calcium Signaling,CHERP
Molecular Weight:	103 kDa
Gene ID:	10523
UniProt:	Q8IWX8

Application Details

Application Notes:	WB,1:500 - 1:2000
Comment:	HIGH QUALITY
Restrictions:	For Research Use only

Handling

Format:	Liquid
Buffer:	PBS with 0.02 % sodium azide,50 % glycerol, pH 7.3.
Preservative:	Sodium azide
Precaution of Use:	This product contains Sodium azide: a POISONOUS AND HAZARDOUS SUBSTANCE which should be handled by trained staff only.
Storage:	-20 °C
Storage Comment:	Store at -20°C. Avoid freeze / thaw cycles.



Western Blotting

Image 1. Western blot analysis of extracts of various cell lines, using CHERP antibody.