



[Go to Product page](#)

Datasheet for ABIN6138535
anti-CHL1 antibody (AA 690-950)

1 Image

Overview

Quantity:	100 µL
Target:	CHL1
Binding Specificity:	AA 690-950
Reactivity:	Human
Host:	Rabbit
Clonality:	Polyclonal
Conjugate:	This CHL1 antibody is un-conjugated
Application:	Western Blotting (WB)

Product Details

Immunogen:	Recombinant fusion protein containing a sequence corresponding to amino acids 690-950 of human CHL1 (NP_001240316.1).
Sequence:	NEVGRSQPSQ PSDHHETPPA APDRNPQNIR VQASQPKEMI IKWEPLKSME QNGPGLEYRV TWKPQGAPVE WEEETVTNHT LRVMTPAVYA PYDVKVQAIN QLGSGPDPQS VTLYSGEDYP DTAPVIHGVD VINSTLVKVT WSTVPKDRVH GRLKGYQINW WKTKSLLDGR THPKEVNILR FSGQRNSGMV PSLDAFSEFH LTVLAYNSKG AGPESEPYIF QTPEGVPEQP TFLKVIKVDK DTATLSWGLP KKLNGNLTGY L
Isotype:	IgG
Cross-Reactivity:	Human, Mouse, Rat
Characteristics:	Polyclonal Antibodies
Purification:	Affinity purification

Target Details

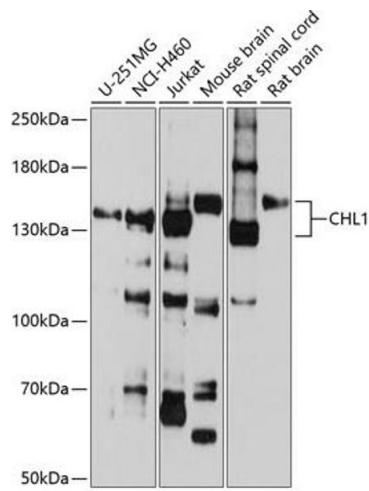
Target:	CHL1
Alternative Name:	CHL1 (CHL1 Products)
Background:	<p>The protein encoded by this gene is a member of the L1 gene family of neural cell adhesion molecules. It is a neural recognition molecule that may be involved in signal transduction pathways. The deletion of one copy of this gene may be responsible for mental defects in patients with 3p- syndrome. This protein may also play a role in the growth of certain cancers. Alternate splicing results in both coding and non-coding variants.,CHL1,CALL,L1CAM2,Signal Transduction,Cell Biology & Developmental Biology,Cell Adhesion,Cytoskeleton,Microfilaments,Neuroscience,CHL1</p>
Molecular Weight:	135 kDa/136 kDa
Gene ID:	10752
UniProt:	O00533

Application Details

Application Notes:	WB,1:200 - 1:2000
Restrictions:	For Research Use only

Handling

Format:	Liquid
Buffer:	PBS with 0.02 % sodium azide,50 % glycerol, pH 7.3.
Preservative:	Sodium azide
Precaution of Use:	This product contains Sodium azide: a POISONOUS AND HAZARDOUS SUBSTANCE which should be handled by trained staff only.
Storage:	-20 °C
Storage Comment:	Store at -20°C. Avoid freeze / thaw cycles.



Western Blotting

Image 1. Western blot analysis of extracts of various cell lines, using CHL1 antibody (ABIN6133354, ABIN6138535, ABIN6138536 and ABIN6225066) at 1:1000 dilution. Secondary antibody: HRP Goat Anti-Rabbit IgG (H+L) (ABIN1684268 and ABIN3020597) at 1:10000 dilution. Lysates/proteins: 25 µg per lane. Blocking buffer: 3 % nonfat dry milk in TBST. Detection: ECL Basic Kit (RM00020). Exposure time: 30s.