



[Go to Product page](#)

Datasheet for ABIN6138537
anti-CHM antibody (AA 120-210)

1 Image

Overview

Quantity:	100 µL
Target:	CHM
Binding Specificity:	AA 120-210
Reactivity:	Human
Host:	Rabbit
Clonality:	Polyclonal
Conjugate:	This CHM antibody is un-conjugated
Application:	Western Blotting (WB)

Product Details

Immunogen:	Recombinant fusion protein containing a sequence corresponding to amino acids 120-210 of human CHM (NP_000381.1).
Sequence:	KNHALVTSAN STEAADSAFL PTEDESLSTM SCEMLTEQTP SSDPENALEV NGA EVTGEKE NH CDDKTCVP STSAEDMSEN VPIAEDTTEQ P
Isotype:	IgG
Cross-Reactivity:	Human
Characteristics:	Polyclonal Antibodies
Purification:	Affinity purification

Target Details

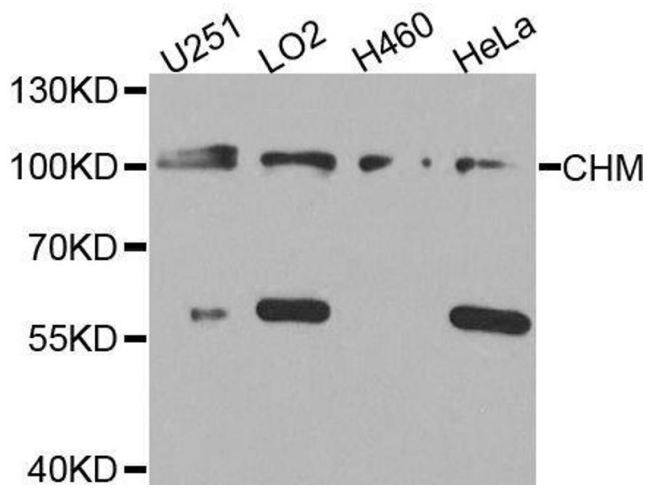
Target:	CHM
Alternative Name:	CHM (CHM Products)
Background:	<p>This gene encodes component A of the RAB geranylgeranyl transferase holoenzyme. In the dimeric holoenzyme, this subunit binds unprenylated Rab GTPases and then presents them to the catalytic Rab GGase subunit for the geranylgeranyl transfer reaction. Rab GTPases need to be geranylgeranylated on either one or two cysteine residues in their C-terminus to localize to the correct intracellular membrane. Mutations in this gene are a cause of choroideremia, also known as tapetochoroidal dystrophy (TCD). This X-linked disease is characterized by progressive dystrophy of the choroid, retinal pigment epithelium and retina. Alternatively spliced transcript variants have been found for this gene.,CHM,DXS540,GGTA,HSD-32,REP-1,TCD,Signal Transduction,Neuroscience,CHM</p>
Molecular Weight:	12 kDa/73 kDa
Gene ID:	1121
UniProt:	P24386
Pathways:	Sensory Perception of Sound

Application Details

Application Notes:	WB,1:500 - 1:2000
Comment:	HIGH QUALITY
Restrictions:	For Research Use only

Handling

Format:	Liquid
Buffer:	PBS with 0.02 % sodium azide,50 % glycerol, pH 7.3.
Preservative:	Sodium azide
Precaution of Use:	This product contains Sodium azide: a POISONOUS AND HAZARDOUS SUBSTANCE which should be handled by trained staff only.
Storage:	-20 °C
Storage Comment:	Store at -20°C. Avoid freeze / thaw cycles.



Western Blotting

Image 1. Western blot analysis of extracts of various cell lines, using CHM antibody.