



Datasheet for ABIN6138545
anti-CHMP2B antibody (AA 1-213)



[Go to Product page](#)

2 Images

Overview

Quantity:	100 µL
Target:	CHMP2B
Binding Specificity:	AA 1-213
Reactivity:	Human
Host:	Rabbit
Clonality:	Polyclonal
Conjugate:	This CHMP2B antibody is un-conjugated
Application:	Western Blotting (WB), Immunofluorescence (IF)

Product Details

Immunogen:	Recombinant fusion protein containing a sequence corresponding to amino acids 1-213 of human CHMP2B (NP_054762.2).
Sequence:	MASLFKKKTV DDVIKEQNRE LRGTQRAIIR DRAALEKQEK QLELEIKKMA KIGNKEACKV LAKQLVHLRK QKTRTFVSS KVTSMSQTQK VMNSQMKMAG AMSTTAKTMQ AVNKKMDPQK TLQTMQNFQK ENMKMEMTEE MINDTLDDIF DGSDDDEESQ DIVNQLDEI GIEISGKMAK APSAARSLPS ASTSKATISD EEIERQLKAL GVD
Isotype:	IgG
Cross-Reactivity:	Human, Mouse
Characteristics:	Polyclonal Antibodies
Purification:	Affinity purification

Target Details

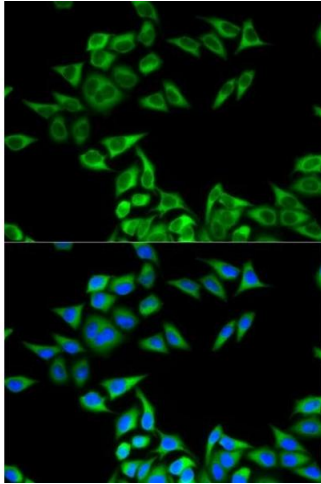
Target:	CHMP2B
Alternative Name:	CHMP2B (CHMP2B Products)
Background:	<p>This gene encodes a component of the heteromeric ESCRT-III complex (Endosomal Sorting Complex Required for Transport III) that functions in the recycling or degradation of cell surface receptors. ESCRT-III functions in the concentration and invagination of ubiquitinated endosomal cargos into intraluminal vesicles. The protein encoded by this gene is found as a monomer in the cytosol or as an oligomer in ESCRT-III complexes on endosomal membranes. It is expressed in neurons of all major regions of the brain. Mutations in this gene result in one form of familial frontotemporal lobar degeneration.,CHMP2B,ALS17,CHMP2.5,DMT1,VPS2-2,VPS2B,Signal Transduction,Cell Biology & Developmental Biology,Autophagy,Neuroscience,Neurodegenerative Diseases,Regulators,CHMP2B</p>
Molecular Weight:	19 kDa/23 kDa
Gene ID:	25978
UniProt:	Q9UQN3

Application Details

Application Notes:	WB,1:500 - 1:2000,IF,1:50 - 1:200
Restrictions:	For Research Use only

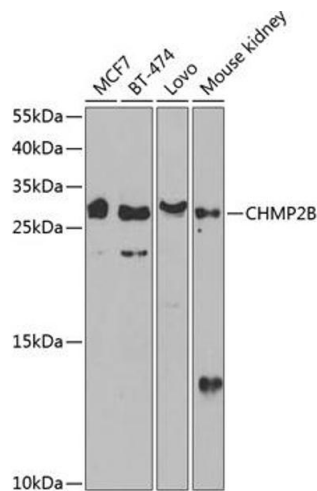
Handling

Format:	Liquid
Buffer:	PBS with 0.02 % sodium azide,50 % glycerol, pH 7.3.
Preservative:	Sodium azide
Precaution of Use:	This product contains Sodium azide: a POISONOUS AND HAZARDOUS SUBSTANCE which should be handled by trained staff only.
Storage:	-20 °C
Storage Comment:	Store at -20°C. Avoid freeze / thaw cycles.



Immunofluorescence

Image 1. Immunofluorescence analysis of MCF-7 cells using CHMP2B antibody (ABIN6131571, ABIN6138545, ABIN6138547 and ABIN6217398). Blue: DAPI for nuclear staining.



Western Blotting

Image 2. Western blot analysis of extracts of various cell lines, using CHMP2B antibody (ABIN6131571, ABIN6138545, ABIN6138547 and ABIN6217398) at 1:1000 dilution. Secondary antibody: HRP Goat Anti-Rabbit IgG (H+L) (ABIN1684268 and ABIN3020597) at 1:10000 dilution. Lysates/proteins: 25 µg per lane. Blocking buffer: 3 % nonfat dry milk in TBST. Detection: ECL Basic Kit (RM00020). Exposure time: 30s.