

Datasheet for ABIN6138556
anti-CHRAC1 antibody (AA 1-131)



[Go to Product page](#)

3 Images

Overview

Quantity:	100 µL
Target:	CHRAC1
Binding Specificity:	AA 1-131
Reactivity:	Human
Host:	Rabbit
Clonality:	Polyclonal
Conjugate:	This CHRAC1 antibody is un-conjugated
Application:	Western Blotting (WB), Immunofluorescence (IF)

Product Details

Immunogen:	Recombinant fusion protein containing a sequence corresponding to amino acids 1-131 of human CHRAC1 (NP_059140.1).
Sequence:	MADVVGKDK GGEQLISLP LSRIRVIMKS SPEVSSINQE ALVLTAKATE LFVQCLATYS YRHGSGKEKK VLTYSDLANT AQQSETFQFL ADILPKKILA SKYLKMLKEE KREEDENDN DNESDHDEAD S
Isotype:	IgG
Cross-Reactivity:	Human, Mouse
Characteristics:	Polyclonal Antibodies
Purification:	Affinity purification

Target Details

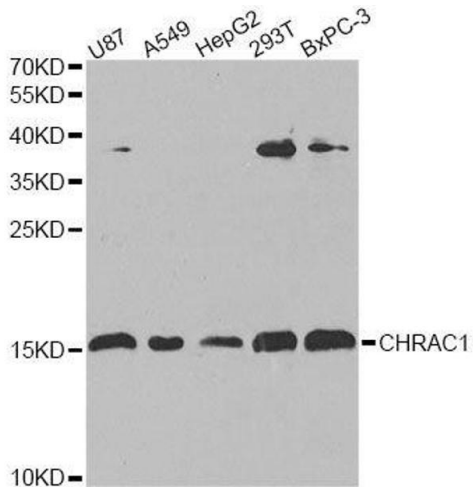
Target:	CHRAC1
Alternative Name:	CHRAC1 (CHRAC1 Products)
Background:	CHRAC1 is a histone-fold protein that interacts with other histone-fold proteins to bind DNA in a sequence-independent manner. These histone-fold protein dimers combine within larger enzymatic complexes for DNA transcription, replication, and packaging.[supplied by OMIM, Apr 2004],CHRAC1,CHARC1,CHARC15,CHRAC-1,CHRAC-15,CHRAC15,YCL1,Epigenetics & Nuclear Signaling,Transcription Factors,Chromatin Remodeling,CHRAC1
Molecular Weight:	14 kDa
Gene ID:	54108
UniProt:	Q9NRG0

Application Details

Application Notes:	WB,1:500 - 1:2000,IF,1:50 - 1:200
Comment:	HIGH QUALITY
Restrictions:	For Research Use only

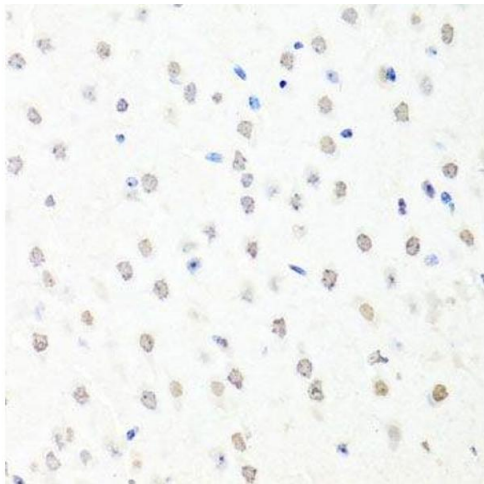
Handling

Format:	Liquid
Buffer:	PBS with 0.02 % sodium azide,50 % glycerol, pH 7.3.
Preservative:	Sodium azide
Precaution of Use:	This product contains Sodium azide: a POISONOUS AND HAZARDOUS SUBSTANCE which should be handled by trained staff only.
Storage:	-20 °C
Storage Comment:	Store at -20°C. Avoid freeze / thaw cycles.



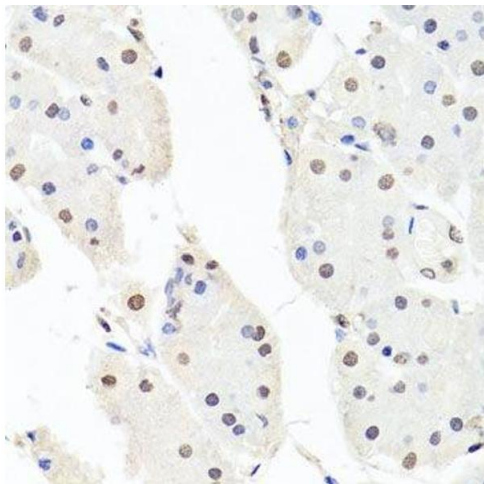
Western Blotting

Image 1. Western blot analysis of extracts of various cell lines, using CHRAC1 antibody.



Immunohistochemistry (Paraffin-embedded Sections)

Image 2. Immunohistochemistry of paraffin-embedded mouse brain using CHRAC1 antibody.



Immunohistochemistry (Paraffin-embedded Sections)

Image 3. Immunohistochemistry of paraffin-embedded human stomach using CHRAC1 antibody.