



[Go to Product page](#)

Datasheet for ABIN6138570
anti-CHRNA1 antibody (AA 105-220)

1 Image

Overview

Quantity:	100 µL
Target:	CHRNA1
Binding Specificity:	AA 105-220
Reactivity:	Human
Host:	Rabbit
Clonality:	Polyclonal
Conjugate:	This CHRNA1 antibody is un-conjugated
Application:	Western Blotting (WB)

Product Details

Immunogen:	Recombinant fusion protein containing a sequence corresponding to amino acids 105-220 of human CHRNA1 (NP_000070.1).
Sequence:	IWRPDLVLYN NADGDFAIVK FTKVLLQYTG HITWTPPAIF KSYCEIIVTH FPFDEQNCSM KLGWTYDGS VVAINPESDQ PDLSNFMESG EWWIKESRGW KHSVTYSCCP DTPYLD
Isotype:	IgG
Cross-Reactivity:	Human, Mouse
Characteristics:	Polyclonal Antibodies
Purification:	Affinity purification

Target Details

Target: CHRNA1

Alternative Name: CHRNA1 ([CHRNA1 Products](#))

Name:

Background: The muscle acetylcholine receptor consists of 5 subunits of 4 different types: 2 alpha subunits and 1 each of the beta, gamma, and delta subunits. This gene encodes an alpha subunit that plays a role in acetylcholine binding/channel gating. Alternatively spliced transcript variants encoding different isoforms have been identified.,CHRNA1,ACHRA,ACHRD,CHRNA,CMS1A,CMS1B,CMS2A,FCCMS,SCCMS,Neuroscience,Neurodegenerative Diseases,Amyloid Plaque and Neurofibrillary Tangle Formation in Alzheimer's Disease,CHRNA1

Molecular Weight: 51 kDa/54 kDa

Weight:

Gene ID: 1134

UniProt: [P02708](#)

Pathways: [Skeletal Muscle Fiber Development](#)

Application Details

Application Notes: WB,1:500 - 1:2000

Comment: HIGH QUALITY

Restrictions: For Research Use only

Handling

Format: Liquid

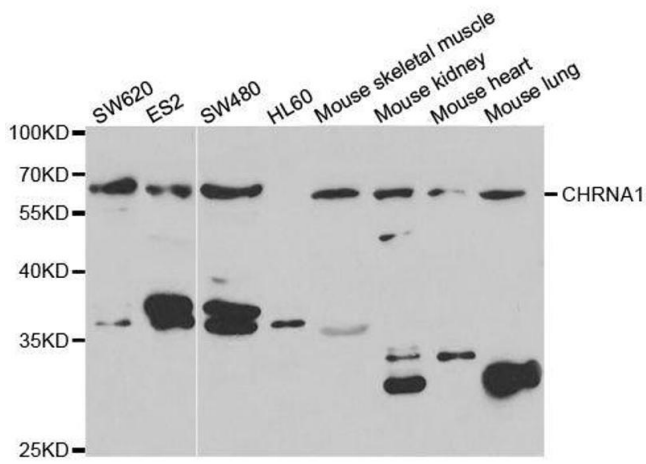
Buffer: PBS with 0.02 % sodium azide,50 % glycerol, pH 7.3.

Preservative: Sodium azide

Precaution of Use: This product contains Sodium azide: a POISONOUS AND HAZARDOUS SUBSTANCE which should be handled by trained staff only.

Storage: -20 °C

Storage Comment: Store at -20°C. Avoid freeze / thaw cycles.



Western Blotting

Image 1. Western blot analysis of extracts of various cell lines, using CHRNA1 antibody.