

Datasheet for ABIN6138583  
**anti-CHRNA7 antibody (AA 23-230)**[Go to Product page](#)

## 3 Images

## Overview

Quantity:	100 µL
Target:	CHRNA7
Binding Specificity:	AA 23-230
Reactivity:	Human
Host:	Rabbit
Clonality:	Polyclonal
Conjugate:	This CHRNA7 antibody is un-conjugated
Application:	Western Blotting (WB), Immunohistochemistry (IHC), Immunofluorescence (IF)

## Product Details

Immunogen:	Recombinant fusion protein containing a sequence corresponding to amino acids 23-230 of human CHRNA7 (NP_001177384.1).
Sequence:	ASPPSTPPWD PGHIPGASVR PAPGPVSLQG EFQRKLYKEL VKNYNPLERP VANDSQPLTV YFSLSLQIM DVDEKNQVLT TNIWLQMSWT DHYLLQWNVSE YPGVKTVRFP DGQIWKPDIL LYNSADERFD ATFHTNVLVN SSGHCQYLPP GIFKSSCYID VRWFPPFDVQH CKLKFGSWSY GGWSLDLQMQ EADISGYIPN GEWDLVGI
Isotype:	IgG
Cross-Reactivity:	Human, Mouse, Rat
Characteristics:	Polyclonal Antibodies
Purification:	Affinity purification

## Target Details

Target:	CHRNA7
Alternative Name:	CHRNA7 ( <a href="#">CHRNA7 Products</a> )
Background:	<p>The nicotinic acetylcholine receptors (nAChRs) are members of a superfamily of ligand-gated ion channels that mediate fast signal transmission at synapses. The nAChRs are thought to be hetero-pentamers composed of homologous subunits. The proposed structure for each subunit is a conserved N-terminal extracellular domain followed by three conserved transmembrane domains, a variable cytoplasmic loop, a fourth conserved transmembrane domain, and a short C-terminal extracellular region. The protein encoded by this gene forms a homo-oligomeric channel, displays marked permeability to calcium ions and is a major component of brain nicotinic receptors that are blocked by, and highly sensitive to, alpha-bungarotoxin. Once this receptor binds acetylcholine, it undergoes an extensive change in conformation that affects all subunits and leads to opening of an ion-conducting channel across the plasma membrane. This gene is located in a region identified as a major susceptibility locus for juvenile myoclonic epilepsy and a chromosomal location involved in the genetic transmission of schizophrenia. An evolutionarily recent partial duplication event in this region results in a hybrid containing sequence from this gene and a novel FAM7A gene.</p> <p>Alternative splicing results in multiple transcript variants.,CHRNA7,CHRNA7-2,NACHRA7,Cancer,Endocrine &amp; Metabolism,Neuroscience,Neurodegenerative Diseases,Amyloid Plaque and Neurofibrillary Tangle Formation in Alzheimer's Disease,Neurodegenerative Diseases Markers,Other Neurological disorders,Cardiovascular,Angiogenesis,CHRNA7</p>
Molecular Weight:	11 kDa/56 kDa/59 kDa
Gene ID:	1139
UniProt:	<a href="#">P36544</a>
Pathways:	<a href="#">Synaptic Membrane</a>

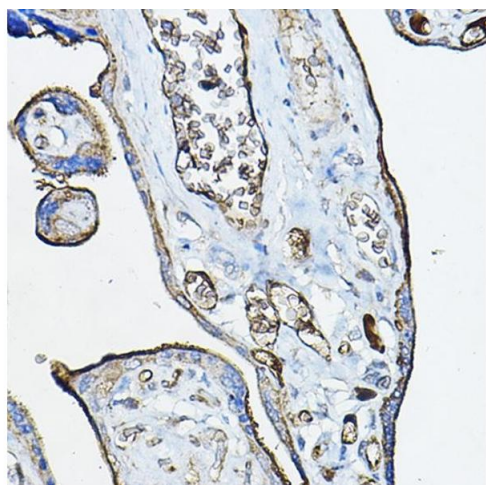
## Application Details

Application Notes:	WB,1:500 - 1:2000,IHC,1:50 - 1:200,IF,1:50 - 1:200
Comment:	HIGH QUALITY
Restrictions:	For Research Use only

## Handling

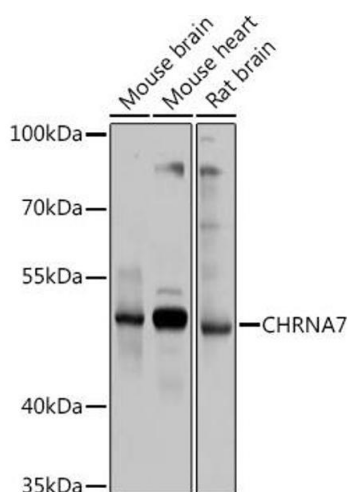
Format:	Liquid
Buffer:	PBS with 0.02 % sodium azide, 50 % glycerol, pH 7.3.
Preservative:	Sodium azide
Precaution of Use:	This product contains Sodium azide: a POISONOUS AND HAZARDOUS SUBSTANCE which should be handled by trained staff only.
Storage:	-20 °C
Storage Comment:	Store at -20°C. Avoid freeze / thaw cycles.

## Images



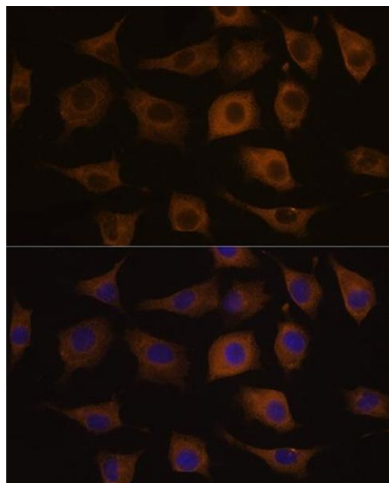
### Immunohistochemistry

**Image 1.** Immunohistochemistry of paraffin-embedded human placenta using CHRNa7 Rabbit pAb (ABIN6133256, ABIN6138583, ABIN6138584 and ABIN6218660) at dilution of 1:100 (40x lens). Perform microwave antigen retrieval with 10 mM PBS buffer pH 7.2 before commencing with IHC staining protocol.



### Western Blotting

**Image 2.** Western blot analysis of extracts of various cell lines, using CHRNa7 antibody (ABIN6133256, ABIN6138583, ABIN6138584 and ABIN6218660) at 1:1000 dilution. Secondary antibody: HRP Goat Anti-Rabbit IgG (H+L) (ABIN1684268 and ABIN3020597) at 1:10000 dilution. Lysates/proteins: 25 µg per lane. Blocking buffer: 3 % nonfat dry milk in TBST. Detection: ECL Basic Kit (RM00020). Exposure time: 5s.



#### Immunofluorescence

**Image 3.** Immunofluorescence analysis of L929 cells using CHRN antibody (ABIN6133256, ABIN6138583, ABIN6138584 and ABIN6218660) at dilution of 1:100. Blue: DAPI for nuclear staining.