



[Go to Product page](#)

Datasheet for ABIN6138587  
**anti-CHRNB1 antibody (AA 25-235)**

1 Image

Overview

Quantity:	100 µL
Target:	CHRNB1
Binding Specificity:	AA 25-235
Reactivity:	Human
Host:	Rabbit
Clonality:	Polyclonal
Conjugate:	This CHRNB1 antibody is un-conjugated
Application:	Western Blotting (WB)

Product Details

Immunogen:	Recombinant fusion protein containing a sequence corresponding to amino acids 25-235 of human CHRNB1 (NP_000738.2).
Sequence:	EAEGRLREKL FSGYDSSVRP AREVGDRVRV SVGLILAQLI SLNEKDEEMS TKVYLDLEWT DYRLSWDPAE HDGIDSLRIT AESVWLDPDVV LLNNNDGNFD VALDISVVVS SDGSVRWQPP GIYRSCSIQ VTYFPFDWQN CTMVFSSYSY DSSEVSLQTG LGPDGQGHQE IHIHEGTFIE NGQWEIIHKP SRLIQPPGDP RGGREGQRQE V
Isotype:	IgG
Cross-Reactivity:	Human, Mouse
Characteristics:	Polyclonal Antibodies
Purification:	Affinity purification

## Target Details

---

Target:	CHRNA1
Alternative Name:	CHRNA1 ( <a href="#">CHRNA1 Products</a> )
Background:	<p>The muscle acetylcholine receptor is composed of five subunits: two alpha subunits and one beta, one gamma, and one delta subunit. This gene encodes the beta subunit of the acetylcholine receptor. The acetylcholine receptor changes conformation upon acetylcholine binding leading to the opening of an ion-conducting channel across the plasma membrane. Mutations in this gene are associated with slow-channel congenital myasthenic syndrome.,CHRNA1,ACHRB,CHRNA,CMS1D,CMS2A,CMS2C,SCCMS,Neuroscience,Neurodegenerative Diseases,Amyloid Plaque and Neurofibrillary Tangle Formation in Alzheimer's Disease,CHRNA1</p>
Molecular Weight:	49 kDa/56 kDa
Gene ID:	1140
UniProt:	<a href="#">P11230</a>
Pathways:	<a href="#">Synaptic Membrane</a>

## Application Details

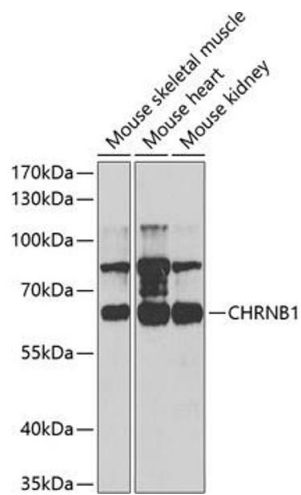
---

Application Notes:	WB,1:500 - 1:2000
Restrictions:	For Research Use only

## Handling

---

Format:	Liquid
Buffer:	PBS with 0.02 % sodium azide,50 % glycerol, pH 7.3.
Preservative:	Sodium azide
Precaution of Use:	This product contains Sodium azide: a POISONOUS AND HAZARDOUS SUBSTANCE which should be handled by trained staff only.
Storage:	-20 °C
Storage Comment:	Store at -20°C. Avoid freeze / thaw cycles.



### Western Blotting

**Image 1.** Western blot analysis of extracts of various cell lines, using CHRNB1 antibody (ABIN6131211, ABIN6138587, ABIN6138588 and ABIN6220911) at 1:1000 dilution. Secondary antibody: HRP Goat Anti-Rabbit IgG (H+L) (ABIN1684268 and ABIN3020597) at 1:10000 dilution. Lysates/proteins: 25  $\mu$ g per lane. Blocking buffer: 3% nonfat dry milk in TBST. Detection: ECL Basic Kit (RM00020). Exposure time: 90s.