



[Go to Product page](#)

Datasheet for ABIN6138590  
**anti-CHRN2 antibody (AA 340-430)**

1 Image

Overview

Quantity:	100 µL
Target:	CHRN2
Binding Specificity:	AA 340-430
Reactivity:	Human
Host:	Rabbit
Clonality:	Polyclonal
Conjugate:	This CHRN2 antibody is un-conjugated
Application:	Western Blotting (WB)

Product Details

Immunogen:	Recombinant fusion protein containing a sequence corresponding to amino acids 340-430 of human CHRN2 (NP_000739.1).
Sequence:	LEKLPALLFM QQPRHHCARQ RLRLRRRQRE REGAGALFFR EAPGADSCTC FVNRASVQGL AGAFGAEPAP VAGPGRSGEP CGCGLREAVD G
Isotype:	IgG
Cross-Reactivity:	Human, Mouse, Rat
Characteristics:	Polyclonal Antibodies
Purification:	Affinity purification

## Target Details

---

Target:	CHRNB2
Alternative Name:	CHRNB2 ( <a href="#">CHRNB2 Products</a> )
Background:	Neuronal acetylcholine receptors are homo- or heteropentameric complexes composed of homologous alpha and beta subunits. They belong to a superfamily of ligand-gated ion channels which allow the flow of sodium and potassium across the plasma membrane in response to ligands such as acetylcholine and nicotine. This gene encodes one of several beta subunits. Mutations in this gene are associated with autosomal dominant nocturnal frontal lobe epilepsy.,CHRNB2,EFNL3,nAChRB2,Cancer,Endocrine & Metabolism,Neuroscience,Neurodegenerative Diseases,Amyloid Plaque and Neurofibrillary Tangle Formation in Alzheimer's Disease,CHRNB2
Molecular Weight:	57 kDa
Gene ID:	1141
UniProt:	<a href="#">P17787</a>
Pathways:	<a href="#">Sensory Perception of Sound</a> , <a href="#">Feeding Behaviour</a>

## Application Details

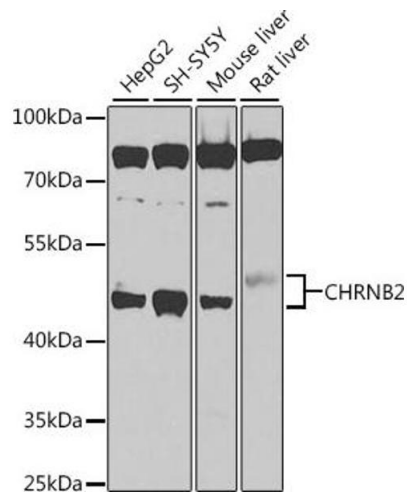
---

Application Notes:	WB,1:500 - 1:2000
Comment:	HIGH QUALITY
Restrictions:	For Research Use only

## Handling

---

Format:	Liquid
Buffer:	PBS with 0.02 % sodium azide,50 % glycerol, pH 7.3.
Preservative:	Sodium azide
Precaution of Use:	This product contains Sodium azide: a POISONOUS AND HAZARDOUS SUBSTANCE which should be handled by trained staff only.
Storage:	-20 °C
Storage Comment:	Store at -20°C. Avoid freeze / thaw cycles.



### Western Blotting

**Image 1.** Western blot analysis of extracts of various cell lines, using CHRN2 antibody (ABIN6131327, ABIN6138590, ABIN6138592 and ABIN6225110) at 1:1000 dilution. Secondary antibody: HRP Goat Anti-Rabbit IgG (H+L) (ABIN1684268 and ABIN3020597) at 1:10000 dilution. Lysates/proteins: 25 µg per lane. Blocking buffer: 3 % nonfat dry milk in TBST. Detection: ECL Basic Kit (RM00020). Exposure time: 90s.