



[Go to Product page](#)

Datasheet for ABIN6138647
anti-CKAP5 antibody (AA 1763-2032)

5 Images

Overview

Quantity:	100 µL
Target:	CKAP5
Binding Specificity:	AA 1763-2032
Reactivity:	Human
Host:	Rabbit
Clonality:	Polyclonal
Conjugate:	This CKAP5 antibody is un-conjugated
Application:	Western Blotting (WB), Immunoprecipitation (IP), Immunofluorescence (IF)

Product Details

Immunogen:	Recombinant fusion protein containing a sequence corresponding to amino acids 1763-2032 of human CKAP5 (NP_001008938.1).
Sequence:	LLHTLCKLKG PKILDHLTMI DNKNESELEA HLCRMMKHSM DQTGSKSDKE TEKGASRIDE KSSKAKVNDL LAEIFKKIGS KENTKEGLAE LYEYKKKYSD ADIEPFLKNS SQFFQSYVER GLRVIEMERE GKGRISTSTG ISPQMEVTCV PTPSTVSSI GNTNGEEVGP SVYLERLKIL RQRCGLDNTK QDDRPPLTSL LSKPAVPTVA SSTDMLHSLK SQLRESREQH QHSDLDSNQT HSSGTVTSSS STANIDDLKK RLERIKSSRK
Isotype:	IgG
Cross-Reactivity:	Human, Mouse, Rat
Characteristics:	Polyclonal Antibodies
Purification:	Affinity purification

Target Details

Target:	CKAP5
Alternative Name:	CKAP5 (CKAP5 Products)
Background:	<p>This gene encodes a cytoskeleton-associated protein which belongs to the TOG/XMAP215 family. The N-terminal half of this protein contains a microtubule-binding domain and the C-terminal half contains a KXGS motif for binding tubulin dimers. This protein has two distinct roles in spindle formation, it protects kinetochore microtubules from depolymerization and plays an essential role in centrosomal microtubule assembly. This protein may be necessary for the proper interaction of microtubules with the cell cortex for directional cell movement. It also plays a role in translation of the myelin basic protein (MBP) mRNA by interacting with heterogeneous nuclear ribonucleoprotein (hnRNP) A2, which associates with MBP. Alternatively spliced transcript variants encoding different isoforms have been identified.</p> <p>CKAP5,CHTOG,MSPS,TOG,TOGp,ch-TOG,Cancer,Signal Transduction,Cell Biology & Developmental Biology,Cell Cycle,Cytoskeleton,Microtubules,CKAP5</p>
Molecular Weight:	218 kDa/225 kDa/226 kDa
Gene ID:	9793
UniProt:	Q14008
Pathways:	M Phase

Application Details

Application Notes:	WB,1:500 - 1:2000,IF,1:50 - 1:200,IP,1:50 - 1:200
Comment:	HIGH QUALITY
Restrictions:	For Research Use only

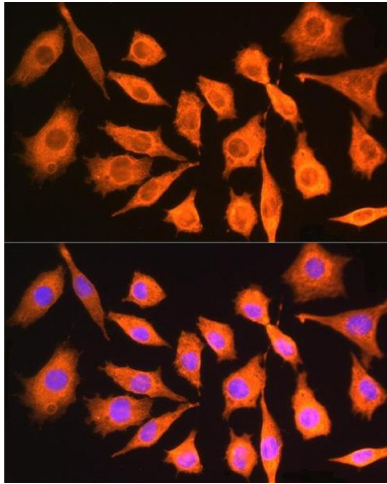
Handling

Format:	Liquid
Buffer:	PBS with 0.02 % sodium azide,50 % glycerol, pH 7.3.
Preservative:	Sodium azide
Precaution of Use:	This product contains Sodium azide: a POISONOUS AND HAZARDOUS SUBSTANCE which should be handled by trained staff only.
Storage:	-20 °C

Handling

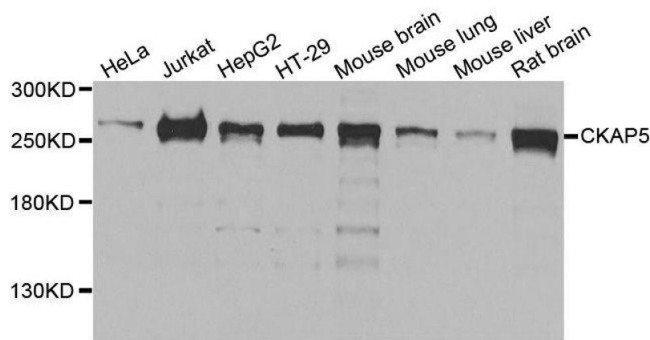
Storage Comment: Store at -20°C. Avoid freeze / thaw cycles.

Images



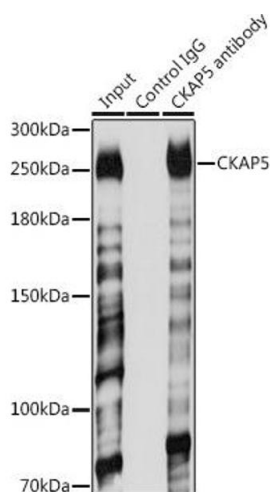
Immunofluorescence

Image 1. Immunofluorescence analysis of Mouse L929 cells using CK antibody (ABIN6127628, ABIN6138647, ABIN6138648 and ABIN6224627) at dilution of 1:100. Blue: DAPI for nuclear staining.



Western Blotting

Image 2. Western blot analysis of extracts of various cell lines, using CKAP5 antibody.



Immunoprecipitation

Image 3. Immunoprecipitation analysis of 200 µg extracts of Jurkat cells using 3 µg CK antibody (ABIN6127628, ABIN6138647, ABIN6138648 and ABIN6224627). Western blot was performed from the immunoprecipitate using CK antibody (ABIN6127628, ABIN6138647, ABIN6138648 and ABIN6224627) at a dilution of 1:1000.

Please check the [product details page](#) for more images. Overall 5 images are available for ABIN6138647.