

Datasheet for ABIN6138649  
**anti-CKB antibody (AA 182-381)**[Go to Product page](#)

## 1 Image

## Overview

Quantity:	100 µL
Target:	CKB
Binding Specificity:	AA 182-381
Reactivity:	Human
Host:	Rabbit
Clonality:	Polyclonal
Conjugate:	This CKB antibody is un-conjugated
Application:	Western Blotting (WB)

## Product Details

Immunogen:	Recombinant fusion protein containing a sequence corresponding to amino acids 182-381 of human Creatine kinase B type (Creatine kinase B type (CKB)) (NP_001814.2).
Sequence:	AEQQLIDDH FLFDKPV SPL LLASGMARDW PDARGIWHND NKTFVLVWVNE EDHLRVISMQ KGGNMKEVFT RFCTGLTQIE TLFKSKDYEF MWNPHLG YIL TCPSNLGTGL RAGVHIKLPN LGKHEKFSEV LKRLRLQKRG TGGVDTA AVG GVFDVSNADR LGFSEVELVQ MVVDGVKLLI EMEQRL EQGQ AIDDLMPAQK
Isotype:	IgG
Cross-Reactivity:	Human, Mouse, Rat
Characteristics:	Polyclonal Antibodies
Purification:	Affinity purification

## Target Details

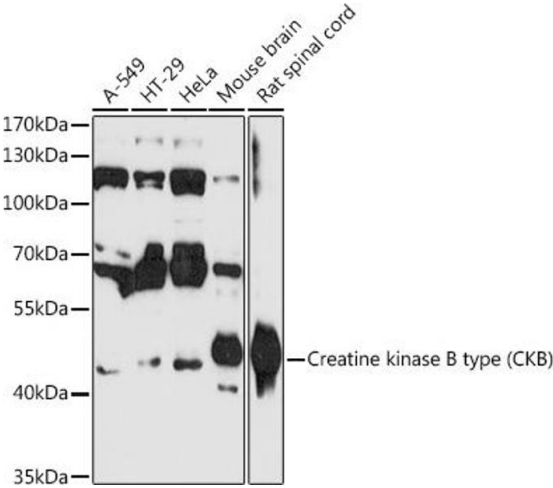
Target:	CKB
Alternative Name:	CKB ( <a href="#">CKB Products</a> )
Background:	<p>The protein encoded by this gene is a cytoplasmic enzyme involved in energy homeostasis. The encoded protein reversibly catalyzes the transfer of phosphate between ATP and various phosphogens such as creatine phosphate. It acts as a homodimer in brain as well as in other tissues, and as a heterodimer with a similar muscle isozyme in heart. The encoded protein is a member of the ATP:guanido phosphotransferase protein family. A pseudogene of this gene has been characterized.,CKB,B-CK,BCK,CKBB,HEL-211,HEL-S-29,Cancer,Signal Transduction,Kinase,Endocrine &amp; Metabolism,Neuroscience,CKB</p>
Molecular Weight:	42 kDa
Gene ID:	1152
UniProt:	<a href="#">P12277</a>

## Application Details

Application Notes:	WB,1:1000 - 1:2000
Restrictions:	For Research Use only

## Handling

Format:	Liquid
Buffer:	PBS with 0.02 % sodium azide,50 % glycerol, pH 7.3.
Preservative:	Sodium azide
Precaution of Use:	This product contains Sodium azide: a POISONOUS AND HAZARDOUS SUBSTANCE which should be handled by trained staff only.
Storage:	-20 °C
Storage Comment:	Store at -20°C. Avoid freeze / thaw cycles.



### Western Blotting

**Image 1.** Western blot analysis of extracts of various cell lines, using Creatine kinase B type (Creatine kinase B type (CKB)) antibody (ABIN6127630, ABIN6138649, ABIN6138651 and ABIN6216334) at 1:3000 dilution. Secondary antibody: HRP Goat Anti-Rabbit IgG (H+L) (ABIN1684268 and ABIN3020597) at 1:10000 dilution. Lysates/proteins: 25 µg per lane. Blocking buffer: 3 % nonfat dry milk in TBST. Detection: ECL Basic Kit (RM00020). Exposure time: 60s.