



[Go to Product page](#)

Datasheet for ABIN6138661  
**anti-CLCN1 antibody (AA 779-988)**

3 Images

Overview

Quantity:	100 µL
Target:	CLCN1
Binding Specificity:	AA 779-988
Reactivity:	Human
Host:	Rabbit
Clonality:	Polyclonal
Conjugate:	This CLCN1 antibody is un-conjugated
Application:	Western Blotting (WB), Immunohistochemistry (IHC)

Product Details

Immunogen:	Recombinant fusion protein containing a sequence corresponding to amino acids 779-988 of human CLCN1 (NP_000074.2).
Sequence:	ARPTKKKTTQ DSTDLVDNMS PEEIEAWEQE QLSQPVCFDS CCIDQSPFQL VEQTTLHKTH TLFSLGLHL AYTSMGKLR GVLALEELQK AIEGHTKSGV QLRPPLASFR NTTSTRKSTG APPSSAENWN LPEDRPGATG TGDVIAASPE TPVPSPSPEP PLSLAPGKVE GELEELVEL SPGLEEELAD ILQGPSLRST DEEDEDELIL
Isotype:	IgG
Cross-Reactivity:	Human, Mouse, Rat
Characteristics:	Polyclonal Antibodies
Purification:	Affinity purification

## Target Details

---

Target:	CLCN1
Alternative Name:	CLCN1 ( <a href="#">CLCN1 Products</a> )
Background:	<p>The CLCN family of voltage-dependent chloride channel genes comprises nine members (CLCN1-7, Ka and Kb) which demonstrate quite diverse functional characteristics while sharing significant sequence homology. The protein encoded by this gene regulates the electric excitability of the skeletal muscle membrane. Mutations in this gene cause two forms of inherited human muscle disorders: recessive generalized myotonia congenita (Becker) and dominant myotonia (Thomsen). Alternative splicing results in multiple transcript variants.,CLCN1,CLC1,Signal Transduction,Endocrine &amp; Metabolism,Neuroscience,CLCN1</p>
Molecular Weight:	108 kDa
Gene ID:	1180
UniProt:	<a href="#">P35523</a>

## Application Details

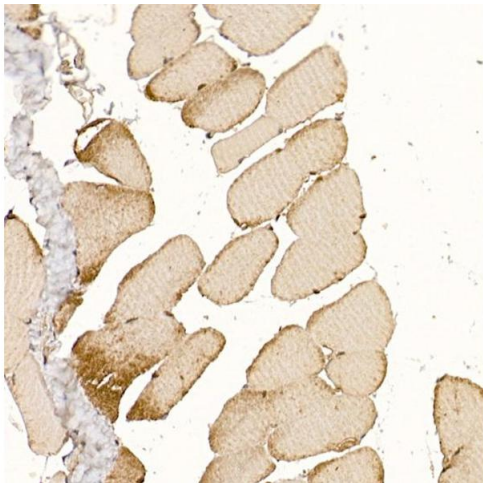
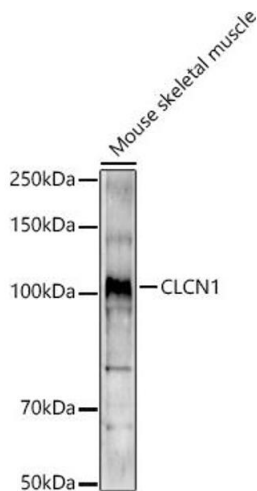
---

Application Notes:	WB,1:500 - 1:2000,IHC,1:50 - 1:200
Comment:	HIGH QUALITY
Restrictions:	For Research Use only

## Handling

---

Format:	Liquid
Buffer:	PBS with 0.02 % sodium azide,50 % glycerol, pH 7.3.
Preservative:	Sodium azide
Precaution of Use:	This product contains Sodium azide: a POISONOUS AND HAZARDOUS SUBSTANCE which should be handled by trained staff only.
Storage:	-20 °C
Storage Comment:	Store at -20°C. Avoid freeze / thaw cycles.



### Immunohistochemistry

**Image 1.** Immunohistochemistry of paraffin-embedded mouse skeletal muscle using CLCN1 Rabbit pAb (ABIN6130939, ABIN6138661, ABIN6138662 and ABIN6221409) at dilution of 1:200 (40x lens). Perform high pressure antigen retrieval with 10 mM citrate buffer pH 6.0 before commencing with IHC staining protocol.

### Western Blotting

**Image 2.** Western blot analysis of extracts of Mouse skeletal muscle, using CLCN1 antibody (ABIN6130939, ABIN6138661, ABIN6138662 and ABIN6221409) at 1:1000 dilution. Secondary antibody: HRP Goat Anti-Rabbit IgG (H+L) (ABIN1684268 and ABIN3020597) at 1:10000 dilution. Lysates/proteins: 25 µg per lane. Blocking buffer: 3 % nonfat dry milk in TBST. Detection: ECL Enhanced Kit (RM00021). Exposure time: 180s.

### Immunohistochemistry

**Image 3.** Immunohistochemistry of paraffin-embedded rat skeletal muscle using CLCN1 Rabbit pAb (ABIN6130939, ABIN6138661, ABIN6138662 and ABIN6221409) at dilution of 1:200 (40x lens). Perform high pressure antigen retrieval with 10 mM citrate buffer pH 6.0 before commencing with IHC staining protocol.