



[Go to Product page](#)

Datasheet for ABIN6138670
anti-CLCN7 antibody (AA 626-805)

1 Image

Overview

Quantity:	100 µL
Target:	CLCN7
Binding Specificity:	AA 626-805
Reactivity:	Human
Host:	Rabbit
Clonality:	Polyclonal
Conjugate:	This CLCN7 antibody is un-conjugated
Application:	Western Blotting (WB)

Product Details

Immunogen:	Recombinant fusion protein containing a sequence corresponding to amino acids 626-805 of human CLCN7 (NP_001278.1).
Sequence:	TAREVMSTPV TCLRRREKVG VIVDVLSDTA SNHNGFPVVE HADDTQPARL QGLILRSQLI VLLKHKVFVE RSNLGLVQRR LRLKDFRDAY PRFPPIQSIH VSQDERECTM DLSEFMNPSP YTVPQEASLP RVFKLFRALG LRHLVVVDNR NQVVGLVTRK DLARYRLGKR GLEELSLAQT
Isotype:	IgG
Cross-Reactivity:	Human, Mouse, Rat
Characteristics:	Polyclonal Antibodies
Purification:	Affinity purification

Target Details

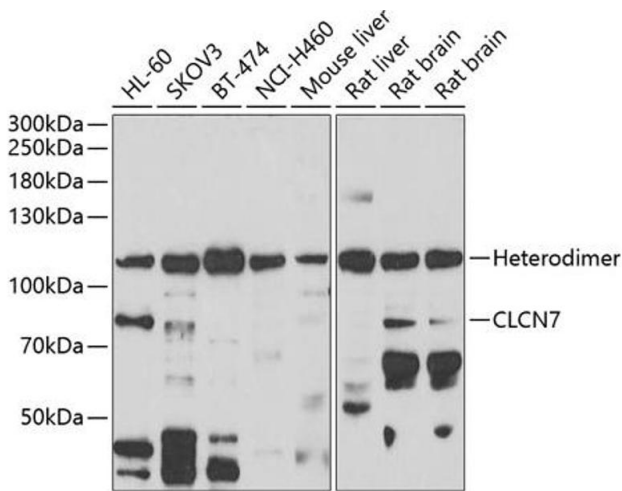
Target:	CLCN7
Alternative Name:	CLCN7 (CLCN7 Products)
Background:	<p>The product of this gene belongs to the CLC chloride channel family of proteins. Chloride channels play important roles in the plasma membrane and in intracellular organelles. This gene encodes chloride channel 7. Defects in this gene are the cause of osteopetrosis autosomal recessive type 4 (OPTB4), also called infantile malignant osteopetrosis type 2 as well as the cause of autosomal dominant osteopetrosis type 2 (OPTA2), also called autosomal dominant Albers-Schonberg disease or marble disease autosomal dominant. Osteopetrosis is a rare genetic disease characterized by abnormally dense bone, due to defective resorption of immature bone. OPTA2 is the most common form of osteopetrosis, occurring in adolescence or adulthood.,CLCN7,CLC-7,CLC7,OPTA2,OPTB4,PPP1R63,Cancer,Signal Transduction,Endocrine & Metabolism,CLCN7</p>
Molecular Weight:	86 kDa/88 kDa
Gene ID:	1186
UniProt:	P51798

Application Details

Application Notes:	WB,1:500 - 1:2000
Restrictions:	For Research Use only

Handling

Format:	Liquid
Buffer:	PBS with 0.02 % sodium azide,50 % glycerol, pH 7.3.
Preservative:	Sodium azide
Precaution of Use:	This product contains Sodium azide: a POISONOUS AND HAZARDOUS SUBSTANCE which should be handled by trained staff only.
Storage:	-20 °C
Storage Comment:	Store at -20°C. Avoid freeze / thaw cycles.



Western Blotting

Image 1. Western blot analysis of extracts of various cell lines, using CLCN7 antibody (ABIN6133268, ABIN6138670, ABIN6138672 and ABIN6222613) at 1:1000 dilution. Secondary antibody: HRP Goat Anti-Rabbit IgG (H+L) (ABIN1684268 and ABIN3020597) at 1:10000 dilution. Lysates/proteins: 25 µg per lane. Blocking buffer: 3 % nonfat dry milk in TBST. Detection: ECL Enhanced Kit (RM00021). Exposure time: 90s.