

Datasheet for ABIN6138675  
**anti-Claudin 11 antibody (AA 1-100)**[Go to Product page](#)

## 1 Image

## Overview

Quantity:	100 µL
Target:	Claudin 11 (CLDN11)
Binding Specificity:	AA 1-100
Reactivity:	Human
Host:	Rabbit
Clonality:	Polyclonal
Conjugate:	This Claudin 11 antibody is un-conjugated
Application:	Western Blotting (WB), Immunohistochemistry (IHC)

## Product Details

Immunogen:	A synthetic peptide corresponding to a sequence within amino acids 1-100 of human CLDN11 (NP_005593.2).
Sequence:	MVATCLQVVG FVTSFVGWIG VIVTTSTNDW VVTCGYTIPT CRKLDELGSK GLWADCVMAT GLYHCKPLVD ILILPGYVQA CRALMIAASV LGLPAILLLL
Isotype:	IgG
Cross-Reactivity:	Human, Mouse, Rat
Characteristics:	Polyclonal Antibodies
Purification:	Affinity purification

## Target Details

Target:	Claudin 11 (CLDN11)
Alternative Name:	CLDN11 ( <a href="#">CLDN11 Products</a> )
Background:	<p>This gene encodes a member of the claudin family. Claudins are integral membrane proteins and components of tight junction strands. Tight junction strands serve as a physical barrier to prevent solutes and water from passing freely through the paracellular space between epithelial or endothelial cell sheets, and also play critical roles in maintaining cell polarity and signal transductions. The protein encoded by this gene is a major component of central nervous system (CNS) myelin and plays an important role in regulating proliferation and migration of oligodendrocytes. Mouse studies showed that the gene deficiency results in deafness and loss of the Sertoli cell epithelial phenotype in the testis. This protein is a tight junction protein at the human blood-testis barrier (BTB), and the BTB disruption is related to a dysfunction of this gene. Alternatively spliced transcript variants encoding different isoforms have been identified.,CLDN11,OSP,OTM,Immunology &amp; Inflammation,Neuroscience,Cell Type Marker,Neurodegenerative Diseases,Oligodendrocyte marker,CLDN11</p>
Molecular Weight:	21 kDa
Gene ID:	5010
UniProt:	<a href="#">O75508</a>
Pathways:	<a href="#">Hepatitis C</a>

## Application Details

Application Notes:	WB,1:500 - 1:2000,IHC,1:50 - 1:100
Comment:	HIGH QUALITY
Restrictions:	For Research Use only

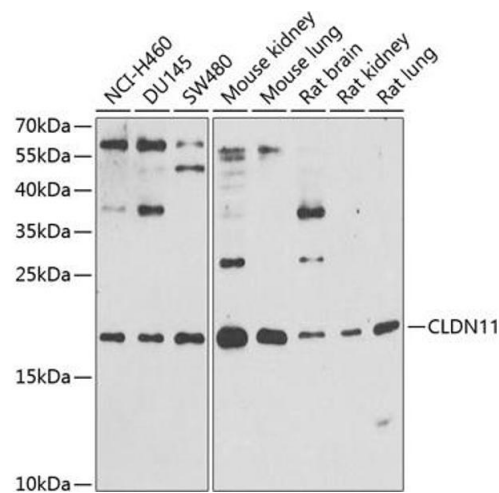
## Handling

Format:	Liquid
Buffer:	PBS with 0.02 % sodium azide,50 % glycerol, pH 7.3.
Preservative:	Sodium azide
Precaution of Use:	This product contains Sodium azide: a POISONOUS AND HAZARDOUS SUBSTANCE which should be handled by trained staff only.
Storage:	-20 °C

Handling

Storage Comment: Store at -20°C. Avoid freeze / thaw cycles.

Images



Western Blotting

**Image 1.** Western blot analysis of extracts of various cell lines, using CLDN11 antibody (ABIN6133643, ABIN6138675, ABIN6138676 and ABIN6216120) at 1:1000 dilution. Secondary antibody: HRP Goat Anti-Rabbit IgG (H+L) (ABIN1684268 and ABIN3020597) at 1:10000 dilution. Lysates/proteins: 25 µg per lane. Blocking buffer: 3 % nonfat dry milk in TBST. Detection: ECL Enhanced Kit (RM00021). Exposure time: 90s.