



[Go to Product page](#)

Datasheet for ABIN6138707
anti-CLEC2D antibody (AA 60-154)

1 Image

Overview

Quantity:	100 µL
Target:	CLEC2D
Binding Specificity:	AA 60-154
Reactivity:	Human
Host:	Rabbit
Clonality:	Polyclonal
Conjugate:	This CLEC2D antibody is un-conjugated
Application:	Western Blotting (WB)

Product Details

Immunogen:	Recombinant fusion protein containing a sequence corresponding to amino acids 60-154 of human CLEC2D (NP_037401.1).
Sequence:	RANCHQEPSV CLQAACPESW IGFQRKCFYF SDDTKNWTSS QRFCDSQDAD LAQVESFQEL NFLRLRYKGPS DHWIGLSREQ GQPWKWINGT EWTRQ
Isotype:	IgG
Cross-Reactivity:	Human, Mouse
Characteristics:	Polyclonal Antibodies
Purification:	Affinity purification

Target Details

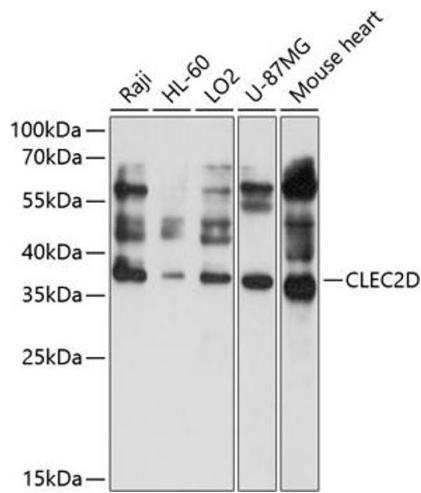
Target:	CLEC2D
Alternative Name:	CLEC2D (CLEC2D Products)
Background:	This gene encodes a member of the natural killer cell receptor C-type lectin family. The encoded protein inhibits osteoclast formation and contains a transmembrane domain near the N-terminus as well as the C-type lectin-like extracellular domain. Several alternatively spliced transcript variants have been identified for this gene.,CLEC2D,CLAX,LLT1,OCIL,Immunology & Inflammation,CLEC2D
Molecular Weight:	10 kDa/14 kDa/17 kDa/21 kDa/22 kDa
Gene ID:	29121
UniProt:	Q9UHP7
Pathways:	Regulation of Leukocyte Mediated Immunity

Application Details

Application Notes:	WB,1:500 - 1:2000
Restrictions:	For Research Use only

Handling

Format:	Liquid
Buffer:	PBS with 0.02 % sodium azide,50 % glycerol, pH 7.3.
Preservative:	Sodium azide
Precaution of Use:	This product contains Sodium azide: a POISONOUS AND HAZARDOUS SUBSTANCE which should be handled by trained staff only.
Storage:	-20 °C
Storage Comment:	Store at -20°C. Avoid freeze / thaw cycles.



Western Blotting

Image 1. Western blot analysis of extracts of various cell lines, using CLEC2D antibody (ABIN6130113, ABIN6138707, ABIN6138708 and ABIN6214667) at 1:1000 dilution. Secondary antibody: HRP Goat Anti-Rabbit IgG (H+L) (ABIN1684268 and ABIN3020597) at 1:10000 dilution. Lysates/proteins: 25 μ g per lane. Blocking buffer: 3% nonfat dry milk in TBST. Detection: ECL Basic Kit (RM00020). Exposure time: 30s.