

Datasheet for ABIN6138723
anti-CLIC4 antibody (AA 1-253)



[Go to Product page](#)

5 Images

Overview

| | |
|----------------------|--|
| Quantity: | 100 µL |
| Target: | CLIC4 |
| Binding Specificity: | AA 1-253 |
| Reactivity: | Human |
| Host: | Rabbit |
| Clonality: | Polyclonal |
| Conjugate: | This CLIC4 antibody is un-conjugated |
| Application: | Western Blotting (WB), Immunohistochemistry (IHC), Immunofluorescence (IF) |

Product Details

| | |
|-------------------|---|
| Immunogen: | Recombinant fusion protein containing a sequence corresponding to amino acids 1-253 of human CLIC4 (NP_039234.1). |
| Sequence: | MALSMPLNGL KEEDKEPLIE LFKAGSDGE SIGNCPFSQR LFMLWLKGV VFSVTTVDLK RKPADLQNLA PGTHPPFITF NSEVKTDVNK IEEFLEEVLC PPKYLKLSPK HPESNTAGMD IFAKFSAYIK NSRPEANEAL ERGLLKTLLQK LDEYLN SPLP DEIDENS MED IKFSTRKFLD GNEMTLADCN LLPKLHIVKV VAKKYRNFDI PKEMTGIWRY LTNAYS RDEF TNTCPSDKEV EIAYS DVAKR LTK |
| Isotype: | IgG |
| Cross-Reactivity: | Human, Mouse, Rat |
| Characteristics: | Polyclonal Antibodies |
| Purification: | Affinity purification |

Target Details

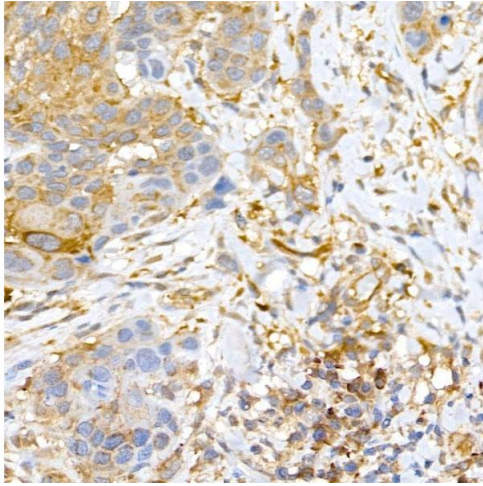
| | |
|-------------------|--|
| Target: | CLIC4 |
| Alternative Name: | CLIC4 (CLIC4 Products) |
| Background: | Chloride channels are a diverse group of proteins that regulate fundamental cellular processes including stabilization of cell membrane potential, transepithelial transport, maintenance of intracellular pH , and regulation of cell volume. Chloride intracellular channel 4 (CLIC4) protein, encoded by the CLIC4 gene, is a member of the p64 family, the gene is expressed in many tissues and exhibits a intracellular vesicular pattern in Panc-1 cells (pancreatic cancer cells),CLIC4,CLIC4L,H1,MTCLIC,huH1,p64H1,Epigenetics & Nuclear Signaling,Cancer,Signal Transduction,Cell Biology & Developmental Biology,Apoptosis,Cell Cycle,Endocrine & Metabolism,Mitochondrial metabolism,Mitochondrial markers,CLIC4 |
| Molecular Weight: | 28 kDa |
| Gene ID: | 25932 |
| UniProt: | Q9Y696 |

Application Details

| | |
|--------------------|--|
| Application Notes: | WB,1:500 - 1:2000,IHC,1:50 - 1:200,IF,1:50 - 1:100 |
| Comment: | HIGH QUALITY |
| Restrictions: | For Research Use only |

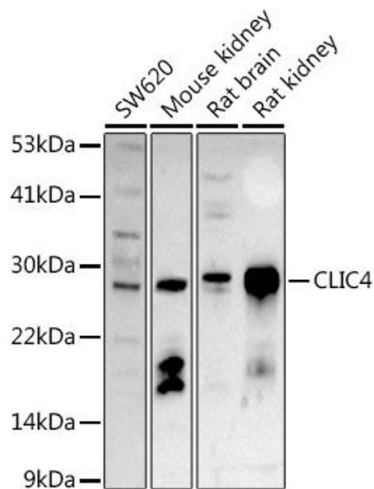
Handling

| | |
|--------------------|--|
| Format: | Liquid |
| Buffer: | PBS with 0.02 % sodium azide,50 % glycerol, pH 7.3. |
| Preservative: | Sodium azide |
| Precaution of Use: | This product contains Sodium azide: a POISONOUS AND HAZARDOUS SUBSTANCE which should be handled by trained staff only. |
| Storage: | -20 °C |
| Storage Comment: | Store at -20°C. Avoid freeze / thaw cycles. |



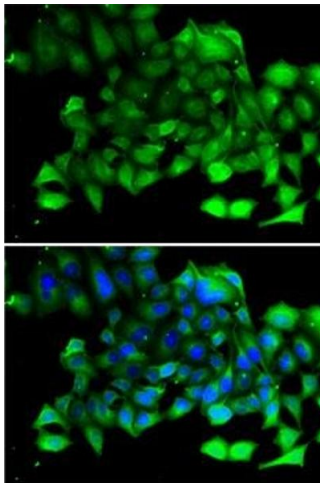
Immunohistochemistry

Image 1. Immunohistochemistry of paraffin-embedded human esophageal cancer using CLIC4 Rabbit pAb (ABIN6127638, ABIN6138723, ABIN6138724 and ABIN6222890) at dilution of 1:50 (40x lens). Perform high pressure antigen retrieval with 10 mM citrate buffer pH 6.0 before commencing with IHC staining protocol.



Western Blotting

Image 2. Western blot analysis of extracts of various cell lines, using CLIC4 antibody (ABIN6127638, ABIN6138723, ABIN6138724 and ABIN6222890) at 1:500 dilution. Secondary antibody: HRP Goat Anti-Rabbit IgG (H+L) (ABIN1684268 and ABIN3020597) at 1:10000 dilution. Lysates/proteins: 25 µg per lane. Blocking buffer: 3 % nonfat dry milk in TBST. Detection: ECL Basic Kit (RM00020). Exposure time: 180s.



Immunofluorescence

Image 3. Immunofluorescence analysis of A-549 cells using CLIC4 antibody (ABIN6127638, ABIN6138723, ABIN6138724 and ABIN6222890). Blue: DAPI for nuclear staining.

Please check the [product details page](#) for more images. Overall 5 images are available for ABIN6138723.