

Datasheet for ABIN6138752

anti-Clathrin Heavy Chain (CLTC) (AA 1451-1675) antibody[Go to Product page](#)**2** Images

Overview

Quantity:	100 µL
Target:	Clathrin Heavy Chain (CLTC)
Binding Specificity:	AA 1451-1675
Reactivity:	Human
Host:	Rabbit
Clonality:	Polyclonal
Conjugate:	Un-conjugated
Application:	Western Blotting (WB), Immunofluorescence (IF)

Product Details

Immunogen:	Recombinant fusion protein containing a sequence corresponding to amino acids 1451-1675 of human Clathrin heavy chain (NP_004850.1).
Sequence:	YLRVQNHNN KSVNESLNNL FITEEDYQAL RTSIDAYDNF DNISLAQRLE KHELIEFRRI AAYLFKGNRR WKQSVELCKK DSLYKDAMQY AYESKDETELA EELLQWFLQE EKRECFGACL FTCYDLLRPD VVLETAWRHN IMDFAMPYFI QVMKEYLTKV DKLDASESLR KEEEQATETQ PIVYGQPQLM LTAGPSVAVP PQAPFGYGYT APPYGQPQPG FGYSM
Isotype:	IgG
Cross-Reactivity:	Human, Mouse, Rat
Characteristics:	Polyclonal Antibodies
Purification:	Affinity purification

Target Details

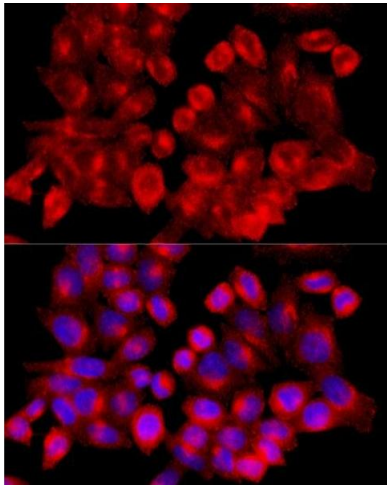
Target:	Clathrin Heavy Chain (CLTC)
Alternative Name:	CLTC (CLTC Products)
Background:	Clathrin is a major protein component of the cytoplasmic face of intracellular organelles, called coated vesicles and coated pits. These specialized organelles are involved in the intracellular trafficking of receptors and endocytosis of a variety of macromolecules. The basic subunit of the clathrin coat is composed of three heavy chains and three light chains.,CLTC,CHC,CHC17,CLH-17,CLTCL2,Hc,Signal Transduction,Cell Biology & Developmental Biology,Cell Adhesion,Gap Junctions,Immunology & Inflammation,B Cell Receptor Signaling Pathway,Neuroscience,Neurodegenerative Diseases,CLTC
Molecular Weight:	187 kDa/191 kDa
Gene ID:	1213
UniProt:	Q00610

Application Details

Application Notes:	WB,1:500 - 1:2000,IF,1:50 - 1:200
Comment:	HIGH QUALITY
Restrictions:	For Research Use only

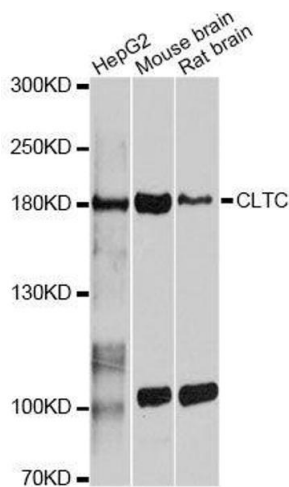
Handling

Format:	Liquid
Buffer:	PBS with 0.02 % sodium azide,50 % glycerol, pH 7.3.
Preservative:	Sodium azide
Precaution of Use:	This product contains Sodium azide: a POISONOUS AND HAZARDOUS SUBSTANCE which should be handled by trained staff only.
Storage:	-20 °C
Storage Comment:	Store at -20°C. Avoid freeze / thaw cycles.



Immunofluorescence

Image 1. Immunofluorescence analysis of HeLa cells using Clathrin heavy chain antibody (ABIN6131586, ABIN6138752, ABIN6138754 and ABIN6216041) at dilution of 1:100 (40x lens). Blue: DAPI for nuclear staining.



Western Blotting

Image 2. Western blot analysis of extracts of various cell lines, using CLTC antibody.