



[Go to Product page](#)

Datasheet for ABIN6138760
anti-CLUH antibody (AA 1120-1309)

6 Images

Overview

Quantity:	100 µL
Target:	CLUH
Binding Specificity:	AA 1120-1309
Reactivity:	Human
Host:	Rabbit
Clonality:	Polyclonal
Conjugate:	This CLUH antibody is un-conjugated
Application:	Western Blotting (WB), Immunohistochemistry (IHC), Immunofluorescence (IF)

Product Details

Immunogen:	Recombinant fusion protein containing a sequence corresponding to amino acids 1120-1309 of human CLUH (NP_056044.3).
Sequence:	YDLSLRFLEN ALAVSTKYHG PKALKVALSH HLVARVYESK AEFRSALQHE KEGYTIYKTQ LGEDHEKTKE SSEYLKCLTQ QAVALQRTMN EIYRNGSSAN IPPLKFTAPS MASVLEQLNV INGILFIPLS QKDLENLKA E VARRHQLQEA SRNRDRAEEP MATEPAPAGA PGDLGSQPPA AKDPSPSVQG
Isotype:	IgG
Cross-Reactivity:	Human, Mouse
Characteristics:	Polyclonal Antibodies
Purification:	Affinity purification

Target Details

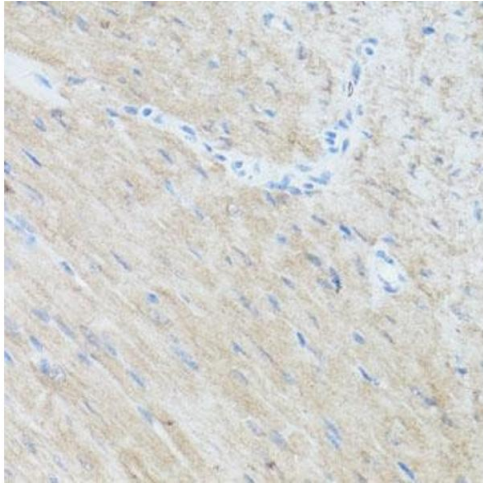
Target:	CLUH
Alternative Name:	CLUH (CLUH Products)
Background:	MRNA-binding protein involved in proper cytoplasmic distribution of mitochondria. Specifically binds mRNAs of nuclear-encoded mitochondrial proteins in the cytoplasm and regulates transport or translation of these transcripts close to mitochondria, playing a role in mitochondrial biogenesis.,CLUH,CLU1,KIAA0664,CLUH
Molecular Weight:	146 kDa
Gene ID:	23277
UniProt:	075153

Application Details

Application Notes:	WB,1:1000 - 1:4000,IHC,1:50 - 1:200,IF,1:50 - 1:200
Comment:	HIGH QUALITY
Restrictions:	For Research Use only

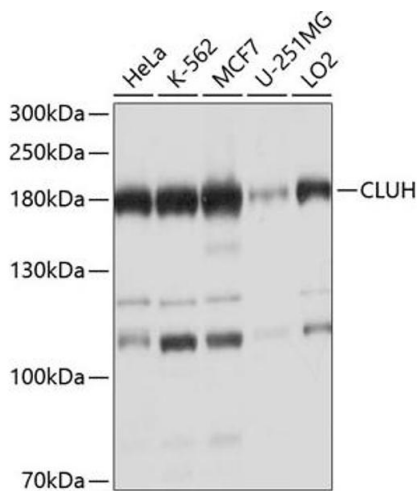
Handling

Format:	Liquid
Buffer:	PBS with 0.02 % sodium azide,50 % glycerol, pH 7.3.
Preservative:	Sodium azide
Precaution of Use:	This product contains Sodium azide: a POISONOUS AND HAZARDOUS SUBSTANCE which should be handled by trained staff only.
Storage:	-20 °C
Storage Comment:	Store at -20°C. Avoid freeze / thaw cycles.



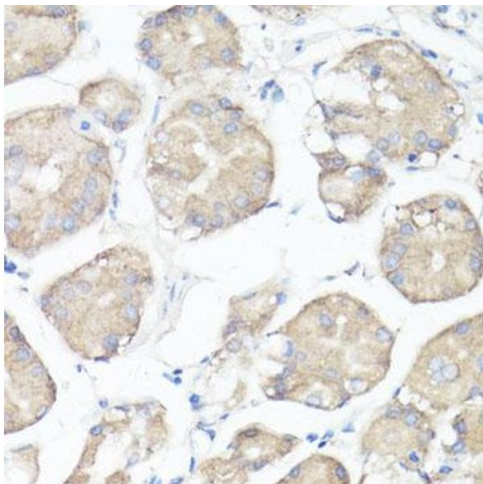
Immunohistochemistry

Image 1. Immunohistochemistry of paraffin-embedded mouse heart using CLUH antibody at dilution of 1:100 (40x lens). Perform microwave antigen retrieval with 10 mM PBS buffer pH 7.2 before commencing with IHC staining protocol.



Western Blotting

Image 2. Western blot analysis of extracts of various cell lines, using CLUH antibody at 1:1000 dilution. Secondary antibody: HRP Goat Anti-Rabbit IgG (H+L) (ABIN1684268 and ABIN3020597) at 1:10000 dilution. Lysates/proteins: 25 µg per lane. Blocking buffer: 3% nonfat dry milk in TBST. Detection: ECL Basic Kit (RM00020). Exposure time: 15s.



Immunohistochemistry

Image 3. Immunohistochemistry of paraffin-embedded human stomach using CLUH antibody at dilution of 1:100 (40x lens). Perform microwave antigen retrieval with 10 mM PBS buffer pH 7.2 before commencing with IHC staining protocol.

Please check the [product details page](#) for more images. Overall 6 images are available for ABIN6138760.