

Datasheet for ABIN6138791  
**anti-CNPY2/MSAP antibody (AA 1-182)**



[Go to Product page](#)

2 Images

## Overview

Quantity:	100 µL
Target:	CNPY2/MSAP (CNPY2)
Binding Specificity:	AA 1-182
Reactivity:	Human
Host:	Rabbit
Clonality:	Polyclonal
Conjugate:	This CNPY2/MSAP antibody is un-conjugated
Application:	Western Blotting (WB), Immunohistochemistry (IHC)

## Product Details

Immunogen:	Recombinant fusion protein containing a sequence corresponding to amino acids 1-182 of human CNPY2 (NP_055070.1).
Sequence:	MKGWGWLALL LGALLGTAWA RRSQDLHCGA CRALVDELEW EIAQVDPKKT IQMGSFRINP DGSQSVVEVP YARSEAHLTE LLEEICDRMK EYGEQIDPST HRKNYVRVVG RNGESSELDL QGIRIDSDIS GTLKFACESE VEEYEDELIE FFSREADNVK DKLCSKRTDL CDHALHISHD EL
Isotype:	IgG
Cross-Reactivity:	Human, Mouse, Rat
Characteristics:	Polyclonal Antibodies
Purification:	Affinity purification

## Target Details

---

Target:	CNPY2/MSAP (CNPY2)
Alternative Name:	CNPY2 ( <a href="#">CNPY2 Products</a> )
Background:	Positive regulator of neurite outgrowth by stabilizing myosin regulatory light chain (MRLC. It prevents MIR-mediated MRLC ubiquitination and its subsequent proteasomal degradation.,CNPY2,HP10390,MSAP,TMEM4,ZSIG9,Cell Biology & Developmental Biology,Ubiquitin,CNPY2
Molecular Weight:	9 kDa/20 kDa
Gene ID:	10330
UniProt:	<a href="#">Q9Y2B0</a>

## Application Details

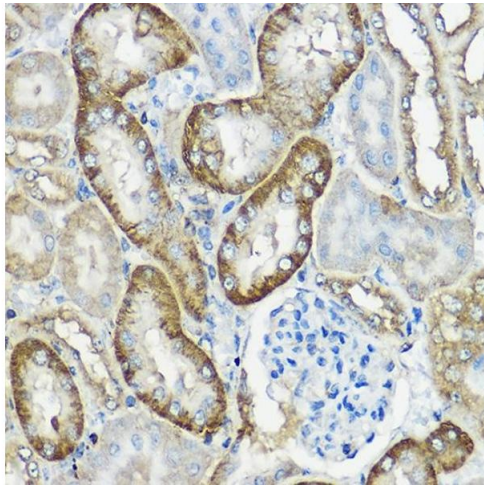
---

Application Notes:	WB,1:500 - 1:2000,IHC,1:50 - 1:200
Comment:	HIGH QUALITY
Restrictions:	For Research Use only

## Handling

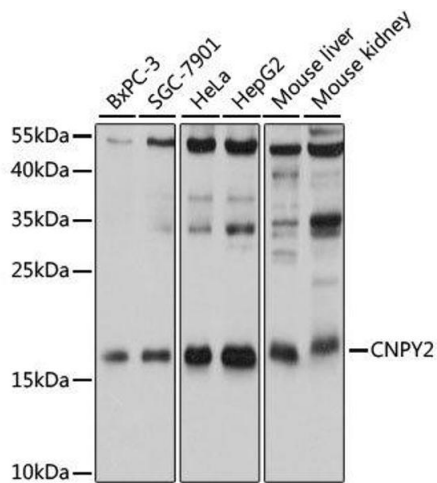
---

Format:	Liquid
Buffer:	PBS with 0.02 % sodium azide,50 % glycerol, pH 7.3.
Preservative:	Sodium azide
Precaution of Use:	This product contains Sodium azide: a POISONOUS AND HAZARDOUS SUBSTANCE which should be handled by trained staff only.
Storage:	-20 °C
Storage Comment:	Store at -20°C. Avoid freeze / thaw cycles.



### Immunohistochemistry

**Image 1.** Immunohistochemistry of paraffin-embedded mouse kidney using CNPY2 Rabbit pAb at dilution of 1:100 (40x lens). Perform high pressure antigen retrieval with 10 mM citrate buffer pH 6.0 before commencing with IHC staining protocol.



### Western Blotting

**Image 2.** Western blot analysis of extracts of various cell lines, using CNPY2 antibody.