

Datasheet for ABIN6138827
anti-COG6 antibody (AA 508-657)



[Go to Product page](#)

1 Image

Overview

Quantity:	100 µL
Target:	COG6
Binding Specificity:	AA 508-657
Reactivity:	Human
Host:	Rabbit
Clonality:	Polyclonal
Conjugate:	This COG6 antibody is un-conjugated
Application:	Western Blotting (WB)

Product Details

Immunogen:	Recombinant fusion protein containing a sequence corresponding to amino acids 508-657 of human COG6 (NP_065802.1).
Sequence:	MKTTLALFEF TDRRLEMLQF QIEAHLDTLI NEQASYVLTR VGLSYIYNTV QQHKPEQGSL ANMPNLDSVT LKAAMVQFDR YLSAPDNLLI PQLNFLLSAT VKEQIVKQST ELVCRAYGEV YAAVMNPINE YKDPENILHR SPQQVQTLLS
Isotype:	IgG
Cross-Reactivity:	Human, Mouse, Rat
Characteristics:	Polyclonal Antibodies
Purification:	Affinity purification

Target Details

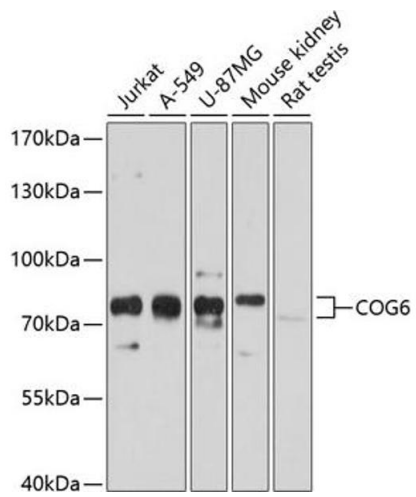
Target:	COG6
Alternative Name:	COG6 (COG6 Products)
Background:	This gene encodes a subunit of the conserved oligomeric Golgi complex that is required for maintaining normal structure and activity of the Golgi apparatus. The encoded protein is organized with conserved oligomeric Golgi complex components 5, 7 and 8 into a sub-complex referred to as lobe B. Alternative splicing results in multiple transcript variants.,COG6,CDG2L,COD2,SHNS,Signal Transduction,COG6
Molecular Weight:	7 kDa/68 kDa/73 kDa
Gene ID:	57511
UniProt:	Q9Y2V7

Application Details

Application Notes:	WB,1:1000 - 1:2000
Comment:	HIGH QUALITY
Restrictions:	For Research Use only

Handling

Format:	Liquid
Buffer:	PBS with 0.02 % sodium azide,50 % glycerol, pH 7.3.
Preservative:	Sodium azide
Precaution of Use:	This product contains Sodium azide: a POISONOUS AND HAZARDOUS SUBSTANCE which should be handled by trained staff only.
Storage:	-20 °C
Storage Comment:	Store at -20°C. Avoid freeze / thaw cycles.



Western Blotting

Image 1. Western blot analysis of extracts of various cell lines, using COG6 antibody at 1:1000 dilution. Secondary antibody: HRP Goat Anti-Rabbit IgG (H+L) (ABIN1684268 and ABIN3020597) at 1:10000 dilution. Lysates/proteins: 25 µg per lane. Blocking buffer: 3% nonfat dry milk in TBST. Detection: ECL Basic Kit (RM00020). Exposure time: 10s.