



[Go to Product page](#)

Datasheet for ABIN6138845
anti-COL4a5 antibody (AA 1462-1691)

1 Image

Overview

Quantity:	100 µL
Target:	COL4a5 (COL4A5)
Binding Specificity:	AA 1462-1691
Reactivity:	Human
Host:	Rabbit
Clonality:	Polyclonal
Conjugate:	This COL4a5 antibody is un-conjugated
Application:	Western Blotting (WB)

Product Details

Immunogen:	Recombinant fusion protein containing a sequence corresponding to amino acids 1462-1691 of human COL4A5 (NP_203699.1).
Sequence:	SSVAHGFLIT RHSQTTDAPQ CPQGLTQVYE GFSLLYVQGN KRAHGQDLGT AGSCLRRFST MPFMFCNINN VCNFASRNDY SYWLSTPEPM PMSMQPLKGQ SIQPFISRCA VCEAPAVVIA VHSQTIQIPH CPQGWDSLWI GYSFMMHTSA GAEGSGQALA SPGSCLEEFR SAPFIECHGR GTCNYYANSY SFWLATVDVS DMFSKPQSET LKAGDLRTRI SRCQVCMKRT
Isotype:	IgG
Cross-Reactivity:	Human
Characteristics:	Polyclonal Antibodies
Purification:	Affinity purification

Target Details

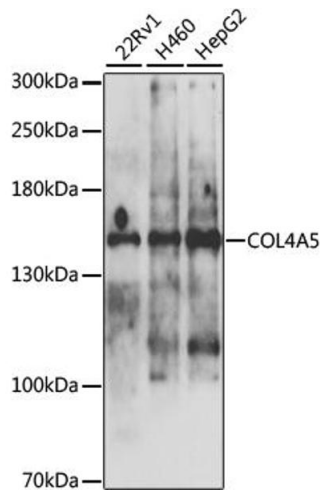
Target:	COL4a5 (COL4A5)
Alternative Name:	COL4A5 (COL4A5 Products)
Background:	This gene encodes one of the six subunits of type IV collagen, the major structural component of basement membranes. Mutations in this gene are associated with X-linked Alport syndrome, also known as hereditary nephritis. Like the other members of the type IV collagen gene family, this gene is organized in a head-to-head conformation with another type IV collagen gene so that each gene pair shares a common promoter. Alternatively spliced transcript variants have been identified for this gene.,COL4A5,ASLN,ATS,CA54,COL4A5
Molecular Weight:	161 kDa
Gene ID:	1287
UniProt:	P29400
Pathways:	Skeletal Muscle Fiber Development

Application Details

Application Notes:	WB,1:500 - 1:2000
Comment:	HIGH QUALITY
Restrictions:	For Research Use only

Handling

Format:	Liquid
Buffer:	PBS with 0.02 % sodium azide,50 % glycerol, pH 7.3.
Preservative:	Sodium azide
Precaution of Use:	This product contains Sodium azide: a POISONOUS AND HAZARDOUS SUBSTANCE which should be handled by trained staff only.
Storage:	-20 °C
Storage Comment:	Store at -20°C. Avoid freeze / thaw cycles.



Western Blotting

Image 1. Western blot analysis of extracts of various cell lines, using COL4 antibody (ABIN6130196, ABIN6138845, ABIN6138846 and ABIN6225111) at 1:1000 dilution. Secondary antibody: HRP Goat Anti-Rabbit IgG (H+L) (ABIN1684268 and ABIN3020597) at 1:10000 dilution. Lysates/proteins: 25 µg per lane. Blocking buffer: 3 % nonfat dry milk in TBST. Detection: ECL Basic Kit (RM00020). Exposure time: 5s.