

Datasheet for ABIN6138857
anti-COLEC12 antibody (AA 60-270)



[Go to Product page](#)

1 Image

Overview

| | |
|----------------------|--|
| Quantity: | 100 µL |
| Target: | COLEC12 |
| Binding Specificity: | AA 60-270 |
| Reactivity: | Human |
| Host: | Rabbit |
| Clonality: | Polyclonal |
| Conjugate: | This COLEC12 antibody is un-conjugated |
| Application: | Western Blotting (WB) |

Product Details

| | |
|-------------------|--|
| Immunogen: | Recombinant fusion protein containing a sequence corresponding to amino acids 60-270 of human COLEC12 (NP_569057.1). |
| Sequence: | KVVEKMDNVT GGMETSRQTY DDKLTAVESD LKKLGDQTGK KAISTNSELS TFRSDILDLR QQLREITEKT SKNKDTLEKL QASGDALVDR QSQLKETLEN NSFLITTVNK TLQAYNGYVT NLQQDTSVLQ GNLQNQMYSH NVVIMNLLNNL NLTQVQQRNL ITNLQRSVDD TSQAIQRIKN DFQNLQQVFL QAKKDTDWLK EKVQSLQTLA A |
| Isotype: | IgG |
| Cross-Reactivity: | Human, Mouse |
| Characteristics: | Polyclonal Antibodies |
| Purification: | Affinity purification |

Target Details

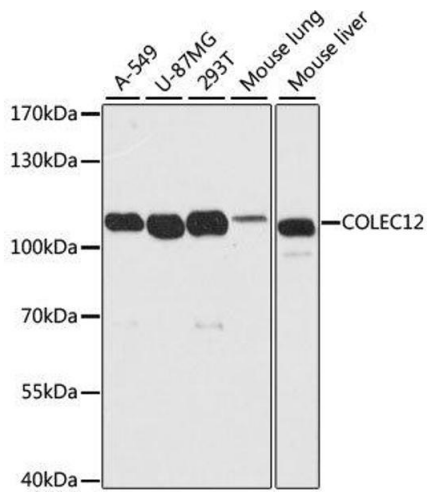
| | |
|-------------------|---|
| Target: | COLEC12 |
| Alternative Name: | COLEC12 (COLEC12 Products) |
| Background: | <p>This gene encodes a member of the C-lectin family, proteins that possess collagen-like sequences and carbohydrate recognition domains. This protein is a scavenger receptor, a cell surface glycoprotein that displays several functions associated with host defense. It can bind to carbohydrate antigens on microorganisms, facilitating their recognition and removal. It also mediates the recognition, internalization, and degradation of oxidatively modified low density lipoprotein by vascular endothelial cells.,COLEC12,CLP1,NSR2,SCARA4,SRCL,Immunology & Inflammation,Cell Intrinsic Innate Immunity Signaling Pathway,Neuroscience,Neurodegenerative Diseases,Amyloid Plaque and Neurofibrillary Tangle Formation in Alzheimer's Disease,COLEC12</p> |
| Molecular Weight: | 81 kDa |
| Gene ID: | 81035 |
| UniProt: | Q5KU26 |
| Pathways: | Activation of Innate immune Response |

Application Details

| | |
|--------------------|-----------------------|
| Application Notes: | WB,1:500 - 1:2000 |
| Comment: | HIGH QUALITY |
| Restrictions: | For Research Use only |

Handling

| | |
|--------------------|--|
| Format: | Liquid |
| Buffer: | PBS with 0.02 % sodium azide,50 % glycerol, pH 7.3. |
| Preservative: | Sodium azide |
| Precaution of Use: | This product contains Sodium azide: a POISONOUS AND HAZARDOUS SUBSTANCE which should be handled by trained staff only. |
| Storage: | -20 °C |
| Storage Comment: | Store at -20°C. Avoid freeze / thaw cycles. |



Western Blotting

Image 1. Western blot analysis of extracts of various cell lines, using COLEC12 antibody.