



[Go to Product page](#)

Datasheet for ABIN6138871  
**anti-COPB2 antibody (AA 657-906)**

7 Images

Overview

Quantity:	100 µL
Target:	COPB2
Binding Specificity:	AA 657-906
Reactivity:	Human
Host:	Rabbit
Clonality:	Polyclonal
Conjugate:	This COPB2 antibody is un-conjugated
Application:	Western Blotting (WB), Immunohistochemistry (IHC), Immunofluorescence (IF)

Product Details

Immunogen:	Recombinant fusion protein containing a sequence corresponding to amino acids 657-906 of human COPB2 (NP_004757.1).
Sequence:	AYQLAVEAES EQKWKQLAEL AISKCFGLA QECLHHAQDY GLLLLLATAS GNANMVNKLA EGAERDGGKNN VAFMSYFLQG KVDACLELLI RTGRLPEAAF LARTYLPSQV SRVVKLWREN LSKVNQKAAE SLADPTEYEN LFPGLKEAFV VEEWVKETHA DLWPAKQYPL VTPNEERNVM EEGKDFQPSR STAQQELDGG PASPTPVIVA SHTANKEEKS LLELEVLDLN LELEDIDTTD INLDEDILDD
Isotype:	IgG
Cross-Reactivity:	Human, Mouse, Rat
Characteristics:	Polyclonal Antibodies
Purification:	Affinity purification

## Target Details

---

Target:	COPB2
Alternative Name:	COPB2 ( <a href="#">COPB2 Products</a> )
Background:	The Golgi coatomer complex (see MIM 601924) constitutes the coat of nonclathrin-coated vesicles and is essential for Golgi budding and vesicular trafficking. It consists of 7 protein subunits, including COPB2.[supplied by OMIM, Jul 2002],COPB2,beta-COP,Signal Transduction,COPB2
Molecular Weight:	99 kDa/102 kDa
Gene ID:	9276
UniProt:	<a href="#">P35606</a>

## Application Details

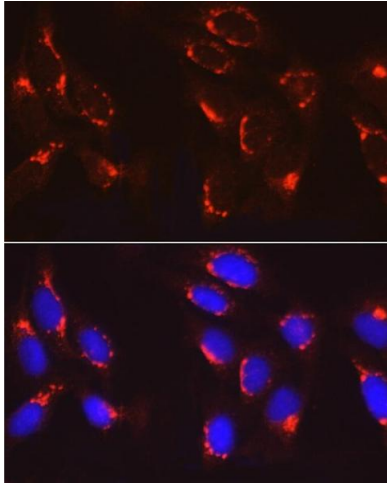
---

Application Notes:	WB,1:500 - 1:2000,IHC,1:50 - 1:200,IF,1:50 - 1:100
Comment:	HIGH QUALITY
Restrictions:	For Research Use only

## Handling

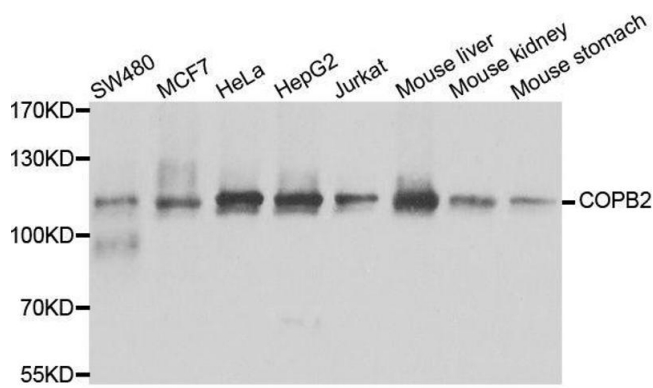
---

Format:	Liquid
Buffer:	PBS with 0.02 % sodium azide,50 % glycerol, pH 7.3.
Preservative:	Sodium azide
Precaution of Use:	This product contains Sodium azide: a POISONOUS AND HAZARDOUS SUBSTANCE which should be handled by trained staff only.
Storage:	-20 °C
Storage Comment:	Store at -20°C. Avoid freeze / thaw cycles.



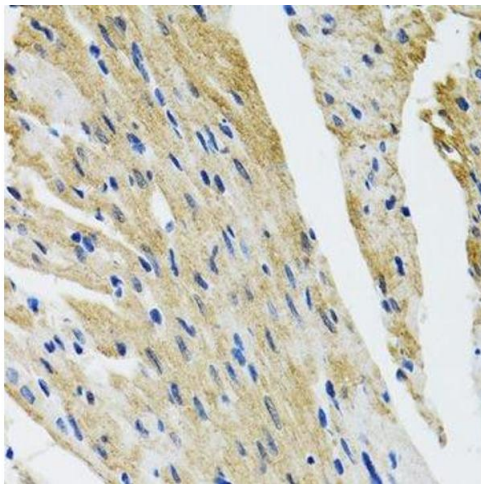
### Immunofluorescence

**Image 1.** Immunofluorescence analysis of U2OS cells using COPB2 Rabbit pAb (ABIN6129253, ABIN6138871, ABIN6138872 and ABIN6222818) at dilution of 1:100 (40x lens). Blue: DAPI for nuclear staining.



### Western Blotting

**Image 2.** Western blot analysis of extracts of various cell lines, using COPB2 antibody.



### Immunohistochemistry (Paraffin-embedded Sections)

**Image 3.** Immunohistochemistry of paraffin-embedded mouse heart using COPB2 antibody.

Please check the [product details page](#) for more images. Overall 7 images are available for ABIN6138871.