



[Go to Product page](#)

Datasheet for ABIN6138903

anti-Coronin 1a antibody (AA 362-461)

6 Images

Overview

Quantity:	100 µL
Target:	Coronin 1a (CORO1A)
Binding Specificity:	AA 362-461
Reactivity:	Human
Host:	Rabbit
Clonality:	Polyclonal
Conjugate:	This Coronin 1a antibody is un-conjugated
Application:	Western Blotting (WB), Immunohistochemistry (IHC)

Product Details

Immunogen:	Recombinant fusion protein containing a sequence corresponding to amino acids 362-461 of human CORO1A (NP_001180262.1).
Sequence:	DLYPPTAGPD PALTAEWLG GRDAGPLLIS LKDGYPVPPKS RELRVNRLD TGRRRAAPEA SGTPSSDAVS RLEEEMRKLQ ATVQELQKRL DRLEETVQAK
Isotype:	IgG
Cross-Reactivity:	Human, Mouse, Rat
Characteristics:	Polyclonal Antibodies
Purification:	Affinity purification

Target Details

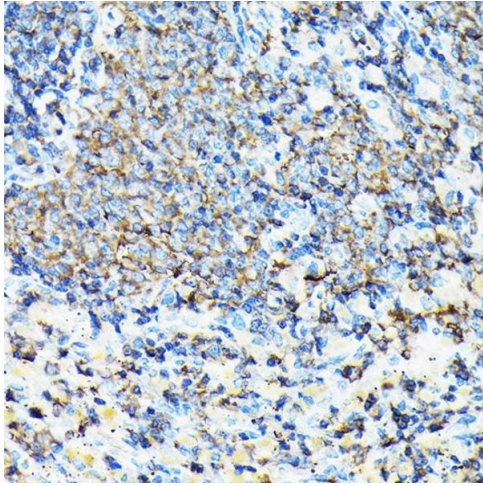
Target:	Coronin 1a (CORO1A)
Alternative Name:	CORO1A (CORO1A Products)
Background:	<p>This gene encodes a member of the WD repeat protein family. WD repeats are minimally conserved regions of approximately 40 amino acids typically bracketed by gly-his and trp-aspartate (GH-WD), which may facilitate formation of heterotrimeric or multiprotein complexes. Members of this family are involved in a variety of cellular processes, including cell cycle progression, signal transduction, apoptosis, and gene regulation. Alternative splicing results in multiple transcript variants. A related pseudogene has been defined on chromosome 16.,CORO1A,CLABP,CLIPINA,HCORO1,IMD8,TACO,p57,Epigenetics & Nuclear Signaling,RNA Binding,Signal Transduction,Cell Biology & Developmental Biology,Cytoskeleton,Microfilaments,Motor Proteins,Immunology & Inflammation,Cell Intrinsic Innate Immunity Signaling Pathway,Neuroscience,Cell Type Marker,CORO1A</p>
Molecular Weight:	51 kDa
Gene ID:	11151
UniProt:	P31146
Pathways:	Regulation of Actin Filament Polymerization

Application Details

Application Notes:	WB,1:500 - 1:2000,IHC,1:50 - 1:200
Comment:	HIGH QUALITY
Restrictions:	For Research Use only

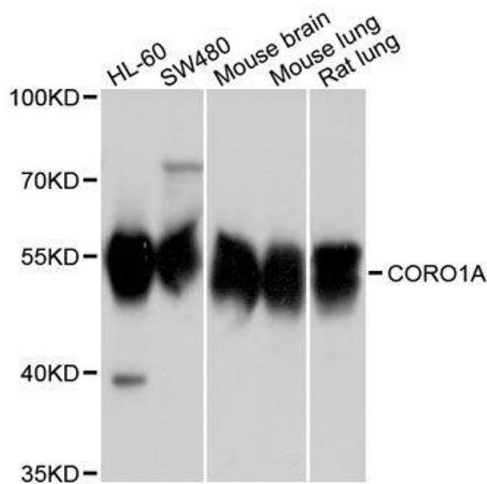
Handling

Format:	Liquid
Buffer:	PBS with 0.02 % sodium azide,50 % glycerol, pH 7.3.
Preservative:	Sodium azide
Precaution of Use:	This product contains Sodium azide: a POISONOUS AND HAZARDOUS SUBSTANCE which should be handled by trained staff only.
Storage:	-20 °C
Storage Comment:	Store at -20°C. Avoid freeze / thaw cycles.



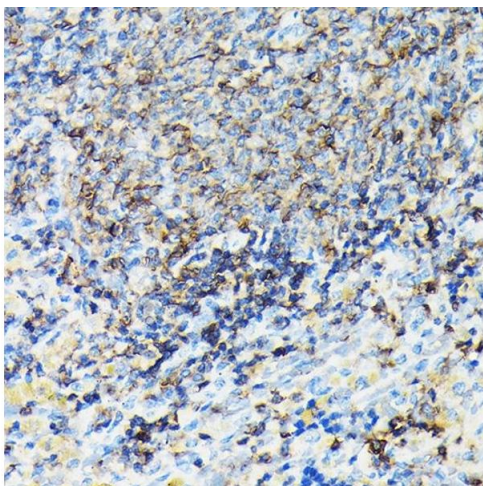
Immunohistochemistry

Image 1. Immunohistochemistry of paraffin-embedded mouse spleen using CORO1A Rabbit pAb (ABIN6133495, ABIN6138903, ABIN6138904 and ABIN6224969) at dilution of 1:100 (40x lens). Perform high pressure antigen retrieval with 10 mM citrate buffer pH 6.0 before commencing with IHC staining protocol.



Western Blotting

Image 2. Western blot analysis of extracts of various cell lines, using CORO1A antibody.



Immunohistochemistry

Image 3. Immunohistochemistry of paraffin-embedded rat spleen using CORO1A Rabbit pAb (ABIN6133495, ABIN6138903, ABIN6138904 and ABIN6224969) at dilution of 1:100 (40x lens). Perform high pressure antigen retrieval with 10 mM citrate buffer pH 6.0 before commencing with IHC staining protocol.

Please check the [product details page](#) for more images. Overall 6 images are available for ABIN6138903.