



[Go to Product page](#)

Datasheet for ABIN6138945  
**anti-CPEB1 antibody (AA 282-561)**

1 Image

Overview

Quantity:	100 µL
Target:	CPEB1
Binding Specificity:	AA 282-561
Reactivity:	Human
Host:	Rabbit
Clonality:	Polyclonal
Conjugate:	This CPEB1 antibody is un-conjugated
Application:	Western Blotting (WB)

Product Details

Immunogen:	Recombinant fusion protein containing a sequence corresponding to amino acids 282-561 of human CPEB1 (NP_085097.3).
Sequence:	HRQAAVNEA TCTWSGQLPP RNYKNPIYSC KVFLGGVPWD ITEAGLVNTF RVFGSLSVEV PGKDGKHPRC PPKGYVYLVF ELEKSVRSLL QACSHDPLSP DGLSEYYFKM SSRRMRCKEV QVIPWVLADS NFVRSPSQRL DPSRTVVFVA LHGMLNAEAL AAILNDLFGG VVYAGIDTDK HKYPIGSGRV TFNNQRSYLK AVSAAFVEIK TTKFTKKVQI DPYLEDSLCH ICSSQPGPFF CRDQVCFKYF CRSCWHWRHS MEGLRHHSPL MRNQKNRDS
Isotype:	IgG
Cross-Reactivity:	Human, Mouse, Rat
Characteristics:	Polyclonal Antibodies
Purification:	Affinity purification

## Target Details

---

Target:	CPEB1
Alternative Name:	CPEB1 ( <a href="#">CPEB1 Products</a> )
Background:	This gene encodes a member of the cytoplasmic polyadenylation element binding protein family. This highly conserved protein binds to a specific RNA sequence, called the cytoplasmic polyadenylation element, found in the 3' untranslated region of some mRNAs. The encoded protein functions in both the cytoplasm and the nucleus. It is involved in the regulation of mRNA translation, as well as processing of the 3' untranslated region, and may play a role in cell proliferation and tumorigenesis. Alternative splicing results in multiple transcript variants.,CPEB1,CPE-BP1,CPEB,CPEB-1,h-CPEB,hCPEB-1,Epigenetics & Nuclear Signaling,CPEB1
Molecular Weight:	53 kDa/54 kDa/62 kDa
Gene ID:	64506
UniProt:	<a href="#">Q9BZB8</a>
Pathways:	<a href="#">Synaptic Membrane</a>

## Application Details

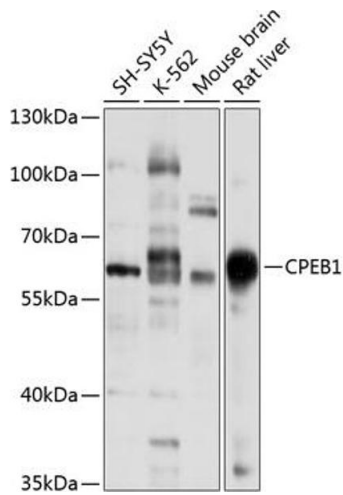
---

Application Notes:	WB,1:500 - 1:2000
Restrictions:	For Research Use only

## Handling

---

Format:	Liquid
Buffer:	PBS with 0.02 % sodium azide,50 % glycerol, pH 7.3.
Preservative:	Sodium azide
Precaution of Use:	This product contains Sodium azide: a POISONOUS AND HAZARDOUS SUBSTANCE which should be handled by trained staff only.
Storage:	-20 °C
Storage Comment:	Store at -20°C. Avoid freeze / thaw cycles.



### Western Blotting

**Image 1.** Western blot analysis of extracts of various cell lines, using CPEB1 antibody (ABIN6127656, ABIN6138945, ABIN6138946 and ABIN6221617) at 1:1000 dilution. Secondary antibody: HRP Goat Anti-Rabbit IgG (H+L) (ABIN1684268 and ABIN3020597) at 1:10000 dilution. Lysates/proteins: 25 µg per lane. Blocking buffer: 3 % nonfat dry milk in TBST. Detection: ECL Basic Kit (RM00020). Exposure time: 1s.