



[Go to Product page](#)

Datasheet for ABIN6138985  
**anti-CPVL antibody (AA 127-476)**

1 Image

Overview

Quantity:	100 µL
Target:	CPVL
Binding Specificity:	AA 127-476
Reactivity:	Human
Host:	Rabbit
Clonality:	Polyclonal
Conjugate:	This CPVL antibody is un-conjugated
Application:	Western Blotting (WB)

Product Details

Immunogen:	Recombinant fusion protein containing a sequence corresponding to amino acids 127-476 of human CPVL (NP_061902.2).
Sequence:	YVVTSNMTLR DRDFPWTTTL SMLYIDNPVG TGFSFTDDTH GYAVNEDDVA RDLYSALIQF FQIFPEYKNN DFYVTGESYA GKYVPAIAHL IHSLNPVREV KINLNGIAIG DGYSDPESII GGYAEFLYQI GLLDEKQKKY FQKQCHECIE HIRKQNWFEA FEILDKLLDG DLTSDPSYFQ NVTGCSNYYN FLRCTEPEDQ LYYVKFLSLP EVRQAIHVGN QTFNDGTIVE KYLREDTVQS VKPWLTEIMN NYKVLINYGQ LDIIVAAALT ERSLMGMDWK GSQEYKKA EK KVKWIKFKSDS EVAGYIRQAG DFHQVIIRGG GHILPYDQPL RAFDMINRFI YGKGWDPYVG
Isotype:	IgG
Cross-Reactivity:	Mouse, Rat
Characteristics:	Polyclonal Antibodies

## Product Details

---

Purification: Affinity purification

## Target Details

---

Target: CPVL

Alternative Name: CPVL ([CPVL Products](#))

Background: The protein encoded by this gene is a carboxypeptidase and bears strong sequence similarity to serine carboxypeptidases. Carboxypeptidases are a large class of proteases that act to cleave a single amino acid from the carboxy termini of proteins or peptides. The exact function of this protein, however, has not been determined. At least two alternatively spliced transcripts which encode the same protein have been observed.,CPVL,HVLP,Cell Biology & Developmental Biology,Ubiquitin,CPVL

Molecular Weight: 54 kDa

Gene ID: 54504

UniProt: [Q9H3G5](#)

## Application Details

---

Application Notes: WB,1:500 - 1:2000

Restrictions: For Research Use only

## Handling

---

Format: Liquid

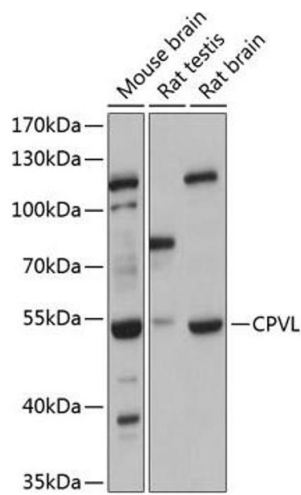
Buffer: PBS with 0.02 % sodium azide,50 % glycerol, pH 7.3.

Preservative: Sodium azide

Precaution of Use: This product contains Sodium azide: a POISONOUS AND HAZARDOUS SUBSTANCE which should be handled by trained staff only.

Storage: -20 °C

Storage Comment: Store at -20°C. Avoid freeze / thaw cycles.



### Western Blotting

**Image 1.** Western blot analysis of extracts of various cell lines, using CPVL antibody (ABIN6130825, ABIN6138985, ABIN6138987 and ABIN6215977) at 1:3000 dilution. Secondary antibody: HRP Goat Anti-Rabbit IgG (H+L) (ABIN1684268 and ABIN3020597) at 1:10000 dilution. Lysates/proteins: 25  $\mu$ g per lane. Blocking buffer: 3% nonfat dry milk in TBST. Detection: ECL Basic Kit (RM00020). Exposure time: 5s.