

Datasheet for ABIN6138990
anti-CD35 antibody (AA 420-550)

2 Images

[Go to Product page](#)

Overview

Quantity:	100 µL
Target:	CD35 (CR1)
Binding Specificity:	AA 420-550
Reactivity:	Human
Host:	Rabbit
Clonality:	Polyclonal
Conjugate:	This CD35 antibody is un-conjugated
Application:	Western Blotting (WB), Immunofluorescence (IF)

Product Details

Immunogen:	Recombinant fusion protein containing a sequence corresponding to amino acids 420-550 of human CD35/CD35/CR1 (NP_000642.3).
Sequence:	FCPSPPVIPN GRHTGKPLEV FPFGKTVNYT CDPHPDRGTS FDLIGESTIR CTSDPQGNGV WSSPAPRCGI LGHCQAPDHF LFAKLKTQTN ASDFPIGTSL KYECRPEYYG RPFISITCLDN LVWSSPKDVC K
Isotype:	IgG
Cross-Reactivity:	Human
Characteristics:	Polyclonal Antibodies
Purification:	Affinity purification

Target Details

Target:	CD35 (CR1)
Alternative Name:	CR1 (CR1 Products)
Background:	<p>This gene is a member of the receptors of complement activation (RCA) family and is located in the 'cluster RCA' region of chromosome 1. The gene encodes a monomeric single-pass type I membrane glycoprotein found on erythrocytes, leukocytes, glomerular podocytes, and splenic follicular dendritic cells. The Knops blood group system is a system of antigens located on this protein. The protein mediates cellular binding to particles and immune complexes that have activated complement. Decreases in expression of this protein and/or mutations in its gene have been associated with gallbladder carcinomas, mesangiocapillary glomerulonephritis, systemic lupus erythematosus and sarcoidosis. Mutations in this gene have also been associated with a reduction in Plasmodium falciparum rosetting, conferring protection against severe malaria. Alternate allele-specific splice variants, encoding different isoforms, have been characterized. Additional allele specific isoforms, including a secreted form, have been described but have not been fully characterized.,CR1,C3BR,C4BR,CD35,KN,Immunology & Inflammation,CD markers,Stem Cells,Hematopoietic Progenitors,CR1</p>
Molecular Weight:	223 kDa
Gene ID:	1378
UniProt:	P17927
Pathways:	Complement System , Regulation of Leukocyte Mediated Immunity , Positive Regulation of Endopeptidase Activity

Application Details

Application Notes:	WB,1:500 - 1:2000,IF,1:50 - 1:200
Restrictions:	For Research Use only

Handling

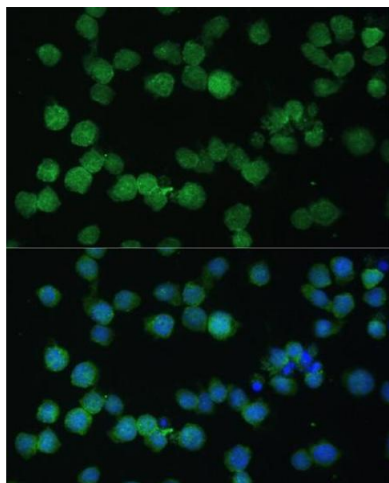
Format:	Liquid
Buffer:	PBS with 0.02 % sodium azide,50 % glycerol, pH 7.3.
Preservative:	Sodium azide
Precaution of Use:	This product contains Sodium azide: a POISONOUS AND HAZARDOUS SUBSTANCE which should be handled by trained staff only.

Handling

Storage: -20 °C

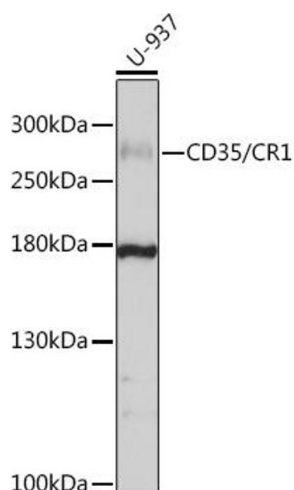
Storage Comment: Store at -20°C. Avoid freeze / thaw cycles.

Images



Immunofluorescence

Image 1. Immunofluorescence analysis of THP-1 cells using CD35/CD35/CR1 antibody (ABIN6130075, ABIN6138990, ABIN6138991 and ABIN6214176) at dilution of 1:100. Blue: DAPI for nuclear staining.



Western Blotting

Image 2. Western blot analysis of extracts of U-937 cells, using CD35/CD35/CR1 antibody (ABIN6130075, ABIN6138990, ABIN6138991 and ABIN6214176) at 1:1000 dilution. Secondary antibody: HRP Goat Anti-Rabbit IgG (H+L) (ABIN1684268 and ABIN3020597) at 1:10000 dilution. Lysates/proteins: 25 µg per lane. Blocking buffer: 3 % nonfat dry milk in TBST. Detection: ECL Basic Kit (RM00020). Exposure time: 60s.