



[Go to Product page](#)

Datasheet for ABIN6138992
anti-CD21 antibody (AA 300-590)

5 Images

Overview

Quantity:	100 µL
Target:	CD21 (CR2)
Binding Specificity:	AA 300-590
Reactivity:	Human
Host:	Rabbit
Clonality:	Polyclonal
Conjugate:	This CD21 antibody is un-conjugated
Application:	Immunohistochemistry (IHC), Western Blotting (WB), Immunofluorescence (IF)

Product Details

Immunogen:	Recombinant fusion protein containing a sequence corresponding to amino acids 300-590 of human CR2/CD21 (NP_001006659.1).
Sequence:	IVTYTCDPDP EEGVNFILIG ESTLRCTVDS QKTGTWSGPA PRCELSTSAV QCPHPQILRG RMVSGQKDRY TYNDTVIFAC MFGFTLKGSK QIRCNAQGTW EPSAPVCEKE CQAPPNILNG QKEDRHMVRF DPGTSIKYSC NPGYVLVGEE SIQCTSEGWW TPPVPQCKVA ACEATGRQLL TKPQHQFVRP DVNSSCGEGY KLSGSVYQEC QGTIPWFMEI RLCKEITCPP PPVIYNGAHT GSSLEDFPYG TTVTYTCNPG PERGVEFSLI GESTIRCTSN DQERGTWSP A
Isotype:	IgG
Cross-Reactivity:	Human, Mouse, Rat
Characteristics:	Polyclonal Antibodies
Purification:	Affinity purification

Target Details

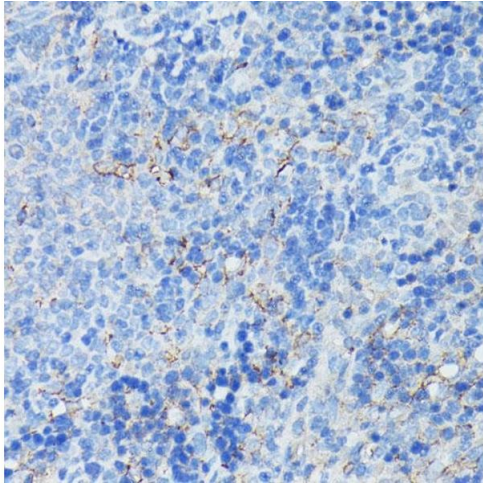
Target:	CD21 (CR2)
Alternative Name:	CR2 (CR2 Products)
Background:	This gene encodes a membrane protein, which functions as a receptor for Epstein-Barr virus (EBV) binding on B and T lymphocytes. Genetic variations in this gene are associated with susceptibility to systemic lupus erythematosus type 9 (SLEB9). Alternatively spliced transcript variants encoding different isoforms have been found for this gene.,CR2,C3DR,CD21,CR,CVID7,SLEB9,Immunology & Inflammation,CD markers,CR2
Molecular Weight:	110 kDa/112 kDa/118 kDa/119 kDa
Gene ID:	1380
UniProt:	P20023
Pathways:	Complement System

Application Details

Application Notes:	WB,1:500 - 1:2000,IHC,1:50 - 1:100,IF,1:50 - 1:100
Comment:	HIGH QUALITY
Restrictions:	For Research Use only

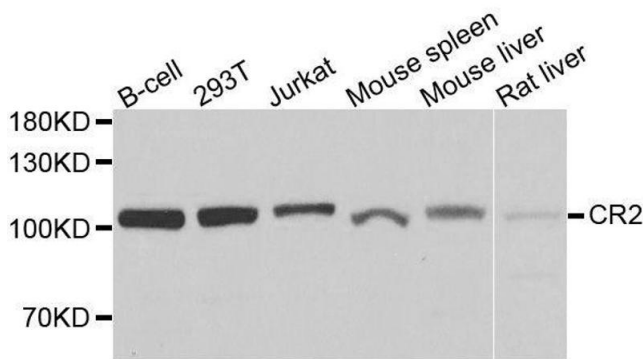
Handling

Format:	Liquid
Buffer:	PBS with 0.02 % sodium azide,50 % glycerol, pH 7.3.
Preservative:	Sodium azide
Precaution of Use:	This product contains Sodium azide: a POISONOUS AND HAZARDOUS SUBSTANCE which should be handled by trained staff only.
Storage:	-20 °C
Storage Comment:	Store at -20°C. Avoid freeze / thaw cycles.



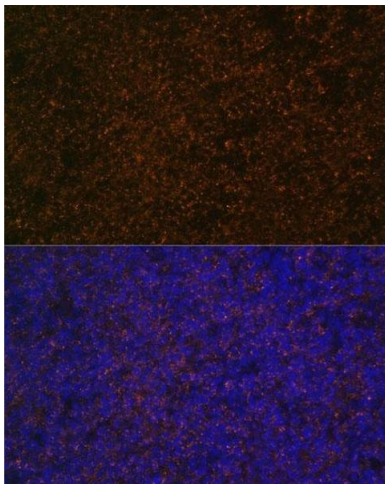
Immunohistochemistry

Image 1. Immunohistochemistry of paraffin-embedded rat spleen using CR2/CD21 antibody (ABIN6132246, ABIN6138992, ABIN6138993 and ABIN6224458) at dilution of 1:100 (40x lens). Perform microwave antigen retrieval with 10 mM PBS buffer pH 7.2 before commencing with IHC staining protocol.



Western Blotting

Image 2. Western blot analysis of extracts of various cell lines, using CR2 antibody.



Immunofluorescence

Image 3. Immunofluorescence analysis of rat spleen using CR2/CD21 Polyclonal Antibody (ABIN6132246, ABIN6138992, ABIN6138993 and ABIN6224458) at dilution of 1:100 (40x lens). Blue: DAPI for nuclear staining.

Please check the [product details page](#) for more images. Overall 5 images are available for ABIN6138992.