



[Go to Product page](#)

Datasheet for ABIN6139003
anti-CRAT antibody (AA 357-626)

2 Images

Overview

Quantity:	100 µL
Target:	CRAT
Binding Specificity:	AA 357-626
Reactivity:	Human
Host:	Rabbit
Clonality:	Polyclonal
Conjugate:	This CRAT antibody is un-conjugated
Application:	Western Blotting (WB), Immunofluorescence (IF)

Product Details

Immunogen:	Recombinant fusion protein containing a sequence corresponding to amino acids 357-626 of human CRAT (NP_000746.2).
Sequence:	YVIEYTKKPE LVRSPMVPLP MPKCLRNFIT PEIKSDIEKA KQNLSIMIQD LDITVMVFHH FGKDFPKSEK LSPDAFIQMA LQLAYYRIYG QACATYESAS LRMFHLGRTD TIRSASMDSL TFVKAMDDSS VTEHQKVELL RKAVQAHRGY TDRAIRGEAF DRHLLGLKLQ AIEDLVSMPP IFMDTSYAIA MHFHLSTSQV PAKTDCVMFF GPVVPDGYGV CYNPMEAHIN FLSAYNSCA ETNAARLAHY LEKALLDMRA LLQSHPRAKL
Isotype:	IgG
Cross-Reactivity:	Human, Mouse, Rat
Characteristics:	Polyclonal Antibodies
Purification:	Affinity purification

Target Details

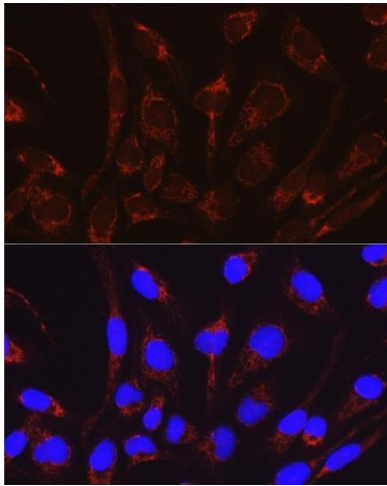
Target:	CRAT
Alternative Name:	CRAT (CRAT Products)
Background:	This gene encodes carnitine acetyltransferase (CRAT), which is a key enzyme in the metabolic pathway in mitochondria, peroxisomes and endoplasmic reticulum. CRAT catalyzes the reversible transfer of acyl groups from an acyl-CoA thioester to carnitine and regulates the ratio of acylCoA/CoA in the subcellular compartments. Two transcript variants encoding different isoforms have been found for this gene.,CRAT,CAT,CAT1,CRAT
Molecular Weight:	61 kDa/68 kDa/70 kDa
Gene ID:	1384
UniProt:	P43155
Pathways:	Monocarboxylic Acid Catabolic Process

Application Details

Application Notes:	WB,1:500 - 1:2000,IF,1:50 - 1:100
Comment:	HIGH QUALITY
Restrictions:	For Research Use only

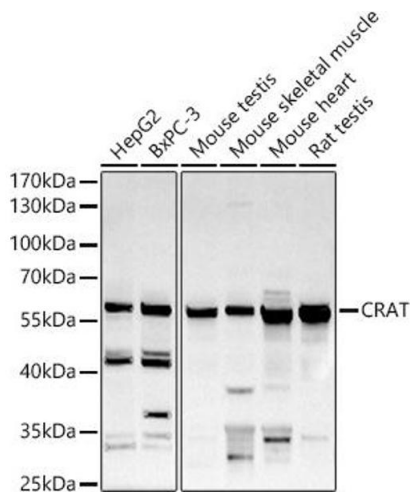
Handling

Format:	Liquid
Buffer:	PBS with 0.02 % sodium azide,50 % glycerol, pH 7.3.
Preservative:	Sodium azide
Precaution of Use:	This product contains Sodium azide: a POISONOUS AND HAZARDOUS SUBSTANCE which should be handled by trained staff only.
Storage:	-20 °C
Storage Comment:	Store at -20°C. Avoid freeze / thaw cycles.



Immunofluorescence

Image 1. Immunofluorescence analysis of RD cells using CRAT Rabbit pAb (ABIN6131297, ABIN6139003, ABIN6139004 and ABIN6221982) at dilution of 1:50 (40x lens). Blue: DAPI for nuclear staining.



Western Blotting

Image 2. Western blot analysis of extracts of various cell lines, using CRAT antibody (ABIN6131297, ABIN6139003, ABIN6139004 and ABIN6221982) at 1:500 dilution. Secondary antibody: HRP Goat Anti-Rabbit IgG (H+L) (ABIN1684268 and ABIN3020597) at 1:10000 dilution. Lysates/proteins: 25 µg per lane. Blocking buffer: 3 % nonfat dry milk in TBST. Detection: ECL Basic Kit (RM00020). Exposure time: 90s.