



[Go to Product page](#)

Datasheet for ABIN6139013
anti-CREB3 antibody (AA 1-230)

4 Images

Overview

Quantity:	100 µL
Target:	CREB3
Binding Specificity:	AA 1-230
Reactivity:	Human
Host:	Rabbit
Clonality:	Polyclonal
Conjugate:	This CREB3 antibody is un-conjugated
Application:	Western Blotting (WB), Immunofluorescence (IF)

Product Details

Immunogen:	Recombinant fusion protein containing a sequence corresponding to amino acids 1-230 of human CREB3 (NP_006359.3).
Sequence:	MELELDAGDQ DLLAFLLEES GDLGTAPDEA VRAPLDWALP LSEVPSDWEV DDLLCSLLSP PASLNILSSS NPCLVHHHT YSLPRETVSM DLESESCRKE GTQMTPQHME ELAEQEIARL VLTDEEKSLLEKEGLILPET LPLTKTEEQI LKRVRKIRN KRSAQESRRK KKVYVGGLES RVLKYTAQNM ELQNKVQLLE EQNLSLLDQL RKLQAMVIEI SNKTSSSSTC
Isotype:	IgG
Cross-Reactivity:	Human, Mouse, Rat
Characteristics:	Polyclonal Antibodies
Purification:	Affinity purification

Target Details

Target:	CREB3
Alternative Name:	CREB3 (CREB3 Products)
Background:	<p>This gene encodes a transcription factor that is a member of the leucine zipper family of DNA binding proteins. This protein binds to the cAMP-response element and regulates cell proliferation. The protein interacts with host cell factor C1, which also associates with the herpes simplex virus (HSV) protein VP16 that induces transcription of HSV immediate-early genes. This protein and VP16 both bind to the same site on host cell factor C1. It is thought that the interaction between this protein and host cell factor C1 plays a role in the establishment of latency during HSV infection. This protein also plays a role in leukocyte migration, tumor suppression, and endoplasmic reticulum stress-associated protein degradation. Additional transcript variants have been identified, but their biological validity has not been determined.,CREB3,LUMAN,LZIP,sLZIP,Epigenetics & Nuclear Signaling,Transcription Factors,Neuroscience,Neurodegenerative Diseases,CREB3</p>
Molecular Weight:	39 kDa/41 kDa/43 kDa
Gene ID:	10488
UniProt:	O43889
Pathways:	Thyroid Hormone Synthesis , Myometrial Relaxation and Contraction , ER-Nucleus Signaling , Maintenance of Protein Location , Unfolded Protein Response

Application Details

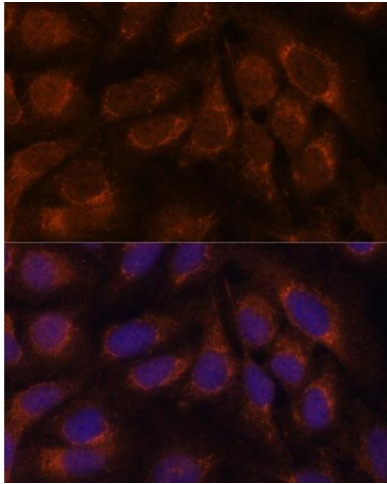
Application Notes:	WB,1:500 - 1:2000,IF,1:10 - 1:100
Comment:	HIGH QUALITY
Restrictions:	For Research Use only

Handling

Format:	Liquid
Buffer:	PBS with 0.02 % sodium azide,50 % glycerol, pH 7.3.
Preservative:	Sodium azide
Precaution of Use:	This product contains Sodium azide: a POISONOUS AND HAZARDOUS SUBSTANCE which should be handled by trained staff only.
Storage:	-20 °C

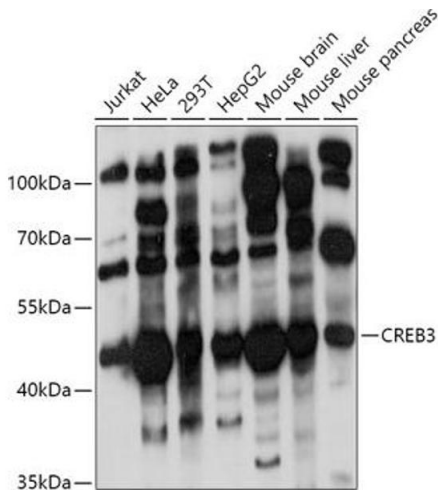
Storage Comment: Store at -20°C. Avoid freeze / thaw cycles.

Images



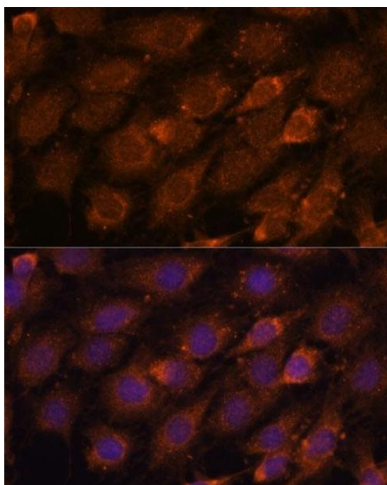
Immunofluorescence

Image 1. Immunofluorescence analysis of U-2 OS cells using CREB3 antibody (ABIN6128862, ABIN6139013, ABIN6139015 and ABIN6222241) at dilution of 1:100. Blue: DAPI for nuclear staining.



Western Blotting

Image 2. Western blot analysis of extracts of various cell lines, using CREB3 antibody (ABIN6128862, ABIN6139013, ABIN6139015 and ABIN6222241) at 1:1000 dilution. Secondary antibody: HRP Goat Anti-Rabbit IgG (H+L) (ABIN1684268 and ABIN3020597) at 1:10000 dilution. Lysates/proteins: 25 µg per lane. Blocking buffer: 3 % nonfat dry milk in TBST. Detection: ECL Basic Kit (RM00020). Exposure time: 1s.



Immunofluorescence

Image 3. Immunofluorescence analysis of C6 cells using CREB3 antibody (ABIN6128862, ABIN6139013, ABIN6139015 and ABIN6222241) at dilution of 1:100. Blue: DAPI for nuclear staining.

Please check the [product details page](#) for more images. Overall 4 images are available for ABIN6139013.