



Datasheet for ABIN6139020  
**anti-PCNA antibody**



[Go to Product page](#)

7 Images

Overview

Quantity:	100 µL
Target:	PCNA
Reactivity:	Human
Host:	Rabbit
Clonality:	Monoclonal
Conjugate:	This PCNA antibody is un-conjugated
Application:	Western Blotting (WB), Immunohistochemistry (IHC), Immunofluorescence (IF), Immunoprecipitation (IP)

Product Details

Immunogen:	A synthesized peptide derived from human PCNA
Isotype:	IgG
Cross-Reactivity:	Green Monkey, Human, Mouse, Rat
Characteristics:	Monoclonal Antibodies
Purification:	Affinity purification

Target Details

Target:	PCNA
Alternative Name:	PCNA ( <a href="#">PCNA Products</a> )
Background:	The protein encoded by this gene is found in the nucleus and is a cofactor of DNA polymerase

## Target Details

---

delta. The encoded protein acts as a homotrimer and helps increase the processivity of leading strand synthesis during DNA replication. In response to DNA damage, this protein is ubiquitinated and is involved in the RAD6-dependent DNA repair pathway. Two transcript variants encoding the same protein have been found for this gene. Pseudogenes of this gene have been described on chromosome 4 and on the X chromosome. [provided by RefSeq, Jul 2008],ATLD2,Cancer,Cell Biology & Developmental Biology,Cell Cycle,Epigenetics & Nuclear Signaling,ErbB-HER Signaling Pathway,Signal Transduction,Stem Cells,Tumor biomarkers,PCNA

Molecular Weight: 29 kDa

Gene ID: 5111

UniProt: [P12004](#)

Pathways: [Telomere Maintenance](#), [DNA Damage Repair](#), [Mitotic G1-G1/S Phases](#), [DNA Replication](#), [Synthesis of DNA](#), [Autophagy](#)

## Application Details

---

Application Notes: WB,1:500 - 1:2000,IHC,1:50 - 1:200,IF,1:50 - 1:200,IP,1:50 - 1:200

Comment: HIGH QUALITY

Restrictions: For Research Use only

## Handling

---

Format: Liquid

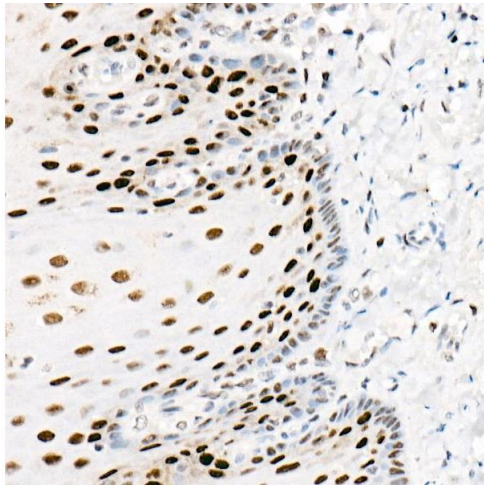
Buffer: PBS with 0.02 % sodium azide,0.05 % BSA,50 % glycerol, pH 7.3.

Preservative: Sodium azide

Precaution of Use: This product contains Sodium azide: a POISONOUS AND HAZARDOUS SUBSTANCE which should be handled by trained staff only.

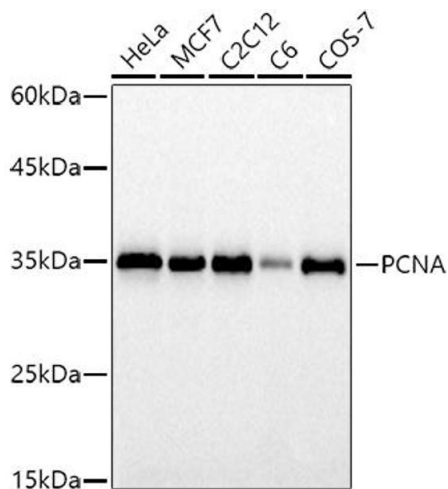
Storage: -20 °C

Storage Comment: Store at -20°C. Avoid freeze / thaw cycles.



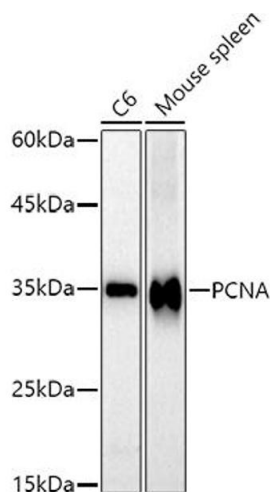
### Immunohistochemistry

**Image 1.** Immunohistochemistry of paraffin-embedded human esophagus using PCNA antibody (ABIN6133630, ABIN6139020, ABIN6139022 and ABIN7101400) at dilution of 1:2700 (40x lens). Perform high pressure antigen retrieval with 10 mM citrate buffer pH 6.0 before commencing with IHC staining protocol.



### Western Blotting

**Image 2.** Western blot analysis of extracts of various cell lines, using PCNA antibody (ABIN6133630, ABIN6139020, ABIN6139022 and ABIN7101400) at 1:1000 dilution. Secondary antibody: HRP Goat Anti-Rabbit IgG (H+L) (ABIN1684268 and ABIN3020597) at 1:10000 dilution. Lysates/proteins: 25 µg per lane. Blocking buffer: 3 % nonfat dry milk in TBST. Detection: ECL Basic Kit (RM00020). Exposure time: 10s.



### Western Blotting

**Image 3.** Western blot analysis of extracts of various cell lines, using PCNA antibody (ABIN6133630, ABIN6139020, ABIN6139022 and ABIN7101400) at 1:1000 dilution. Secondary antibody: HRP Goat Anti-Rabbit IgG (H+L) (ABIN1684268 and ABIN3020597) at 1:10000 dilution. Lysates/proteins: 25 µg per lane. Blocking buffer: 3 % nonfat dry milk in TBST. Detection: ECL Basic Kit (RM00020). Exposure time: 30s.

Please check the [product details page](#) for more images. Overall 7 images are available for ABIN6139020.