

Datasheet for ABIN6139061
anti-CRY1 antibody (AA 1-255)



[Go to Product page](#)

2 Images

Overview

Quantity:	100 µL
Target:	CRY1
Binding Specificity:	AA 1-255
Reactivity:	Human
Host:	Rabbit
Clonality:	Polyclonal
Conjugate:	This CRY1 antibody is un-conjugated
Application:	Western Blotting (WB)

Product Details

Immunogen:	Recombinant fusion protein containing a sequence corresponding to amino acids 1-255 of human CRY1 (NP_004066.1).
Sequence:	MGVNAVHWFR KGLRLHDNPA LKECIQGADT IRCVYILDPW FAGSSNVGIN RWRFLQCLE DL DANLRKLN SRLFVIRGQP ADVFPRLFKE WNITKLSIEY DSEPFGERD AAIKKLATEA GVEVIVRISH TLYDLDKIIE LNGGQPPLTY KRFQTLISKM EPLEIPVETI TSEVIEKCTT PLSDDHDEKY GVPSLEELGF DTDGLSSAVW PGGETEALTR LERHLERKAW VANFERPRMN ANSLLASPTG LSPYL
Isotype:	IgG
Cross-Reactivity:	Human, Mouse, Rat
Characteristics:	Polyclonal Antibodies
Purification:	Affinity purification

Target Details

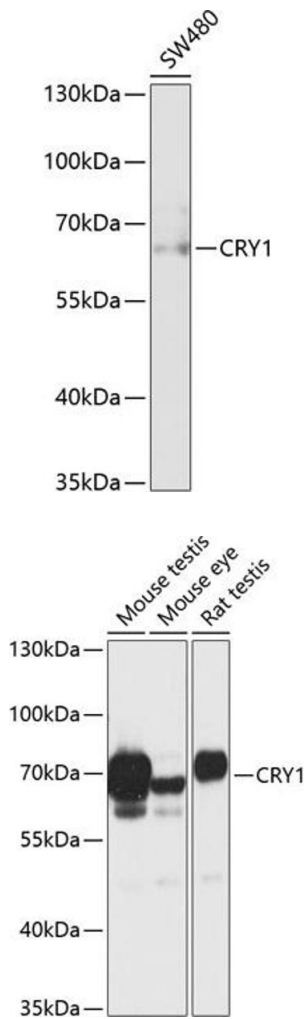
Target:	CRY1
Alternative Name:	CRY1 (CRY1 Products)
Background:	This gene encodes a flavin adenine dinucleotide-binding protein that is a key component of the circadian core oscillator complex, which regulates the circadian clock. This gene is upregulated by CLOCK/ARNTL heterodimers but then represses this upregulation in a feedback loop using PER/CRY heterodimers to interact with CLOCK/ARNTL. Polymorphisms in this gene have been associated with altered sleep patterns. The encoded protein is widely conserved across plants and animals. Loss of the related gene in mouse results in a shortened circadian cycle in complete darkness.,CRY1,PHLL1,DSPD,Signal Transduction,G protein signaling,G-Protein-Coupled Receptors(GPCR),Neuroscience,Cardiovascular,Blood,Blood Pressure regulation,CRY1
Molecular Weight:	66 kDa
Gene ID:	1407
UniProt:	Q16526
Pathways:	Response to Water Deprivation , Proton Transport

Application Details

Application Notes:	WB,1:500 - 1:2000
Restrictions:	For Research Use only

Handling

Format:	Liquid
Buffer:	PBS with 0.02 % sodium azide,50 % glycerol, pH 7.3.
Preservative:	Sodium azide
Precaution of Use:	This product contains Sodium azide: a POISONOUS AND HAZARDOUS SUBSTANCE which should be handled by trained staff only.
Storage:	-20 °C
Storage Comment:	Store at -20°C. Avoid freeze / thaw cycles.



Western Blotting

Image 1. Western blot analysis of extracts of SW480 cells, using CRY1 antibody (ABIN6130203, ABIN6139061, ABIN6139064 and ABIN6217742) at 1:1000 dilution. Secondary antibody: HRP Goat Anti-Rabbit IgG (H+L) (ABIN1684268 and ABIN3020597) at 1:10000 dilution. Lysates/proteins: 25 µg per lane. Blocking buffer: 3 % nonfat dry milk in TBST. Detection: ECL Basic Kit (RM00020). Exposure time: 60s.

Western Blotting

Image 2. Western blot analysis of extracts of various cell lines, using CRY1 antibody (ABIN6130203, ABIN6139061, ABIN6139064 and ABIN6217742) at 1:1000 dilution. Secondary antibody: HRP Goat Anti-Rabbit IgG (H+L) (ABIN1684268 and ABIN3020597) at 1:10000 dilution. Lysates/proteins: 25 µg per lane. Blocking buffer: 3 % nonfat dry milk in TBST. Detection: ECL Basic Kit (RM00020). Exposure time: 30s.