

Datasheet for ABIN6139091  
**anti-Exportin 2 antibody (AA 50-150)**[Go to Product page](#)

## 1 Image

## Overview

Quantity:	100 µL
Target:	Exportin 2 (CSE1L)
Binding Specificity:	AA 50-150
Reactivity:	Human
Host:	Rabbit
Clonality:	Polyclonal
Conjugate:	This Exportin 2 antibody is un-conjugated
Application:	Western Blotting (WB), Immunohistochemistry (IHC)

## Product Details

Immunogen:	A synthetic peptide corresponding to a sequence within amino acids 50-150 of human Exportin 2 (XPO2) (NP_001243064.1).
Sequence:	LEKSQDNVIK VCAVTFKNY IKRNWRIVED EPNKICEADR VAIKANIVHL MLSSPEQIQK QLSDAISIG REDFPQKWPD LLTEMVNRQ SGDFHIVINGV L
Isotype:	IgG
Cross-Reactivity:	Human, Rat
Characteristics:	Polyclonal Antibodies
Purification:	Affinity purification

## Target Details

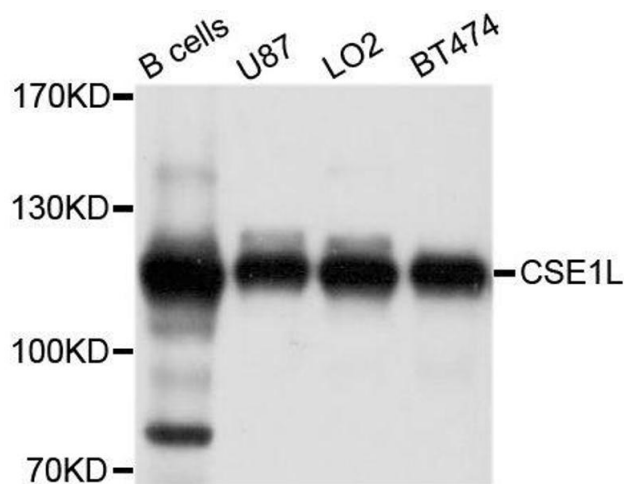
Target:	Exportin 2 (CSE1L)
Alternative Name:	CSE1L ( <a href="#">CSE1L Products</a> )
Background:	Proteins that carry a nuclear localization signal (NLS) are transported into the nucleus by the importin-alpha/beta heterodimer. Importin-alpha binds the NLS, while importin-beta mediates translocation through the nuclear pore complex. After translocation, RanGTP binds importin-beta and displaces importin-alpha. Importin-alpha must then be returned to the cytoplasm, leaving the NLS protein behind. The protein encoded by this gene binds strongly to NLS-free importin-alpha, and this binding is released in the cytoplasm by the combined action of RANBP1 and RANGAP1. In addition, the encoded protein may play a role both in apoptosis and in cell proliferation. Alternatively spliced transcript variants have been found for this gene.,CSE1L,CAS,CSE1,XPO2,Signal Transduction,Cell Biology & Developmental Biology,Apoptosis,CSE1L
Molecular Weight:	22 kDa/103 kDa/107 kDa/110 kDa
Gene ID:	1434
UniProt:	<a href="#">P55060</a>
Pathways:	<a href="#">Protein targeting to Nucleus</a>

## Application Details

Application Notes:	WB,1:500 - 1:2000,IHC,1:100 - 1:200
Comment:	HIGH QUALITY
Restrictions:	For Research Use only

## Handling

Format:	Liquid
Buffer:	PBS with 0.02 % sodium azide,50 % glycerol, pH 7.3.
Preservative:	Sodium azide
Precaution of Use:	This product contains Sodium azide: a POISONOUS AND HAZARDOUS SUBSTANCE which should be handled by trained staff only.
Storage:	-20 °C
Storage Comment:	Store at -20°C. Avoid freeze / thaw cycles.



Western Blotting

**Image 1.** Western blot analysis of extracts of various cell lines, using CSE1L antibody.