

Datasheet for ABIN6139100
anti-G-CSF antibody (AA 30-207)



[Go to Product page](#)

4 Images

Overview

Quantity:	100 µL
Target:	G-CSF (CSF3)
Binding Specificity:	AA 30-207
Reactivity:	Human
Host:	Rabbit
Clonality:	Polyclonal
Conjugate:	This G-CSF antibody is un-conjugated
Application:	Western Blotting (WB), Immunohistochemistry (IHC)

Product Details

Immunogen:	Recombinant fusion protein containing a sequence corresponding to amino acids 30-207 of human CSF3 (NP_000750.1).
Sequence:	ATPLGPASSL PQSFLKCLE QVRKIQGDGA ALQEKLVSEC ATYKLCHPEE LVLLGHSLGI PWAPLSSCPS QALQLAGCLS QLHSGFLYQ GLLQALEGIS PELGPTLDTL QLDVADFATT IWQQMEELGM APALQPTQGA MPAFASAFQR RAGGVLVASH LQSFLEVSYSR VLRHLAQP
Isotype:	IgG
Cross-Reactivity:	Human, Mouse, Rat
Characteristics:	Polyclonal Antibodies
Purification:	Affinity purification

Target Details

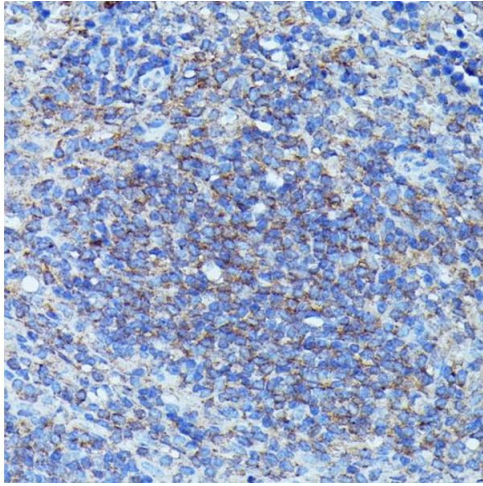
Target:	G-CSF (CSF3)
Alternative Name:	CSF3 (CSF3 Products)
Background:	The protein encoded by this gene is a cytokine that controls the production, differentiation, and function of granulocytes. The active protein is found extracellularly. Alternatively spliced transcript variants have been described for this gene.,CSF3,C17orf33,CSF3OS,GCSF,Cancer,Invasion and Metastasis,Cell Biology & Developmental Biology,Growth factor,Immunology & Inflammation,Cytokines,Cell Intrinsic Innate Immunity Signaling Pathway,Cardiovascular,Angiogenesis,Angiogenic growth factors,CSF3
Molecular Weight:	18 kDa/21 kDa/22 kDa
Gene ID:	1440
UniProt:	P09919
Pathways:	Cellular Response to Molecule of Bacterial Origin , Regulation of Actin Filament Polymerization

Application Details

Application Notes:	WB,1:500 - 1:1000,IHC,1:50 - 1:200
Restrictions:	For Research Use only

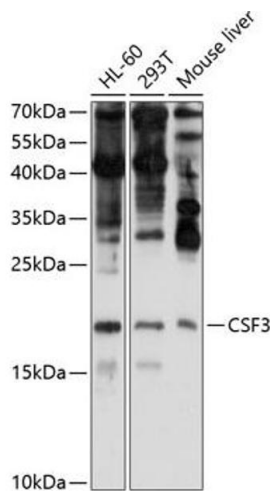
Handling

Format:	Liquid
Buffer:	PBS with 0.02 % sodium azide,50 % glycerol, pH 7.3.
Preservative:	Sodium azide
Precaution of Use:	This product contains Sodium azide: a POISONOUS AND HAZARDOUS SUBSTANCE which should be handled by trained staff only.
Storage:	-20 °C
Storage Comment:	Store at -20°C. Avoid freeze / thaw cycles.



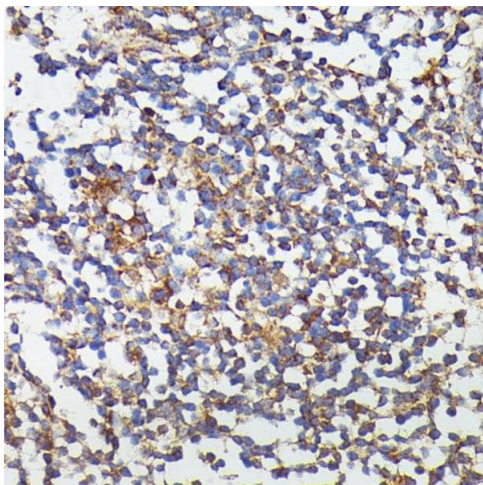
Immunohistochemistry

Image 1. Immunohistochemistry of paraffin-embedded mouse spleen using CSF3 antibody (ABIN6127710, ABIN6139100, ABIN6139101 and ABIN6221772) at dilution of 1:100 (40x lens). Perform microwave antigen retrieval with 10 mM PBS buffer pH 7.2 before commencing with IHC staining protocol.



Western Blotting

Image 2. Western blot analysis of extracts of various cell lines, using CSF3 antibody (ABIN6127710, ABIN6139100, ABIN6139101 and ABIN6221772) at 1:1000 dilution. Secondary antibody: HRP Goat Anti-Rabbit IgG (H+L) (ABIN1684268 and ABIN3020597) at 1:10000 dilution. Lysates/proteins: 25 µg per lane. Blocking buffer: 3 % nonfat dry milk in TBST. Detection: ECL Enhanced Kit (RM00021). Exposure time: 90s.



Immunohistochemistry

Image 3. Immunohistochemistry of paraffin-embedded human colon using CSF3 antibody (ABIN6127710, ABIN6139100, ABIN6139101 and ABIN6221772) at dilution of 1:100 (40x lens). Perform microwave antigen retrieval with 10 mM PBS buffer pH 7.2 before commencing with IHC staining protocol.

Please check the [product details page](#) for more images. Overall 4 images are available for ABIN6139100.